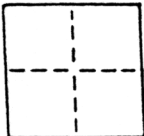


# CORNER RECORD

COUNTY OF SACRAMENTO T. 5 N. R. 4 E. M.D.B. & MERIDIAN CALIFORNIA  
 CORNER TYPE: GOVT. CORNER  MEANDER  RANCHO  CONTROL  OTHER   
 CORNER IDENTIFICATION — DATE OF VISIT \_\_\_\_\_ 19\_\_\_\_



WALNUT GROVE HOMEOWNERS & MERCHANTS SUB-LOTS 58

CORNER — LEFT AS FOUND  FOUND AND TAGGED  REESTABLISHED OBLITERATED CORNER  REBUILT

PHYSICAL DESCRIPTION OF CORNER FOUND; EVIDENCE AND METHOD USED TO IDENTIFY OR REESTABLISH

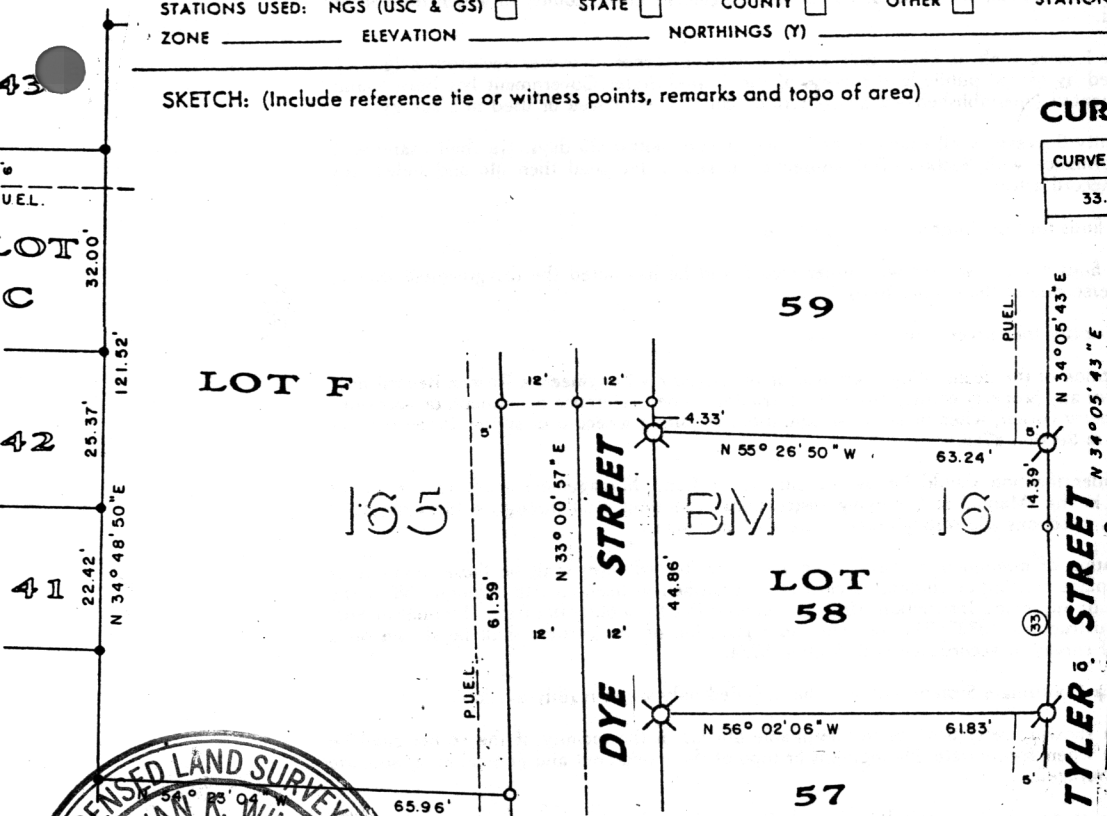
PHYSICAL DESCRIPTION OF MONUMENTS REBUILT OR PERPETUATED

CALIFORNIA COORDINATE SYSTEM ORDER: FIRST  SECOND  THIRD   
 STATIONS USED: NGS (USC & GS)  STATE  COUNTY  OTHER  STATION \_\_\_\_\_ STATION \_\_\_\_\_  
 ZONE \_\_\_\_\_ ELEVATION \_\_\_\_\_ NORTHINGS (Y) \_\_\_\_\_ EASTINGS (X) \_\_\_\_\_

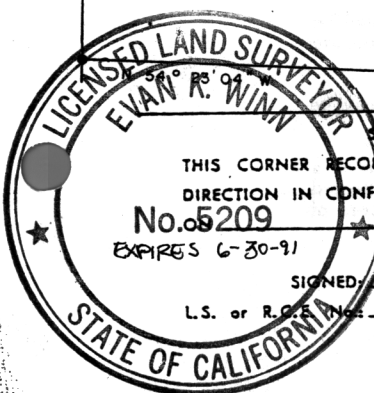
SKETCH: (Include reference tie or witness points, remarks and topo of area)

### CURVE DATA

CURVE NO.	RADIUS	CHORD BEARING	CHORD DISTANCE
33.	790.00'	N 35° 10' 36" E	29.82'



- LEGEND**
- SET 1/2"  $\phi$  IRON PIPE TAGGED L.S. 5209
  - SET NAIL & TAG IN CURB L.S. 5209
  - DIMENSION POINT
  - FD. NO. 4 REBAR TAGGED L.S. 4900



**SURVEYOR'S CERTIFICATE**

THIS CORNER RECORD WAS PREPARED BY ME OR UNDER MY DIRECTION IN CONFORMANCE WITH THE LAND SURVEYORS ACT  
 No. 5209  
 EXPIRES 6-30-91  
 SIGNED: [Signature]  
 L.S. or R.C. No. L.S. 5209

SEAL

**COUNTY SURVEYOR'S CERTIFICATE**

THE CORNER RECORD WAS RECEIVED APR 13, 1987  
 AND EXAMINED AND FILED APR 14, 1987  
 BY: [Signature]  
 TITLE: Surveying Engineering Tech  
 DOCUMENT No. 163  
 STATEMENT ON BACK OF SHEET

YES  NO