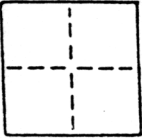


# CORNER RECORD

COUNTY OF SACRAMENTO T. 5 N. R. 4 E. M.D.B. & MERIDIAN CALIFORNIA  
 CORNER TYPE: GOVT. CORNER  MEANDER  RANCHO  CONTROL  OTHER   
 CORNER IDENTIFICATION — DATE OF VISIT \_\_\_\_\_ 19\_\_\_\_



*WALNUT GROVE HOMEOWNERS & MERCHANTS SUB - LOTS I, 55, 56, 57*

CORNER — LEFT AS FOUND  FOUND AND TAGGED  REESTABLISHED OBLITERATED CORNER  REBUILT

PHYSICAL DESCRIPTION OF CORNER FOUND; EVIDENCE AND METHOD USED TO IDENTIFY OR REESTABLISH

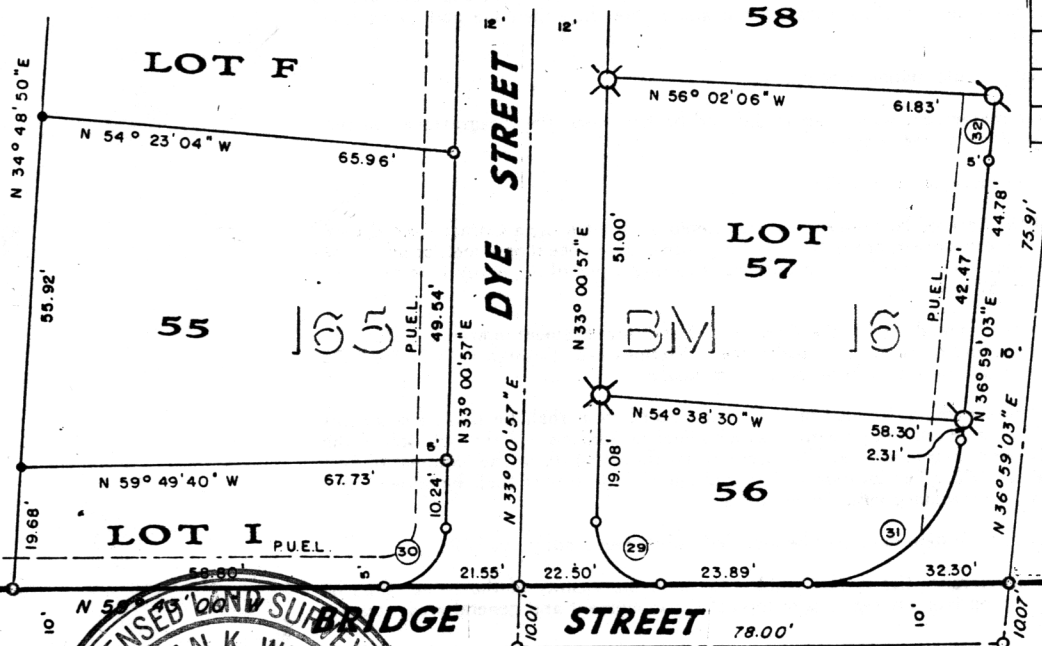
PHYSICAL DESCRIPTION OF MONUMENTS REBUILT OR PERPETUATED

CALIFORNIA COORDINATE SYSTEM ORDER: FIRST  SECOND  THIRD   
 STATIONS USED: NGS (USC & GS)  STATE  COUNTY  OTHER  STATION \_\_\_\_\_ STATION \_\_\_\_\_  
 ZONE \_\_\_\_\_ ELEVATION \_\_\_\_\_ NORTHINGS (Y) \_\_\_\_\_ EASTINGS (X) \_\_\_\_\_

SKETCH: (Include reference tie or witness points, remarks and topo of area)

### CURVE DATA

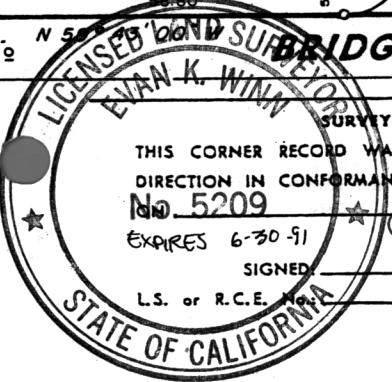
CURVE NO.	RADIUS	CHORD BEARING	CHORD DISTANCE
29.	10.00'	N 13° 21' 02" W	14.48'
30.	10.00'	N 76° 38' 58" E	13.80'
31.	25.00'	N 78° 38' 02" E	33.23'
32.	790.00'	N 36° 37' 17" E	10.01'



**TYLER STREET**

#### LEGEND

- SET 1/2"  $\phi$  IRON PIPE TAGGED L.S. 5209
- SET NAIL & TAG IN CURB L.S. 5209
- DIMENSION POINT
- FD. NO. 4 REBAR TAGGED L.S. 4900



#### SURVEYOR'S CERTIFICATE

THIS CORNER RECORD WAS PREPARED BY ME OR UNDER MY DIRECTION IN CONFORMANCE WITH THE LAND SURVEYORS ACT  
 No. 5209  
 EXPIRES 6-30-91  
 SIGNED: [Signature]  
 L.S. or R.C.E. L.S. 5209

SEAL

#### COUNTY SURVEYOR'S CERTIFICATE

THE CORNER RECORD WAS RECEIVED APR 13 1988  
 AND EXAMINED AND FILED APR 14 1988  
 BY: [Signature]  
 TITLE: Supervising Engineering Tech  
 DOCUMENT No. 162

STATEMENT ON BACK OF SHEET

YES  NO