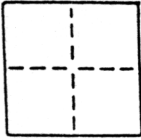


CORNER RECORD

COUNTY OF SACRAMENTO T. 5 N. R. 4 E. M.D.B. & MERIDIAN CALIFORNIA

CORNER TYPE: GOVT. CORNER MEANDER RANCHO CONTROL OTHER

CORNER IDENTIFICATION — DATE OF VISIT _____ 19____



WALNUT GROVE HOMEOWNERS & MERCHANTS SUB LOT I § 55

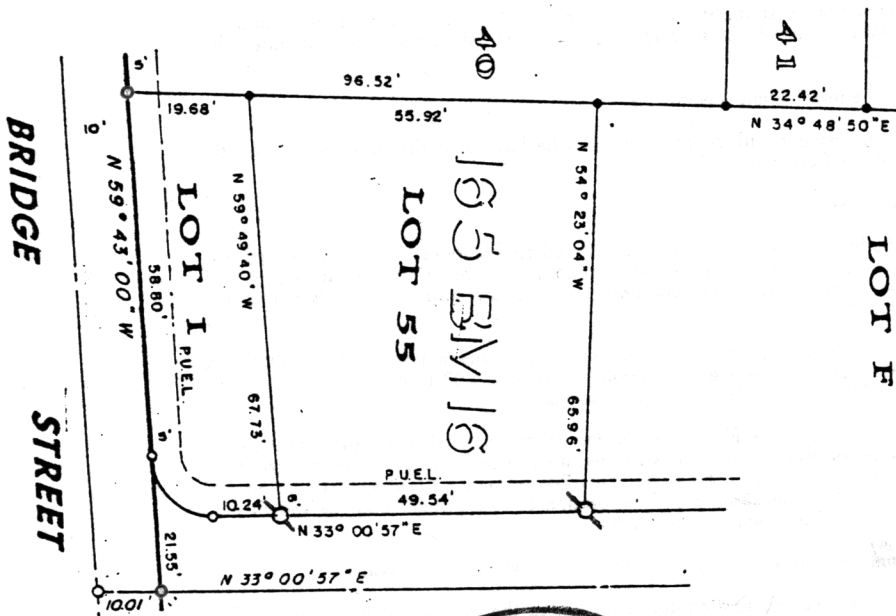
CORNER — LEFT AS FOUND FOUND AND TAGGED REESTABLISHED OBLITERATED CORNER REBUILT

PHYSICAL DESCRIPTION OF CORNER FOUND; EVIDENCE AND METHOD USED TO IDENTIFY OR REESTABLISH

PHYSICAL DESCRIPTION OF MONUMENTS REBUILT OR PERPETUATED

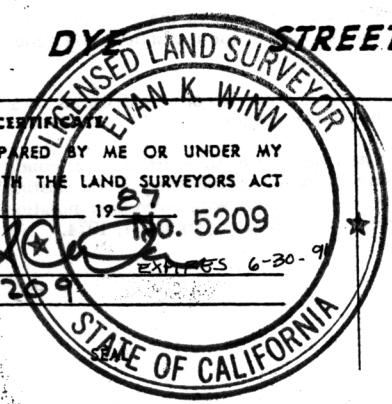
CALIFORNIA COORDINATE SYSTEM ORDER: FIRST SECOND THIRD
 STATIONS USED: NGS (USC & GS) STATE COUNTY OTHER STATION _____ STATION _____
 ZONE _____ ELEVATION _____ NORTHINGS (Y) _____ EASTINGS (X) _____

SKETCH: (Include reference tie or witness points, remarks and topo of area)



LEGEND

- SET NAIL & TAG IN CURB L.S. 5209
- DIMENSION POINT
- FD. NO. 4 REBAR TAGGED L.S. 4900



SURVEYOR'S CERTIFICATE
 THIS CORNER RECORD WAS PREPARED BY ME OR UNDER MY DIRECTION IN CONFORMANCE WITH THE LAND SURVEYORS ACT ON NOVEMBER 2 1987
 SIGNED: [Signature] L.S. 5209
 L.S. or R.C.E. No.: L.S. 5209

COUNTY SURVEYOR'S CERTIFICATE
 THE CORNER RECORD WAS RECEIVED APR 13 1988
 AND EXAMINED AND FILED APR 13 1988
 BY: D. PARKER
 TITLE: SUPERVISING ENGINEERING TECH

DOCUMENT No. 161

STATEMENT ON BACK OF SHEET

YES NO