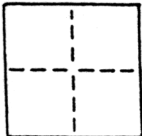


# CORNER RECORD

COUNTY OF SACRAMENTO T. 5 N. R. 4 E. M.D.B.& MERIDIAN CALIFORNIA  
 CORNER TYPE: GOVT. CORNER  MEANDER  RANCHO  CONTROL  OTHER   
 CORNER IDENTIFICATION — DATE OF VISIT \_\_\_\_\_ 19\_\_\_\_



*WALNUT GROVE HOMEOWNERS & MERCHANTS SUB. - LOTS 51, 52*

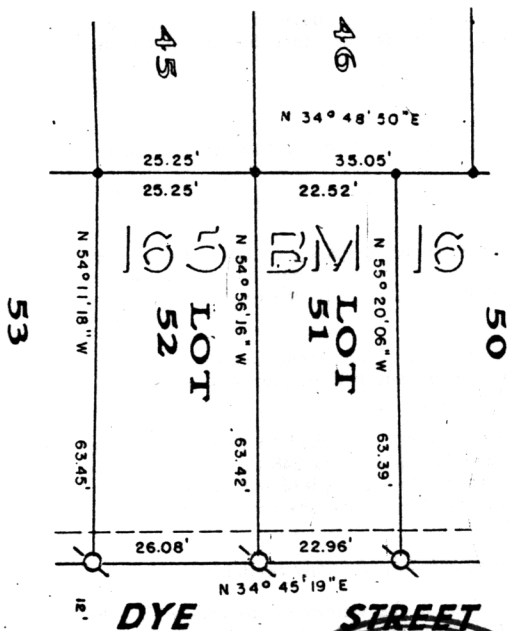
CORNER — LEFT AS FOUND  FOUND AND TAGGED  REESTABLISHED OBLITERATED CORNER  REBUILT

PHYSICAL DESCRIPTION OF CORNER FOUND; EVIDENCE AND METHOD USED TO IDENTIFY OR REESTABLISH

PHYSICAL DESCRIPTION OF MONUMENTS REBUILT OR PERPETUATED

CALIFORNIA COORDINATE SYSTEM ORDER: FIRST  SECOND  THIRD   
 STATIONS USED: NGS (USC & GS)  STATE  COUNTY  OTHER  STATION \_\_\_\_\_ STATION \_\_\_\_\_  
 ZONE \_\_\_\_\_ ELEVATION \_\_\_\_\_ NORTHINGS (Y) \_\_\_\_\_ EASTINGS (X) \_\_\_\_\_

SKETCH: (Include reference tie or witness points, remarks and topo of area)



### LEGEND

- SET NAIL & TAG IN CURB L.S. 5209
- DIMENSION POINT
- FD. NO. 4 REBAR TAGGED L.S. 4900

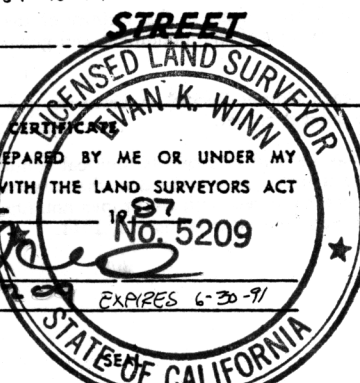
### SURVEYOR'S CERTIFICATE

THIS CORNER RECORD WAS PREPARED BY ME OR UNDER MY DIRECTION IN CONFORMANCE WITH THE LAND SURVEYORS ACT ON NOVEMBER 1987

SIGNED: *[Signature]*

L.S. or R.C.E. No.: L.S. 5209

EXPIRES 6-30-91



### COUNTY SURVEYOR'S CERTIFICATE

THE CORNER RECORD WAS RECEIVED APR 13 1988 AND EXAMINED AND FILED APR 13 1988

BY: D. PARKER

TITLE: SUPERVISING ENGINEERING TECH

DOCUMENT No. 158

STATEMENT ON BACK OF SHEET

YES  NO