

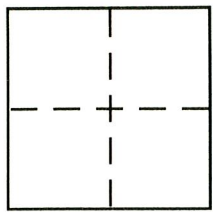
CORNER RECORD

Document Number 1579

City of Walnut Grove

County of Sacramento, California

Brief Legal Description Lot 10, Delta Estates Homeowners Association



CORNER TYPE

Government Corner Control
Meander Property
Rancho Other
Date of Survey 9-11-2007

COORDINATES (Optional)

N. _____
E. _____
Zone _____ NAD27 NAD83
NAD83 Epoch _____
Elev. _____
Vert. Datum: NGVD29 NAVD88
Meas. Units: Metric Imperial

Corner - Left as found Found and tagged Established Reestablished Rebuilt

Identification and type of corner found: Evidence used to identify or procedure used to establish or reestablish the corner:
Found existing street monuments as shown on recorded subdivision map recorded in Book 251 of Maps, Map No. 10

A description of the physical condition of the monument as found and as set or reset:
Set 5/8" rebar with plastic cap stamped LS5030 on all four property corners of Lot 10

SURVEYOR'S STATEMENT

This Corner Record was prepared by me or under my direction in conformance with the Land Surveyor's Act on September 12, 2007
Signed Richard A. Varney P.L.S. or R.C.E. No. LS5030



COUNTY SURVEYOR'S STATEMENT

This Corner Record was received 9/17/2007
and examined and filed 9/19/2007
Signed [Signature] P.L.S. or R.C.E. No. 7965
Title ASSOC. LAND SURVEYOR



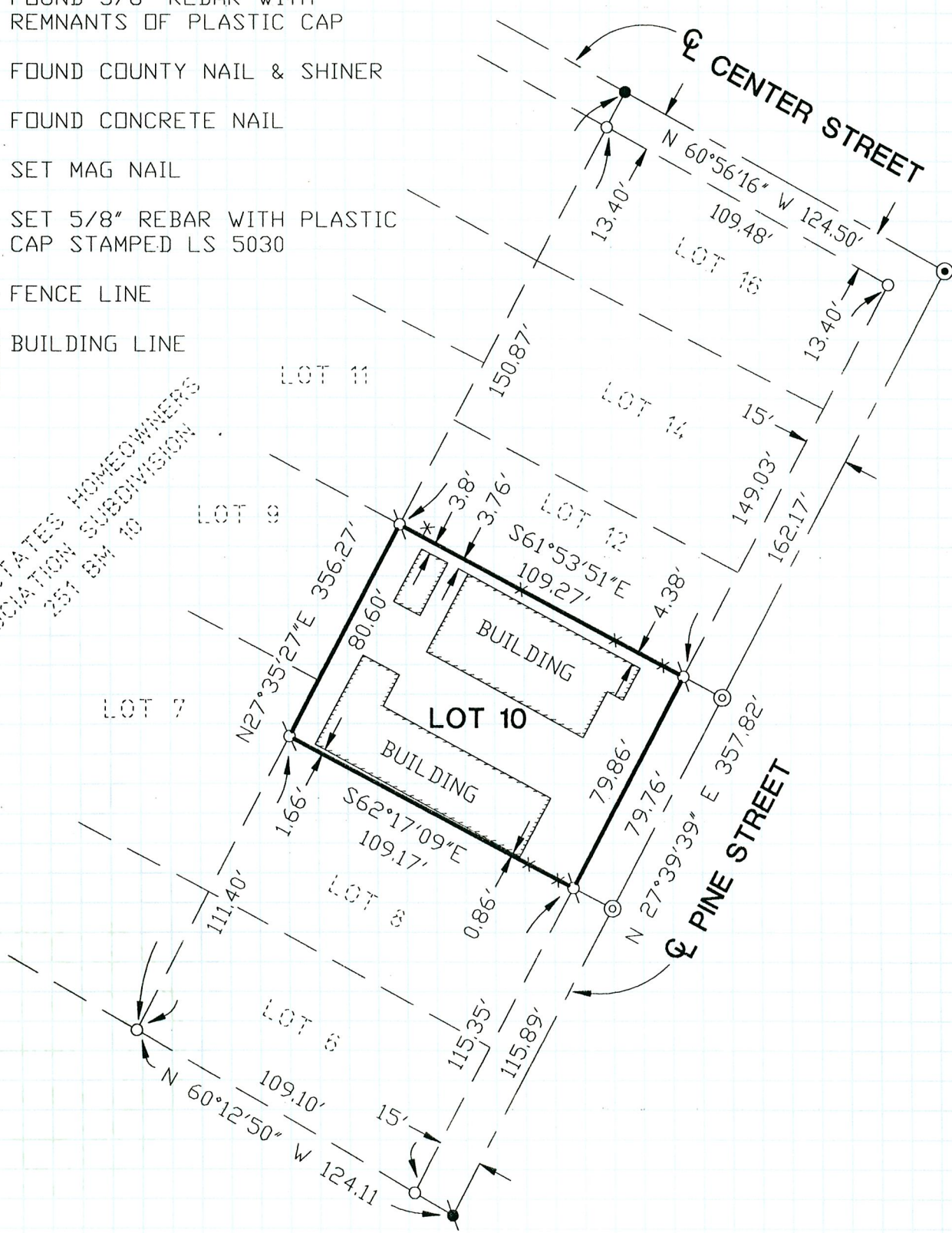
County Surveyor's Comment _____

LEGEND

- DIMENSION POINT ONLY
- FOUND 5/8" REBAR WITH REMNANTS OF PLASTIC CAP
- ⊙ FOUND COUNTY NAIL & SHINER
- FOUND CONCRETE NAIL
- ⊙ SET MAG NAIL
- ⊗ SET 5/8" REBAR WITH PLASTIC CAP STAMPED LS 5030
- * * FENCE LINE
- ┌ BUILDING LINE

DELTA ESTATES HOMEOWNERS
ASSOCIATION SUBDIVISION
257 BM 10

SCALE 1"=50'



W.D. 070906