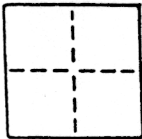


CORNER RECORD

COUNTY OF SACRAMENTO T. 5 N. R. 4 E. M.D.B.& MERIDIAN CALIFORNIA

CORNER TYPE: GOVT. CORNER MEANDER RANCHO CONTROL OTHER

CORNER IDENTIFICATION — DATE OF VISIT _____ 19____



WALNUT GROVE HOMEOWNERS & MERCHANTS SUB-LOTS E, 49, 50

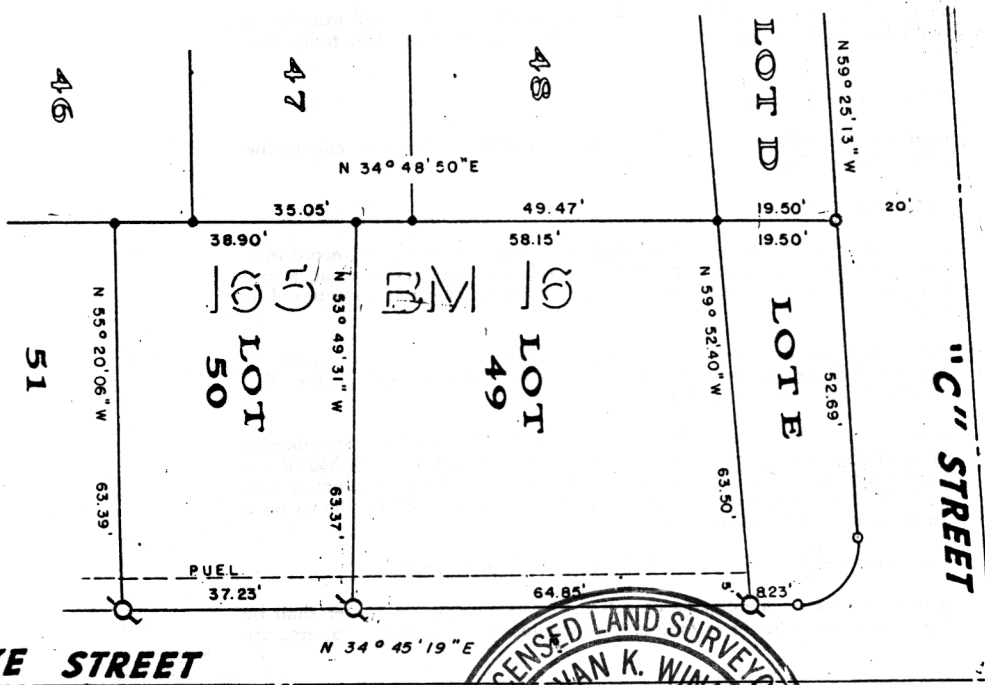
CORNER — LEFT AS FOUND FOUND AND TAGGED REESTABLISHED OBLITERATED CORNER REBUILT

PHYSICAL DESCRIPTION OF CORNER FOUND; EVIDENCE AND METHOD USED TO IDENTIFY OR REESTABLISH

PHYSICAL DESCRIPTION OF MONUMENTS REBUILT OR PERPETUATED

CALIFORNIA COORDINATE SYSTEM ORDER: FIRST SECOND THIRD
 STATIONS USED: NGS (USC & GS) STATE COUNTY OTHER STATION _____ STATION _____
 ZONE _____ ELEVATION _____ NORTHINGS (Y) _____ EASTINGS (X) _____

SKETCH: (Include reference tie or witness points, remarks and topo of area)



LEGEND

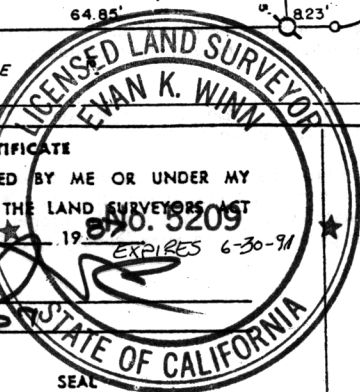
- SET NAIL & TAG IN CURB L.S. 5209
- DIMENSION POINT
- FD. NO. 4 REBAR TAGGED L.S. 4900

SURVEYOR'S CERTIFICATE

THIS CORNER RECORD WAS PREPARED BY ME OR UNDER MY DIRECTION IN CONFORMANCE WITH THE LAND SURVEYORS ACT ON NOVEMBER 2 1988 **NO. 3209** EXPIRES 6-30-91

SIGNED: _____

L.S. or R.C.E. No.: L.S. 5209



COUNTY SURVEYOR'S CERTIFICATE

THE CORNER RECORD WAS RECEIVED APR. 13, 1988 AND EXAMINED AND FILED APR 13, 1988 BY: D. PARKER TITLE: SUPERVISING ENGINEERING TECH

DOCUMENT No. 157

STATEMENT ON BACK OF SHEET

YES NO