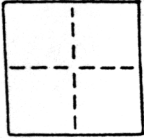


CORNER RECORD

COUNTY OF SACRAMENTO T. 5 N. R. 4 E. M.D.B.& MERIDIAN CALIFORNIA
 CORNER TYPE: GOVT. CORNER MEANDER RANCHO CONTROL OTHER
 CORNER IDENTIFICATION — DATE OF VISIT _____ 19____



WALNUT GROVE HOMEOWNERS & MERCHANTS SUB - LOTS 45, 46

CORNER — LEFT AS FOUND FOUND AND TAGGED REESTABLISHED OBLITERATED CORNER REBUILT

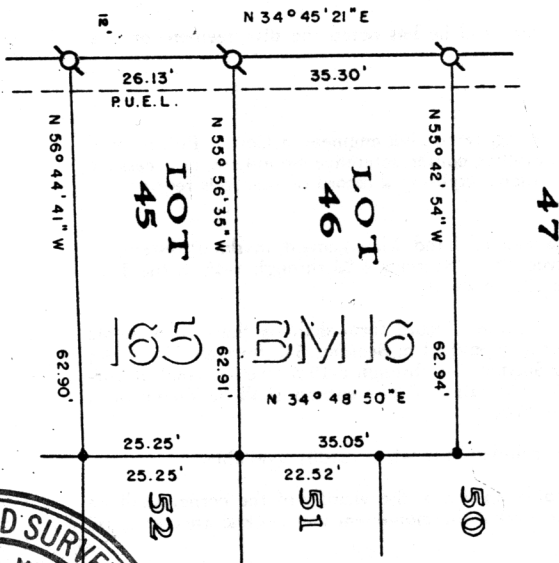
PHYSICAL DESCRIPTION OF CORNER FOUND; EVIDENCE AND METHOD USED TO IDENTIFY OR REESTABLISH

PHYSICAL DESCRIPTION OF MONUMENTS REBUILT OR PERPETUATED

CALIFORNIA COORDINATE SYSTEM ORDER: FIRST SECOND THIRD
 STATIONS USED: NGS (USC & GS) STATE COUNTY OTHER STATION _____ STATION _____
 ZONE _____ ELEVATION _____ NORTHINGS (Y) _____ EASTINGS (X) _____

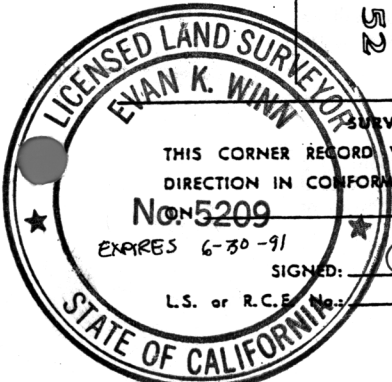
SKETCH: (Include reference tie or witness points, remarks and topo of area)

MARKET STREET



LEGEND

- SET NAIL & TAG IN CURB GUTTER L.S. 5209
- DIMENSION POINT
- FD. NO. 4 REBAR TAGGED L.S. 4900



SURVEYOR'S CERTIFICATE
 THIS CORNER RECORD WAS PREPARED BY ME OR UNDER MY DIRECTION IN CONFORMANCE WITH THE LAND SURVEYORS ACT
 No. 5209
 EXPIRES 6-30-91
 SIGNED: [Signature] 1987
 L.S. or R.C.E. No. L.S. 5209

COUNTY SURVEYOR'S CERTIFICATE
 THE CORNER RECORD WAS RECEIVED APR 13 1988
 AND EXAMINED AND FILED APR 14 1988
 BY: D. PARKER
 TITLE: SUPERVISING ENGINEERING TECH
 DOCUMENT No. 156
 STATEMENT ON BACK OF SHEET YES NO

SEAL