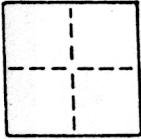


# CORNER RECORD

COUNTY OF SACRAMENTO T. 5N R. 4E M.D.B & MERIDIAN CALIFORNIA  
 CORNER TYPE: GOVT. CORNER  MEANDER  RANCHO  CONTROL  OTHER   
 CORNER IDENTIFICATION — DATE OF VISIT \_\_\_\_\_ 19\_\_\_\_



*WALNUT GROVE HOMEOWNERS & MERCHANTS SUB LOTS 28, 29, 30*

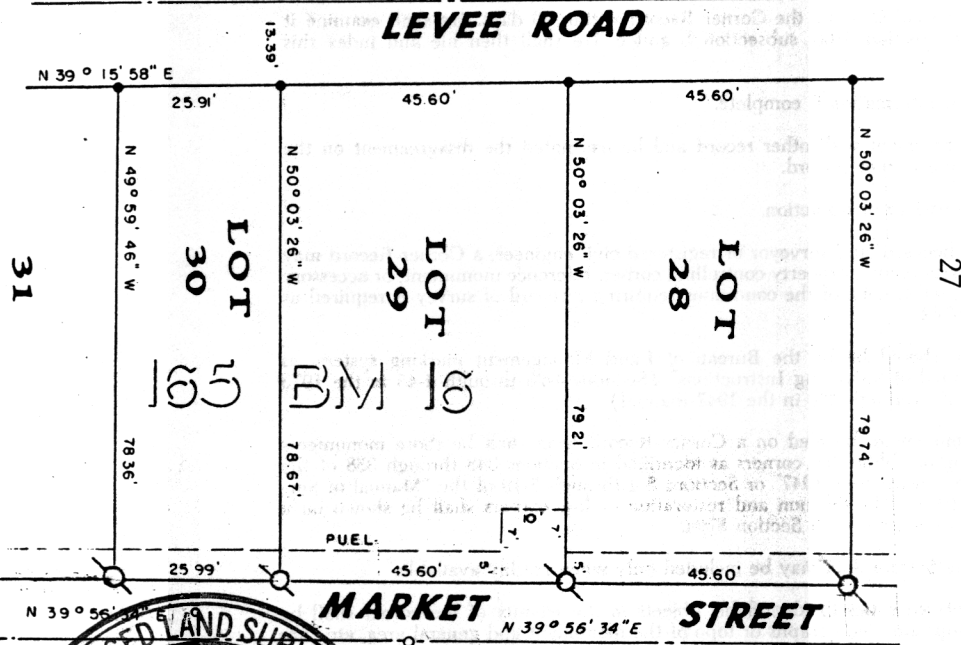
CORNER — LEFT AS FOUND  FOUND AND TAGGED  REESTABLISHED OBLITERATED CORNER  REBUILT

PHYSICAL DESCRIPTION OF CORNER FOUND; EVIDENCE AND METHOD USED TO IDENTIFY OR REESTABLISH

PHYSICAL DESCRIPTION OF MONUMENTS REBUILT OR PERPETUATED

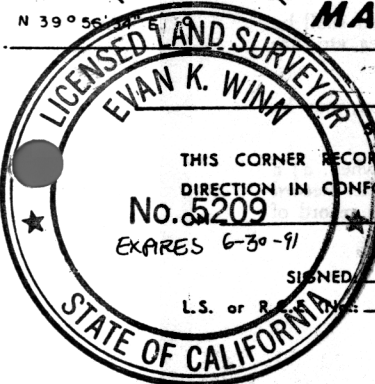
CALIFORNIA COORDINATE SYSTEM ORDER: FIRST  SECOND  THIRD   
 STATIONS USED: NGS (USC & GS)  STATE  COUNTY  OTHER  STATION \_\_\_\_\_ STATION \_\_\_\_\_  
 ZONE \_\_\_\_\_ ELEVATION \_\_\_\_\_ NORTHINGS (Y) \_\_\_\_\_ EASTINGS (X) \_\_\_\_\_

SKETCH: (Include reference tie or witness points, remarks and topo of area)



**LEGEND**

- SET NAIL & TAG IN SIDEWALK L.S. 5209
- DIMENSION POINT
- FD. NO.4 REBAR TAGGED L.S. 4900



**SURVEYOR'S CERTIFICATE**  
 THIS CORNER RECORD WAS PREPARED BY ME OR UNDER MY DIRECTION IN CONFORMANCE WITH THE LAND SURVEYORS ACT  
 No. 5209  
 EXPIRES 6-30-91  
 SIGNED: [Signature] 1987  
 L.S. or R.S. No. L.S. 5209

**COUNTY SURVEYOR'S CERTIFICATE**  
 THE CORNER RECORD WAS RECEIVED APR 13 1988  
 AND EXAMINED AND FILED APR 14 1988  
 BY: D. PARKER  
 TITLE: SUPERVISING ENGINEERING TECH

DOCUMENT No. 154  
 STATEMENT ON BACK OF SHEET YES  NO