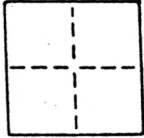


# CORNER RECORD

COUNTY OF SACRAMENTO T. 5N R. 4E M.D.B & MERIDIAN CALIFORNIA  
 CORNER TYPE: GOVT. CORNER  MEANDER  RANCHO  CONTROL  OTHER   
 CORNER IDENTIFICATION — DATE OF VISIT \_\_\_\_\_ 19\_\_\_\_



*WALNUT GROVE HOMEOWNERS & MERCHANTS SUB- LOTS 8, 9*

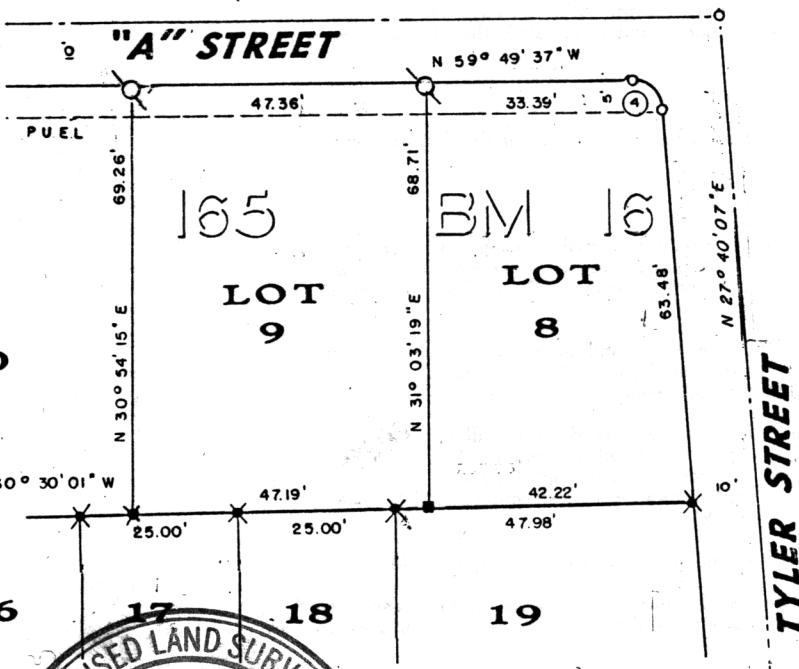
CORNER — LEFT AS FOUND  FOUND AND TAGGED  REESTABLISHED OBLITERATED CORNER  REBUILT

PHYSICAL DESCRIPTION OF CORNER FOUND; EVIDENCE AND METHOD USED TO IDENTIFY OR REESTABLISH

PHYSICAL DESCRIPTION OF MONUMENTS REBUILT OR PERPETUATED

CALIFORNIA COORDINATE SYSTEM ORDER: FIRST  SECOND  THIRD   
 STATIONS USED: NGS (USC & GS)  STATE  COUNTY  OTHER  STATION \_\_\_\_\_ STATION \_\_\_\_\_  
 ZONE \_\_\_\_\_ ELEVATION \_\_\_\_\_ NORTHINGS (Y) \_\_\_\_\_ EASTINGS (X) \_\_\_\_\_

SKETCH: (Include reference tie or witness points, remarks and topo of area)



### CURVE DATA

CURVE NO.	RADIUS	CHORD BEARING	CHORD DISTANCE
4.	5.00'	N 16° 04' 45\" W	6.92'

### LEGEND

- FD. CUT 'X' IN CONCRETE
- ✱ FD. CONCRETE NAIL AND TAG L.S. 4900
- ⊙ SET NAIL & TAG IN CURB L.S. 5209
- DIMENSION POINT
- FD. NO.4 REBAR TAGGED L.S. 4900



#### SURVEYOR'S CERTIFICATE

THIS CORNER RECORD WAS PREPARED BY ME OR UNDER MY DIRECTION IN CONFORMANCE WITH THE LAND SURVEYORS ACT

NO. 5209

EXPIRES 6-30-91

SIGNED: \_\_\_\_\_

L.S. or R.C.E. No. L.S. 5209

SEAL

#### COUNTY SURVEYOR'S CERTIFICATE

THE CORNER RECORD WAS RECEIVED APR 13, 1988 AND EXAMINED AND FILED APR 14, 1988

BY: \_\_\_\_\_

TITLE: Surveying Engineering Tech

DOCUMENT No. 153

STATEMENT ON BACK OF SHEET

YES  NO