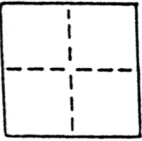


CORNER RECORD

COUNTY OF SACRAMENTO T. 5 N. R. 4 E. M.D.B.& MERIDIAN CALIFORNIA
 CORNER TYPE: GOVT. CORNER MEANDER RANCHO CONTROL OTHER
 CORNER IDENTIFICATION — DATE OF VISIT _____ 19____



WALNUT GROVE HOMEOWNERS & MERCHANTS SUB, LOT F

CORNER — LEFT AS FOUND FOUND AND TAGGED REESTABLISHED OBLITERATED CORNER REBUILT

PHYSICAL DESCRIPTION OF CORNER FOUND; EVIDENCE AND METHOD USED TO IDENTIFY OR REESTABLISH

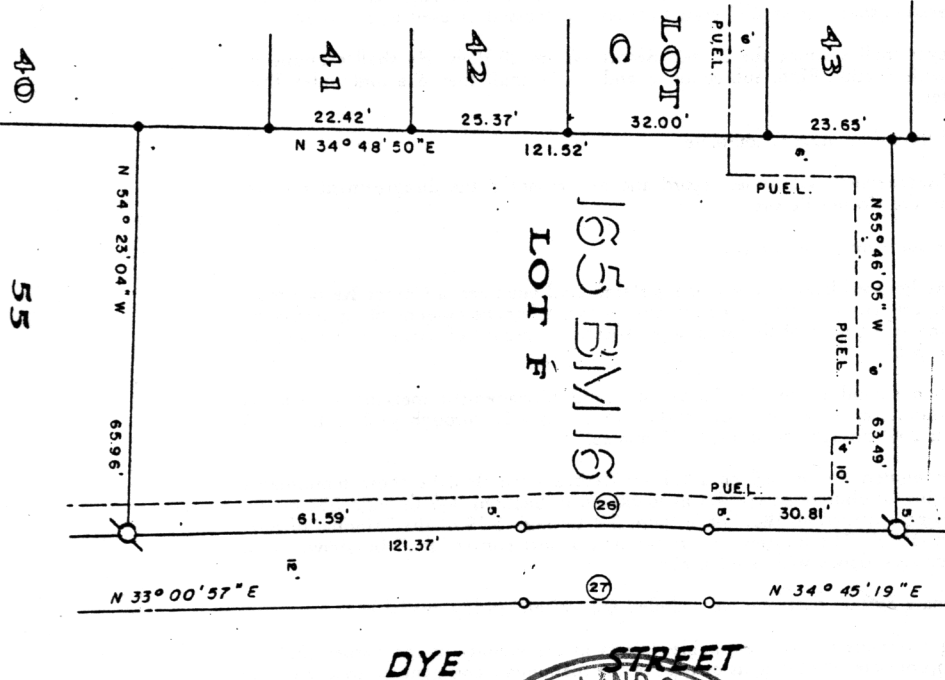
PHYSICAL DESCRIPTION OF MONUMENTS REBUILT OR PERPETUATED

CALIFORNIA COORDINATE SYSTEM ORDER: FIRST SECOND THIRD
 STATIONS USED: NGS (USC & GS) STATE COUNTY OTHER STATION _____ STATION _____
 ZONE _____ ELEVATION _____ NORTHINGS (Y) _____ EASTINGS (X) _____

SKETCH: (Include reference tie or witness points, remarks and topo of area)

CURVE DATA

CURVE NO.	RADIUS	CHORD BEARING	CHORD DISTANCE
26.	1012.00'	N 33° 53' 08" E	30.72'
27.	1000.00'	N 33° 52' 08" E	30.36'



54

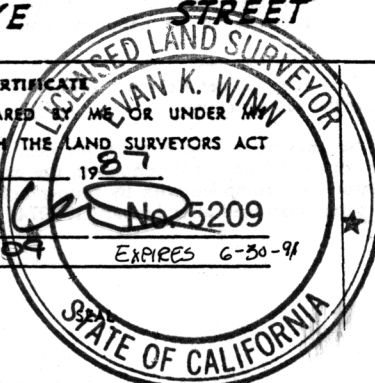
LEGEND

- SET NAIL & TAG IN CURB L.S. 5209
- DIMENSION POINT
- FD. NO. 4 REBAR TAGGED L.S. 4900

SURVEYOR'S CERTIFICATE

THIS CORNER RECORD WAS PREPARED BY ME OR UNDER MY DIRECTION IN CONFORMANCE WITH THE LAND SURVEYORS ACT ON NOVEMBER 2 1988

SIGNED: [Signature] No. 5209
 L.S. or R.C.E. No.: L.S. 5209 EXPIRES 6-30-91



COUNTY SURVEYOR'S CERTIFICATE

THE CORNER RECORD WAS RECEIVED APR 13, 1988 AND EXAMINED AND FILED APR 13, 1988 BY: D. PARKER
 TITLE: SUPERVISING ENGINEERING TECH

DOCUMENT No. 152

STATEMENT ON BACK OF SHEET

YES NO