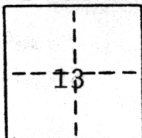


CORNER RECORD

COUNTY OF Sacramento T. XX R. XX Rancho Del Paso MERIDIAN CALIFORNIA

CORNER TYPE: GOV'T. CORNER MEANDER RANCHO CONTROL OTHER Property Corner
 CORNER IDENTIFICATION - DATE OF VISIT March 24, 19 88



NORTH SACRAMENTO SUBD. No. 8

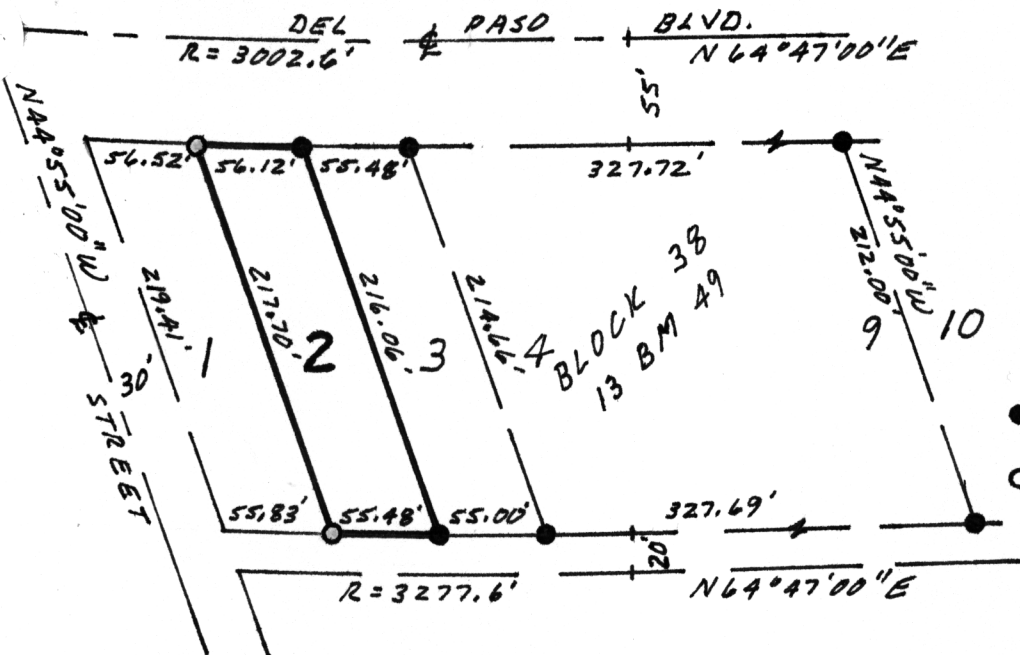
CORNER - LEFT AS FOUND FOUND AND TAGGED REESTABLISHED OBLITERATED CORNER REBUILT

PHYSICAL DESCRIPTION OF CORNER FOUND: EVIDENCE AND METHOD USED TO IDENTIFY OR REESTABLISH
 Found 1 1/2" I.P. Tagged L.S. 2457, no record, at the corners common to lots 2-3, 3-4 and 9-10 of Block 38, 13 B.M. 49.

PHYSICAL DESCRIPTION OF MONUMENTS REBUILT OR PERPETUATED
 Set 3/4" rebar tagged L.S. 3563 at the Northwest and Southwest corners of Lot 2, Block 38, 13 B.M. 49.

CALIFORNIA COORDINATE SYSTEM ORDER: FIRST SECOND THIRD
 STATIONS USED: NGS (USC & GS) STATE COUNTY OTHER STATION _____ STATION _____
 ZONE _____ ELEVATION _____ NORTHINGS (Y) _____ EASTINGS (X) _____

SKETCH: (Include reference tie or witness points, remarks and topo of area)



LEGEND
 ● FOUND 1 1/4" IP TAGGED L.S. 2457
 ○ SET 3/4" REBAR TAGGED L.S. 3563

#870112

SURVEYOR'S CERTIFICATE

THIS CORNER RECORD WAS PREPARED BY ME OR UNDER MY DIRECTION IN CONFORMANCE WITH THE LAND SURVEYORS ACT
 March 24, 19 88

SIGNED: Lloyd C. Parker
 L.S. No.: L.S. 3563

SEAL

COUNTY SURVEYOR'S CERTIFICATE

THIS CORNER RECORD WAS RECEIVED MARCH 25, 19 88
 AND EXAMINED AND FILED MARCH 25, 19 88

BY: D. PARKER
 TITLE: SUPERVISING ENGR. TECH

DOCUMENT No. 151
 STATEMENT ON BACK OF SHEET

YES NO

