

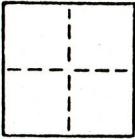
**CORNER RECORD**

015

COUNTY OF Sacramento T. 4 North R. 3 East Mt. Diablo MERIDIAN CALIFORNIA

CORNER TYPE: GOVT. CORNER  MEANDER  RANCHO  CONTROL  OTHER

CORNER IDENTIFICATION — DATE OF VISIT September 29 1984  
November 9 1984



CORNER — LEFT AS FOUND  FOUND AND TAGGED  REESTABLISHED OBLITERATED CORNER  REBUILT

PHYSICAL DESCRIPTION OF CORNER FOUND; EVIDENCE AND METHOD USED TO IDENTIFY OR REESTABLISH

S.E. CORNER FRANCIS STEPHENSON PROPERTY

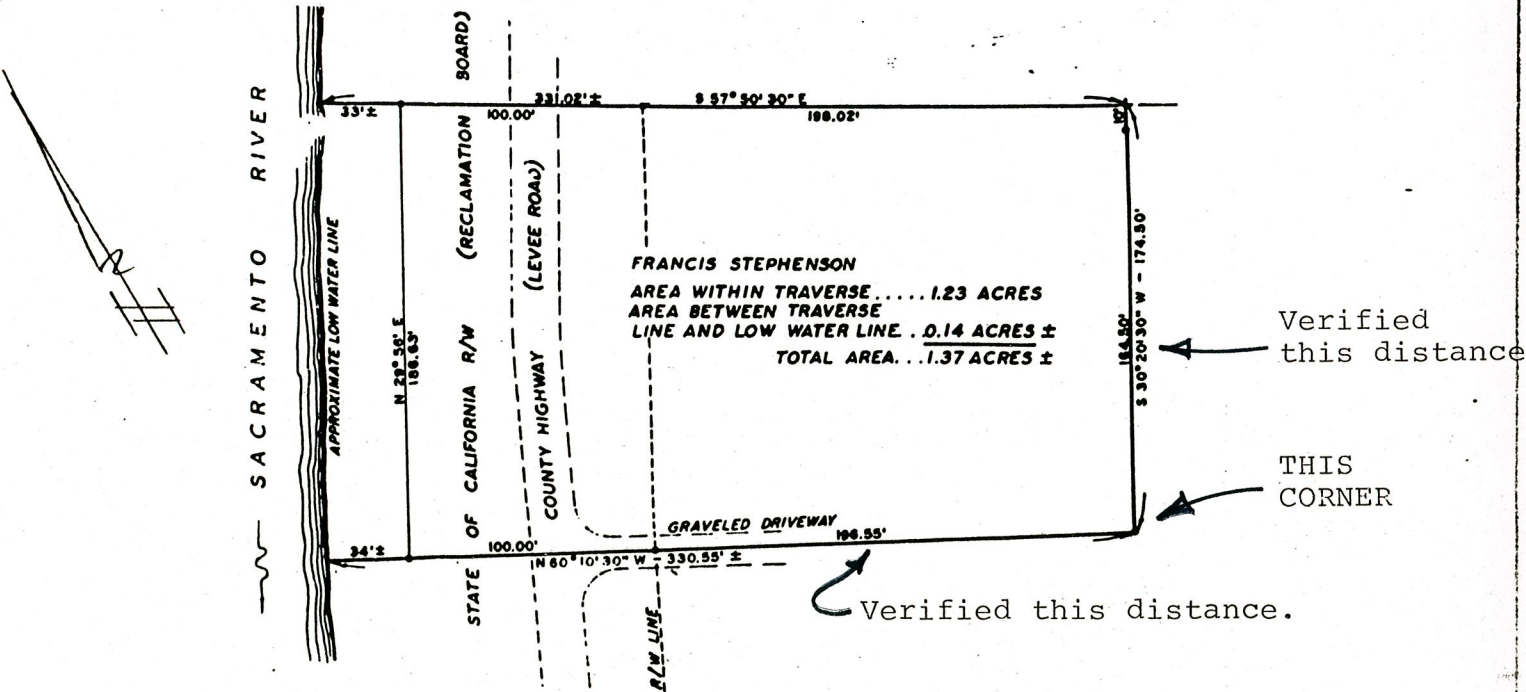
Shown on Survey filed in VOL. 10 of SURVEYS, MAP No. 34

An iron pipe set in concrete (top battered when driven - dia. uncertain)  
Fnd. tag R.E. 287 nearby. Wired same & wired tag L.S. 2457 to monument.

PHYSICAL DESCRIPTION OF MONUMENTS REBUILT OR PERPETUATED

CALIFORNIA COORDINATE SYSTEM ORDER: FIRST  SECOND  THIRD   
STATIONS USED: NGS (USC & GS)  STATE  COUNTY  OTHER  STATION \_\_\_\_\_ STATION \_\_\_\_\_  
ZONE \_\_\_\_\_ ELEVATION \_\_\_\_\_ NORTHINGS (Y) \_\_\_\_\_ EASTINGS (X) \_\_\_\_\_

SKETCH: (Include reference tie or witness points, remarks and topo of area)



**SURVEYOR'S CERTIFICATE**

THIS CORNER RECORD WAS PREPARED BY ME OR UNDER MY DIRECTION IN CONFORMANCE WITH THE LAND SURVEYORS ACT ON December 6, 1984

SIGNED: Jonathan S. Mann

L.S. or R.C.E. No.: L.S. 2457

SEAL

**COUNTY SURVEYOR'S CERTIFICATE**

THE CORNER RECORD WAS RECEIVED \_\_\_\_\_ 19\_\_\_\_\_  
AND EXAMINED AND FILED \_\_\_\_\_ 19\_\_\_\_\_  
BY: \_\_\_\_\_  
TITLE: \_\_\_\_\_

DOCUMENT No. 15

STATEMENT ON BACK OF SHEET

YES  NO