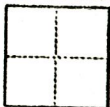


CORNER RECORD

149

COUNTY OF Sacramento T. _____ R. _____ MERIDIAN _____ CALIFORNIA

CORNER TYPE: GOVT. CORNER MEANDER RANCHO CONTROL OTHER
CORNER IDENTIFICATION - DATE OF VISIT _____ 19____



35 PM 22

CORNER - LEFT AS FOUND FOUND AND TAGGED REESTABLISHED OBLITERATED CORNER REBUILT

PHYSICAL DESCRIPTION OF CORNER FOUND, EVIDENCE AND METHOD USED TO IDENTIFY OR REESTABLISH

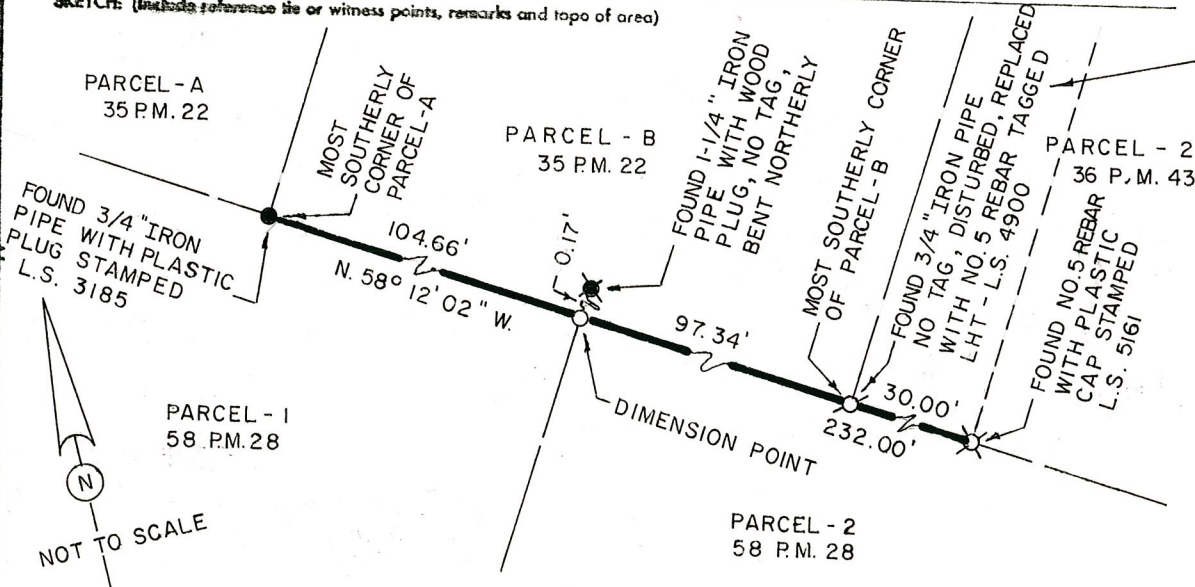
PHYSICAL DESCRIPTION OF MONUMENTS RESULT OR PERPETUATED

set No. 5 rebar at most southerly corner of Parcel B, 35 P.M. 22

CALIFORNIA COORDINATE SYSTEM ORDER: FIRST SECOND THIRD
STATIONS USED: NGS (NSC & GS) STATE COUNTY OTHER STATION _____ STATION _____
ZONE _____ ELEVATION _____ NORTHINGS (Y) _____ EASTINGS (X) _____

(Fold)

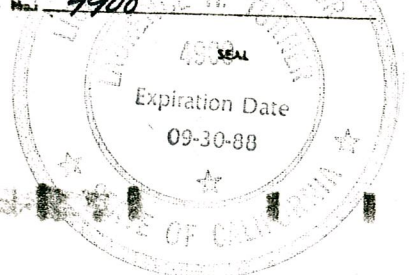
SKETCH: (Include reference to or witness points, remarks and topo of area)



CERTIFICATE OF COMPLIANCE
790403 O.R. 865

SURVEYOR'S CERTIFICATE
THIS CORNER RECORD WAS PREPARED BY ME OR UNDER MY DIRECTION IN CONFORMANCE WITH THE LAND SURVEYORS ACT ON 2-18 1988
SIGNED: Laurence Turner
L.S. or A.S. No. 4900

COUNTY SURVEYOR'S CERTIFICATE
THE CORNER RECORD WAS RECEIVED FEB 22 1988 AND EXAMINED AND FILED FEB 22 19 88
BY: D PARKER
TITLE: SUPERVISING ENG TECH
DOCUMENT NO. 149



STATEMENT ON BACK OF SHEET YES NO