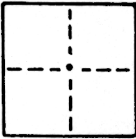


CORNER RECORD

COUNTY OF Sacramento T. 8 N. R. 5 E. M.D. _____ MERIDIAN CALIFORNIA

CORNER TYPE: GOVT. CORNER MEANDER RANCHO CONTROL OTHER

CORNER IDENTIFICATION — DATE OF VISIT _____ 19____



Set all corners of Lot 721, Plat of Wright & Kimbrough Subdivision No. 20

CORNER — LEFT AS FOUND FOUND AND TAGGED REESTABLISHED OBLITERATED CORNER REBUILT

PHYSICAL DESCRIPTION OF CORNER FOUND; EVIDENCE AND METHOD USED TO IDENTIFY OR REESTABLISH

Corners established per Official Plat of Wright & Kimbrough Subdivision No. 20 and street improvements.

PHYSICAL DESCRIPTION OF MONUMENTS REBUILT OR PERPETUATED

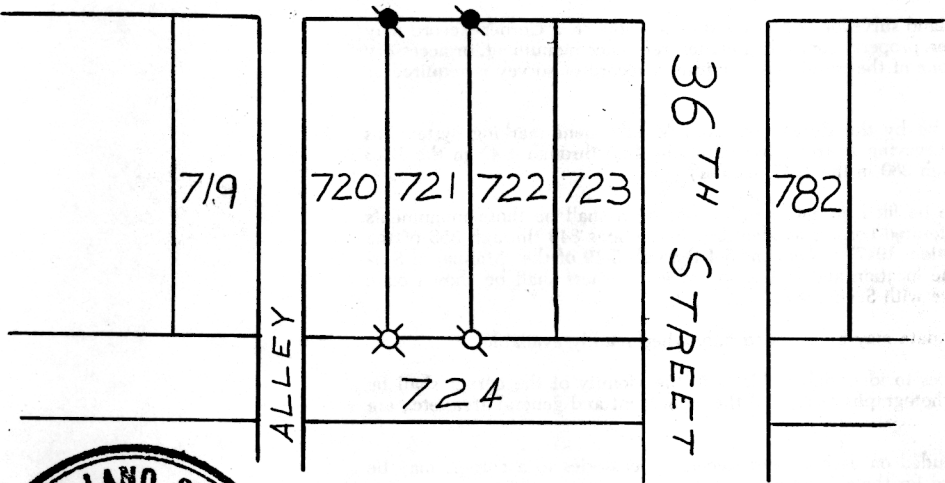
(See sketch below)

CALIFORNIA COORDINATE SYSTEM ORDER: FIRST SECOND THIRD
 STATIONS USED: NGS (USC & GS) STATE COUNTY OTHER STATION _____ STATION _____
 ZONE _____ ELEVATION _____ NORTHINGS (Y) _____ EASTINGS (X) _____

SKETCH: (Include reference tie or witness points, remarks and topo of area)

WRIGHT + KIMBROUGH SUBDIVISION No. 20

FOLSOM BLVD



LEGEND:
 ⊗: DRILL SET LEAD PLUG + TAGGED "LS 2457"
 ⊗: DENOTES 1/4" O.D. IRON PIPE SET + TAGGED "LS 2457"
 ⊗: DENOTES TAG SET IN FENCE POST "LS 2457"



SURVEYOR'S CERTIFICATE

CORNER RECORD WAS PREPARED BY ME OR UNDER MY SUPERVISION IN CONFORMANCE WITH THE LAND SURVEYORS ACT
 January 20 1988

SIGNED: Timothy S. Train
 or R.C.E. No.: LS #2457

COUNTY SURVEYOR'S CERTIFICATE

THE CORNER RECORD WAS RECEIVED Jan 28 1988
 AND EXAMINED AND FILED Feb 1 1988

BY: D. PARKER
 TITLE: SURVEYING ENG TECH

DOCUMENT No. 148

STATEMENT ON BACK OF SHEET

YES NO

SEAL