

Corner Record

Document Number 1469

City of _____

County of Sacramento, California

Brief Legal Description

The end of a 5903.46' radius curve in the centerline of Rogue River Dr., 257.97' westerly of Whitewater Way, as shown on the "Plat of Larchmont Riviera Unit No. 4", filed in the office of the Recorder of the County of Sacramento in book 75 of maps, at page 7.

Corner Type

Coordinates

(Optional)



Government Corner ()	Control ()	N. _____
Meander ()	Property (x)	E. _____
Rancho ()	Other ()	Zone _____ Datum _____
Date of Survey <u>10/03/2005</u>		Elev. _____

Corner- Left as Found () Found and Tagged () Established () Reestablished (x) Rebuilt ()

Identification and Type of Corner Found, Evidence used to Identify or Procedure used to Establish or Reestablish the corner:

Found 3/4" iron pipe monument at the end of a 5903.46' radius curve in the centerline of Rogue River Dr., 257.97' westerly of Whitewater Way, as described in book 75 of maps, at page 7 filed in the office of the Recorder of Sacramento County, California. Set 3/4" Sacramento County brass tags in concrete for reference points. Refer to Sacramento County field notes A-257, page RP-8, 10/03/2005.

A Description of the Physical Condition of the Monument as Found and as Set or Reset:

Replaced original monument on 9/26/2006 with 2 1/2" brass disc in monument well stamped "Sacramento Co. Municipal Services, 2006" in original position after original monument was destroyed as a result of construction.

Surveyor's Statement

This Corner Record was prepared by me or under my direction in conformance with The Land Surveyor's Act on 11/01/2006

Signed Thomas F. X. Sekel
Thomas F. X. Sekel

L.S. or R.C.E. LS 4897



County Surveyor's Statement

This Corner Record was received 12/1, 2006 and examined and filed 12/26, 2006

Signed Larry Savio
Larry Savio

Title: Associate Land Surveyor

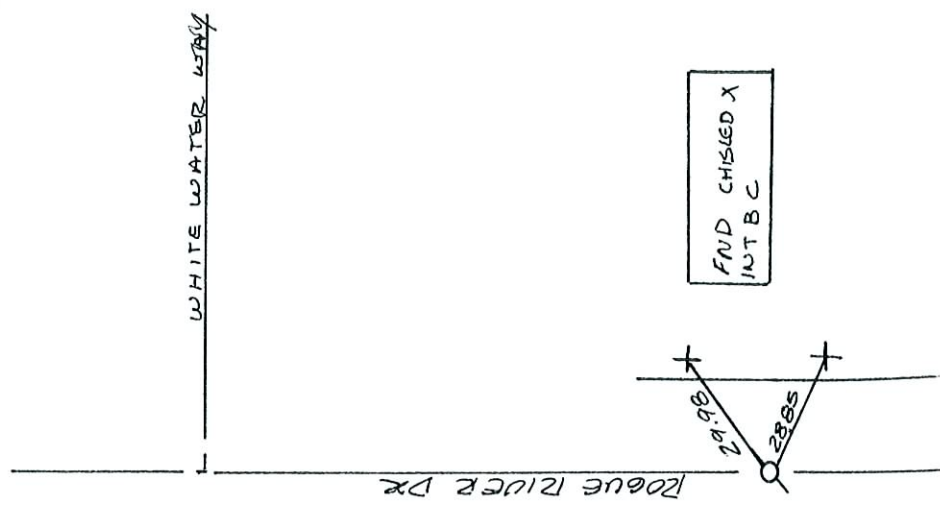
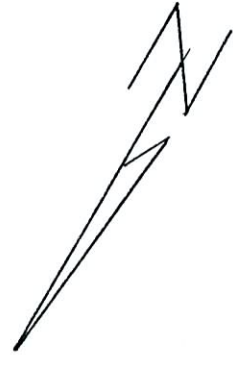
County Surveyor's Comments:



10.0302
R.P. 8 - of 11

R.L.M.
A.B.

PAVEMENT MAINTENANCE PROJ 05,06 S.M.



FND 3/4" I.P. @ E.C. PER 75 RM 7

*
 RESET W/ 2" BD
 IN MON WELL
 9-26-06 R.L.M.
 *