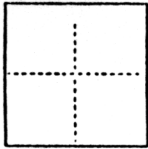


CORNER RECORD

COUNTY OF SACRAMENTO T. _____ R. _____ MERIDIAN CALIFORNIA

CORNER TYPE: GOV'T. CORNER MEANDER RANCHO CONTROL OTHER

CORNER IDENTIFICATION — DATE OF VISIT NOVEMBER 23 19 87



REMONUMENTATION OF LOT 3 PER 13 MAPS 49. LOCATION RIO LINDA BLVD. AND PLAZA BLVD., SACRAMENTO.

NORTH SACRAMENTO SUB #8 BLOCK 11 LOT 3

CORNER — LEFT AS FOUND FOUND AND TAGGED REESTABLISHED OBLITERATED CORNER REBUILT

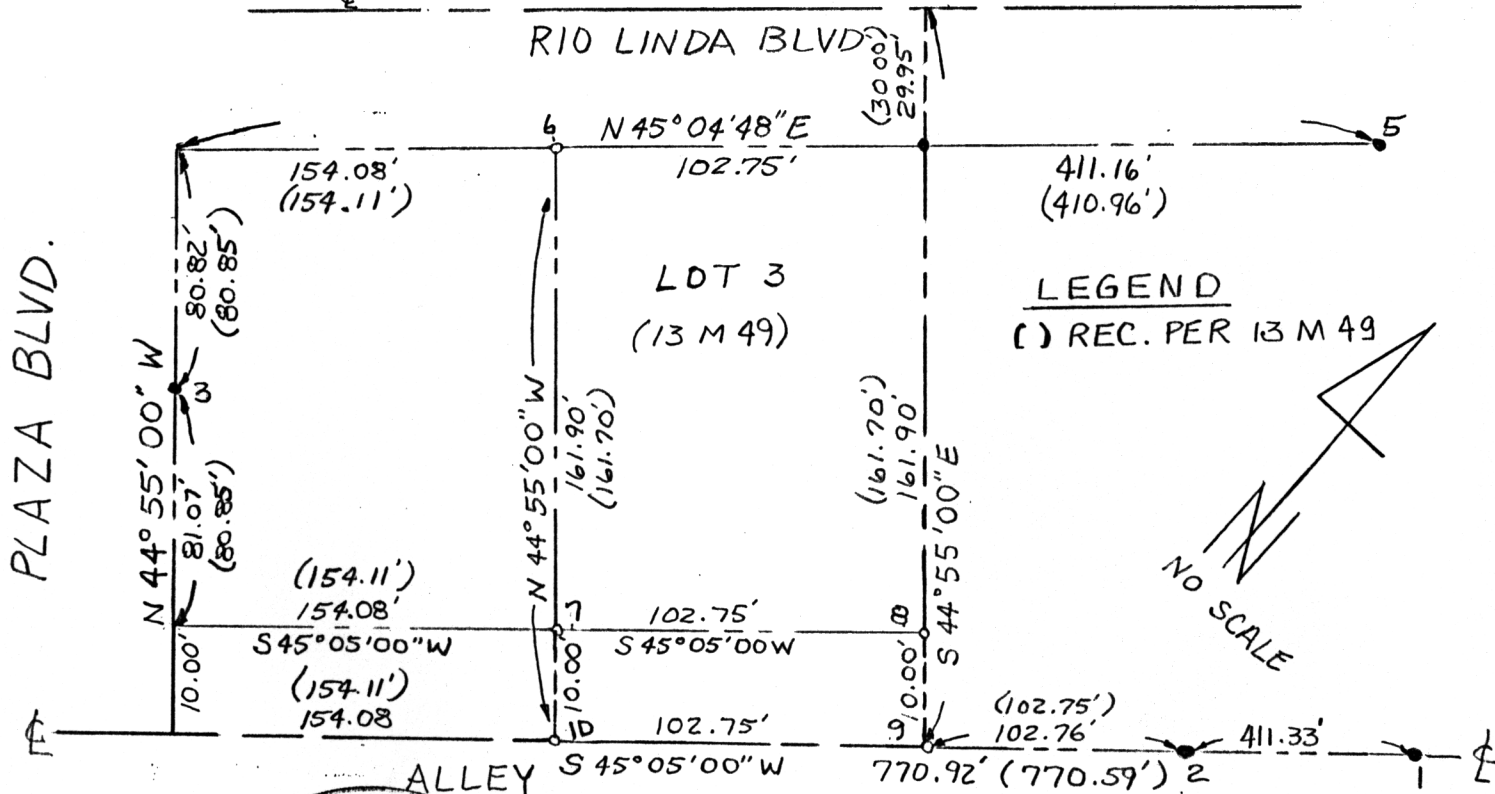
PHYSICAL DESCRIPTION OF CORNER FOUND; EVIDENCE AND METHOD USED TO IDENTIFY OR REESTABLISH

- | | |
|----------------------------------|------------------------|
| 1. FD. RAILROAD SPIKE | 5. FD. 3/4" IP LS 2657 |
| 2. FD. 3/4" IP (TAG NOT LEGIBLE) | |
| 3. FD. 3/4" IP (TAG NOT LEGIBLE) | |
| 4. FD. 5/8" REBAR (NO TAG) | |

PHYSICAL DESCRIPTION OF MONUMENTS REBUILT OR PERPETUATED

- | | |
|---|-------------------|
| 6. SET 1/2" REBAR W/PLASTIC CAP LS 5078 | 9. SET P.K. NAIL |
| 7. SET 1/2" REBAR W/PLASTIC CAP LS 5078 | 10. SET P.K. NAIL |
| 8. SET 1/2" REBAR W/PLASTIC CAP LS 5078 | |

SKETCH: (Include reference tie or witness points, remarks and topo of area)



THIS CORNER RECORD WAS PREPARED BY ME OR UNDER MY DIRECTION IN CONFORMANCE WITH THE LAND SURVEYORS ACT ON 12/10/87 19 87

SIGNED: _____

L.S. or R.C.E. No. _____

COUNTY SURVEYOR'S CERTIFICATE

THE CORNER RECORD WAS RECEIVED DEC 17, 1987 AND EXAMINED AND FILED DEC 18, 1987

BY: D. PARKER

TITLE: Supervising Eng. Tech

DOCUMENT No. 145

STATEMENT ON BACK OF SHEET

NO