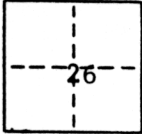


**CORNER RECORD**

COUNTY OF Sacramento T. 10 N R. 6 E M.D.M. MERIDIAN CALIFORNIA

CORNER TYPE: GOV'T. CORNER  MEANDER  RANCHO  CONTROL  OTHER  Property corner  
 CORNER IDENTIFICATION - DATE OF VISIT November 16, 19 87



**SYLVAN PARK #5 LOT 343**

CORNER - LEFT AS FOUND  FOUND AND TAGGED  REESTABLISHED OBLITERATED CORNER  REBUILT

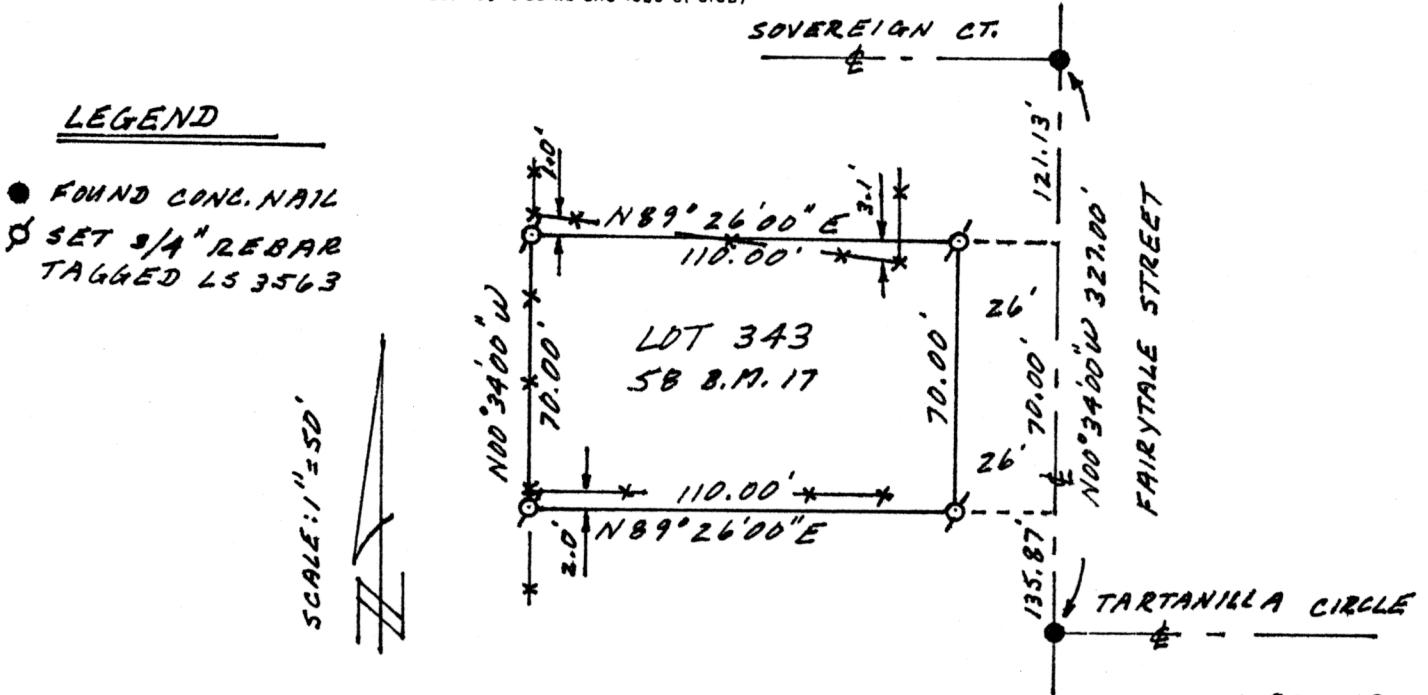
PHYSICAL DESCRIPTION OF CORNER FOUND: EVIDENCE AND METHOD USED TO IDENTIFY OR REESTABLISH  
 Found concrete nail at the intersections of Fairytale Street with Tartanilla Circle and Sovereign Court as shown on the Plat of Sylvan Park Unit No. 5, 58 B.M. 17.

PHYSICAL DESCRIPTION OF MONUMENTS REBUILT OR PERPETUATED

Set 3/4" rebar tagged L.S. 3563 at the four corners of lot 343 of Sylvan Park Unit No. 5, 58 B.M. 17.

CALIFORNIA COORDINATE SYSTEM ORDER: FIRST  SECOND  THIRD   
 STATIONS USED: NGS (USC & GS)  STATE  COUNTY  OTHER  STATION \_\_\_\_\_ STATION \_\_\_\_\_  
 ZONE \_\_\_\_\_ ELEVATION \_\_\_\_\_ NORTHINGS (Y) \_\_\_\_\_ EASTINGS (X) \_\_\_\_\_

SKETCH: (Include reference tie or witness points, remarks and topo of area)



**SURVEYOR'S CERTIFICATE**

THIS CORNER RECORD WAS PREPARED BY ME OR UNDER MY DIRECTION IN CONFORMANCE WITH THE LAND SURVEYORS ACT November 23, 19 87

SIGNED: Lloyd C. Parker  
 License No.: L.S. 3563

SEAL

**COUNTY SURVEYOR'S CERTIFICATE**

THIS CORNER RECORD WAS RECEIVED 12-2 1987  
 AND EXAMINED AND FILED 12-3 1987

BY: D. PARKER  
 TITLE: SUPERVISING ENG. TECH

DOCUMENT No. 143

STATEMENT ON BACK OF SHEET

YES  NO

