

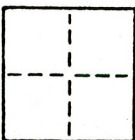
CORNER RECORD

014

COUNTY OF Sacramento T. 4 North R. 3 East Mt. Diablo MERIDIAN CALIFORNIA

CORNER TYPE: GOVT. CORNER MEANDER RANCHO CONTROL OTHER

CORNER IDENTIFICATION — DATE OF VISIT Sept. 29, 1984
Nov. 9, 1984



CORNER — LEFT AS FOUND FOUND AND TAGGED REESTABLISHED OBLITERATED CORNER REBUILT

PHYSICAL DESCRIPTION OF CORNER FOUND; EVIDENCE AND METHOD USED TO IDENTIFY OR REESTABLISH
N.W. MON. FRANCIS STEPHENSON PROPERTY at LEVEE R/W LINE

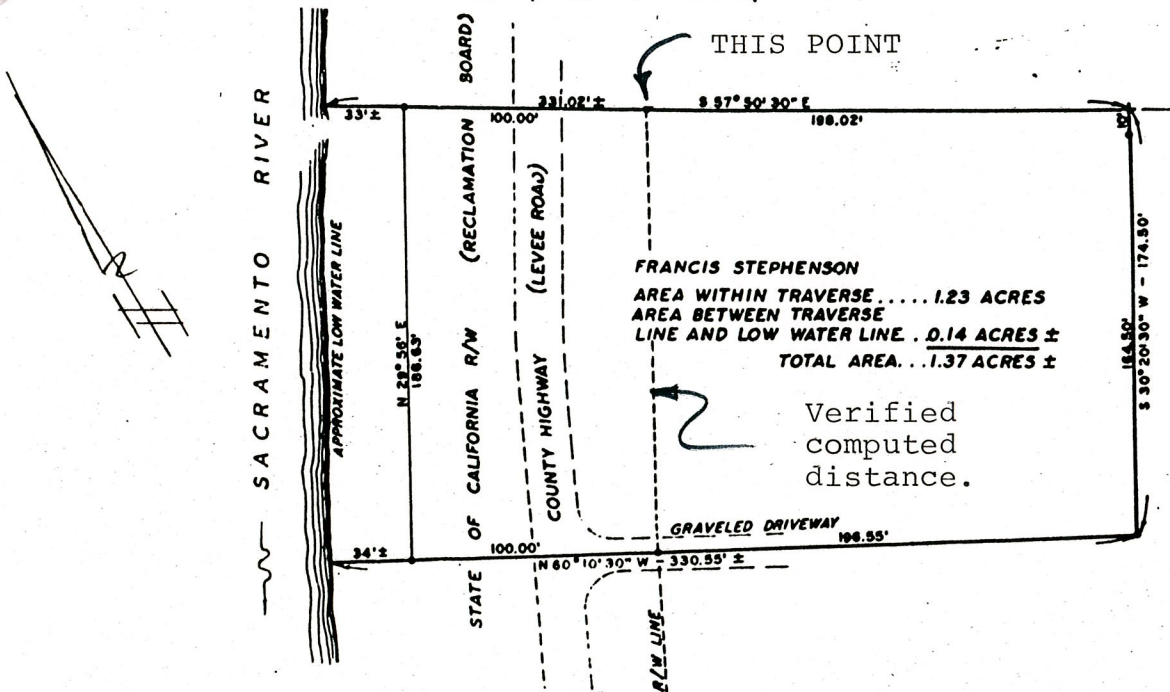
Shown on Survey filed in VOL. 10 of SURVEYS, MAP No. 34

A 1" o.d. iron pipe set in concrete - no tag.
 Grouted tag L.S. 2457 in top.

PHYSICAL DESCRIPTION OF MONUMENTS REBUILT OR PERPETUATED

CALIFORNIA COORDINATE SYSTEM ORDER: FIRST SECOND THIRD
 STATIONS USED: NGS (USC & GS) STATE COUNTY OTHER STATION _____ STATION _____
 ZONE _____ ELEVATION _____ NORTHINGS (Y) _____ EASTINGS (X) _____

SKETCH: (Include reference tie or witness points, remarks and topo of area)



SURVEYOR'S CERTIFICATE

THIS CORNER RECORD WAS PREPARED BY ME OR UNDER MY DIRECTION IN CONFORMANCE WITH THE LAND SURVEYORS ACT ON Dec. 6, 1984 19__

SIGNED: [Signature]
 L.S. or R.C.E. No.: L.S. 2457

SEAL

COUNTY SURVEYOR'S CERTIFICATE

THE CORNER RECORD WAS RECEIVED _____ 19__
 AND EXAMINED AND FILED _____ 19__

BY: _____
 TITLE: _____

DOCUMENT No. 14

STATEMENT ON BACK OF SHEET

YES NO