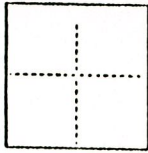


COUNTY OF SACRAMENTO T. 8N R. 6E MERIDIAN CALIFORNIA

CORNER TYPE: GOV'T. CORNER [] MEANDER [] RANCHO [] CONTROL [] OTHER []

CORNER IDENTIFICATION — DATE OF VISIT 19



REMONUMENTATION OF PARCEL "B" PER 6 MAP 21. LOCATION MICRON AVE. AND BRADSHAW RD. IN THE CITY OF SACRAMENTO.

SEC 8 T8N.R6E MDM

CORNER — LEFT AS FOUND [] FOUND AND TAGGED [] REESTABLISHED OBLITERATED CORNER [] REBUILT []

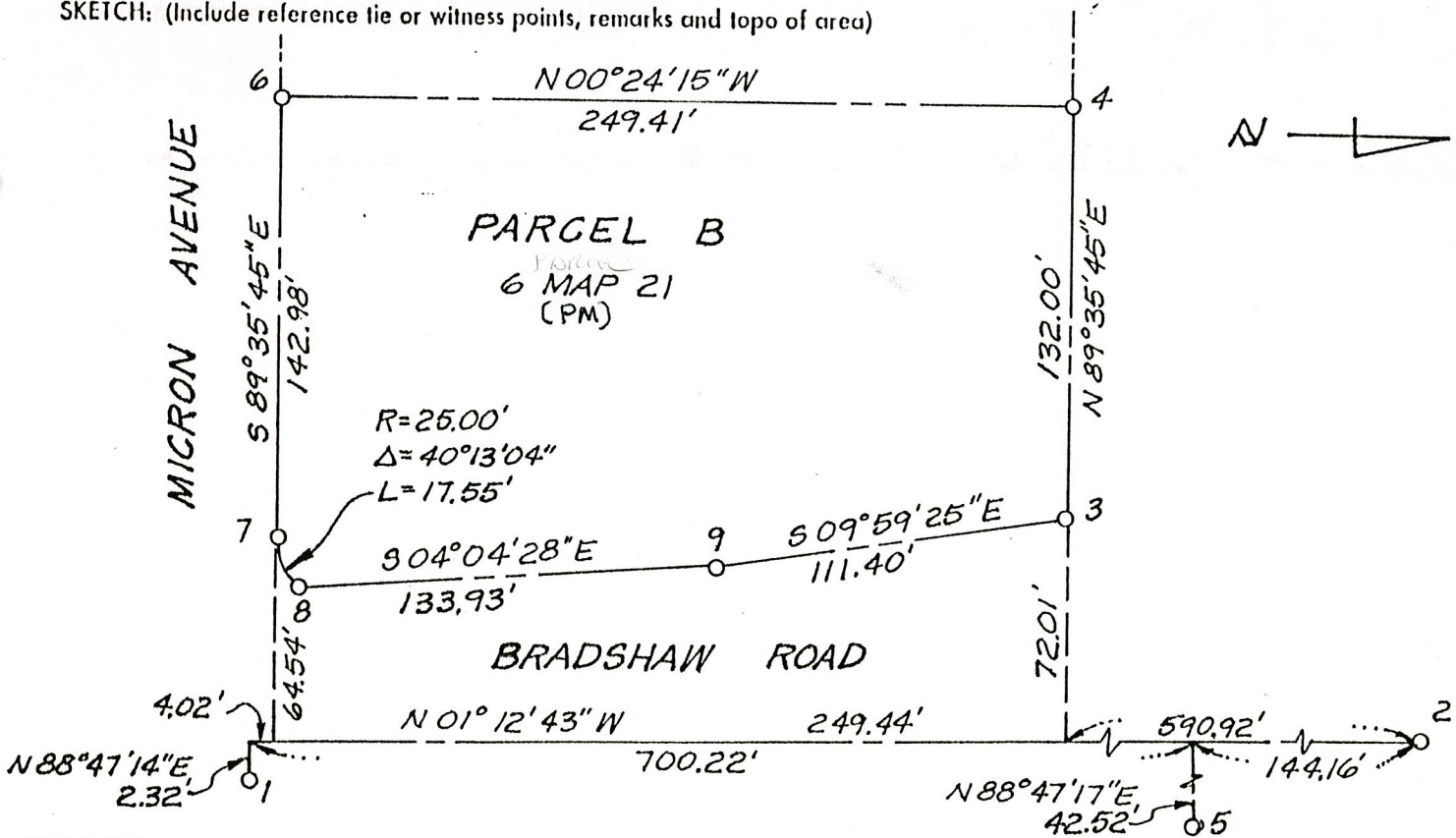
PHYSICAL DESCRIPTION OF CORNER FOUND; EVIDENCE AND METHOD USED TO IDENTIFY OR REESTABLISH

- 1. BRASS DISC STAMPED 24/551
2. P.K. NAIL @ STATION 20+00.00
3. 1/2" REBAR (NO TAG)
4. 1/2" REBAR (NO TAG)
5. BRASS DISC STAMPED 24/551

PHYSICAL DESCRIPTION OF MONUMENTS REBUILT OR PERPETUATED

- 6. CUT CROSS 5 FOOT OFF SET
7. CUT CROSS
8. CUT CROSS
9. NAIL W/TAG 4804 (P.K. NAIL)

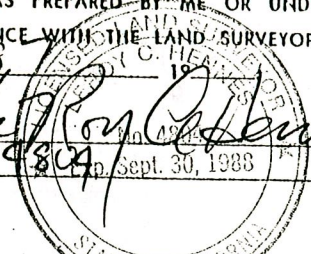
SKETCH: (Include reference tie or witness points, remarks and topo of area)



SURVEYOR'S CERTIFICATE

THIS CORNER RECORD WAS PREPARED BY ME OR UNDER MY DIRECTION IN CONFORMANCE WITH THE LAND SURVEYORS ACT ON 10-6-87

SIGNED: [Signature] L.S. or R.C.E. No. 4804



COUNTY SURVEYOR'S CERTIFICATE

THE CORNER RECORD WAS RECEIVED OCT 13 1987 AND EXAMINED AND FILED OCT 14 1987

BY: D. PARKER TITLE: SUPERVISING ENG. TECH

DOCUMENT No. 139

STATEMENT ON BACK OF SHEET