

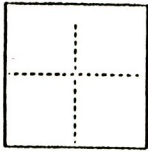
CORNER RECORD

SW 1/4 21 / 38

COUNTY OF SACRAMENTO T. 8N R. 5E M.D.M. MERIDIAN CALIFORNIA

CORNER TYPE: GOV'T. CORNER MEANDER RANCHO CONTROL OTHER

CORNER IDENTIFICATION — DATE OF VISIT _____ 19____



REMONUMENTATION OF PARCEL 8, PER 94 PM 10. LOCATION STOCKTON BLVD. AND FRUITRIDGE RD. IN THE CITY OF SACRAMENTO.

SW 1/4 SEC 21 T8N. R5E MDM

CORNER — LEFT AS FOUND FOUND AND TAGGED REESTABLISHED OBLITERATED CORNER REBUILT

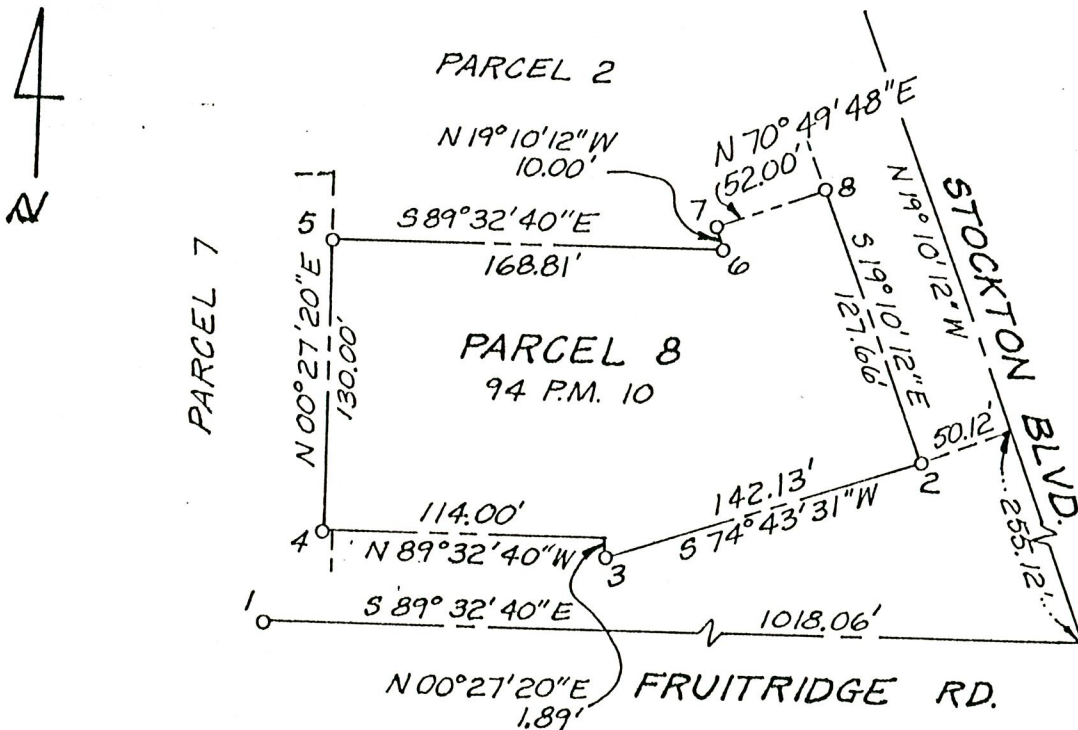
PHYSICAL DESCRIPTION OF CORNER FOUND; EVIDENCE AND METHOD USED TO IDENTIFY OR REESTABLISH

- 1. SPIKE W/SHINER
- 2. CONC NAIL W/TAG RCE 16047

PHYSICAL DESCRIPTION OF MONUMENTS REBUILT OR PERPETUATED

- 3. P.K. NAIL W/TAG LS 4804
- 4. P.K. NAIL W/TAG LS 4804
- 5. P.K. NAIL W/TAG LS 4804
- 6. P.K. NAIL W/TAG LS 4804
- 7. P.K. NAIL W/TAG LS 4804
- 8. 5/8" REBAR W/PLASTIC CAP LS 4804

SKETCH: (Include reference tie or witness points, remarks and topo of area)



SURVEYOR'S CERTIFICATE

THIS CORNER RECORD WAS PREPARED BY ME OR UNDER MY DIRECTION IN CONFORMANCE WITH THE LAND SURVEYORS ACT ON 10-6-87

SIGNED: [Signature]

L.S. or R.C.E. No. L.S. 4804 Exp. Sept. 30, 1988



COUNTY SURVEYOR'S CERTIFICATE

THE CORNER RECORD WAS RECEIVED OCT 13, 1987 AND EXAMINED AND FILED OCT 14, 1987

BY: D PARKER
TITLE: SUPERVISING ENG. TECH

DOCUMENT No. 138

STATEMENT ON BACK OF SHEET