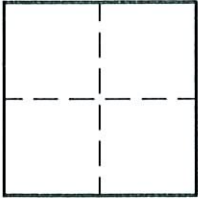


# CORNER RECORD

Document Number 1359  
County of SACRAMENTO, California

City of ELK GROVE

Legal Description \_\_\_\_\_



### CORNER TYPE

Government Corner  Control   
Meander  Property   
Rancho  Other   
Date of Survey \_\_\_\_\_

### CORNER TYPE (Optional)

N. \_\_\_\_\_  
E. \_\_\_\_\_  
Zone \_\_\_\_\_ Datum \_\_\_\_\_  
Elev. \_\_\_\_\_

Corner - Left as found  Found and tagged  Established  Reestablished  Rebuilt

Identification and type of corner found: Evidence used to identify or procedure used to establish or reestablish the corner.  
FOUND 1/2" REBAR IN THE EASTERLY KNUCKLE OF MINNIE CIRCLE PER 134RM4.

A description of the physical condition of the monument as found and as set or reset. \_\_\_\_\_

### SURVEYOR'S STATEMENT

This Corner Record was prepared by me or under my direction in conformance with the Land Surveyor's Act on Nov 28 2006.

Signed Scott A. Bryson (L.S.) or R.C.E. Number 7228.



### COUNTY SURVEYOR'S STATEMENT

This Corner Record was received 12/14 2006.

and filed 12/21 2006.

Signed Larry S. Savio Title ASSOC. L.S.



County Surveyor's Comment \_\_\_\_\_

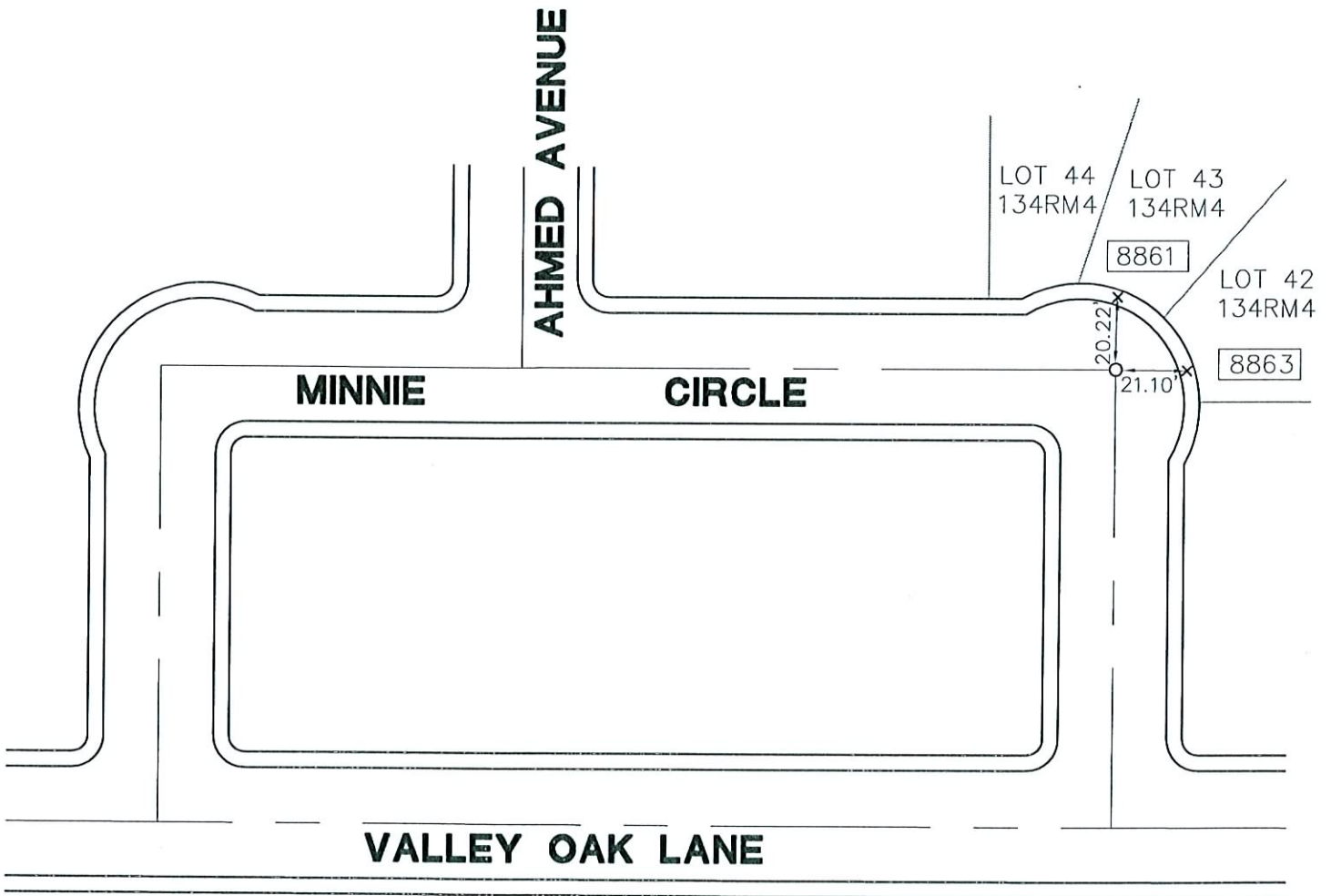
# LEGEND

Document Number \_\_\_\_\_

x SET CUT CROSS IN TOP OF CURB

o FOUND 1/2" REBAR PER 134RM4

□ STREET ADDRESS



NOT TO SCALE