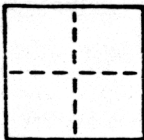


CORNER RECORD

COUNTY OF SACRAMENTO T. _____ R. _____ MERIDIAN _____ CALIFORNIA

CORNER TYPE: GOVT. CORNER MEANDER RANCHO CONTROL OTHER

CORNER IDENTIFICATION — DATE OF VISIT JULY 20, 1987



LOT 373 SUNRISE GREENS UNIT NO. 3, 163 B.M. 2

CORNER — LEFT AS FOUND FOUND AND TAGGED REESTABLISHED OBLITERATED CORNER REBUILT

PHYSICAL DESCRIPTION OF CORNER FOUND; EVIDENCE AND METHOD USED TO IDENTIFY OR REESTABLISH

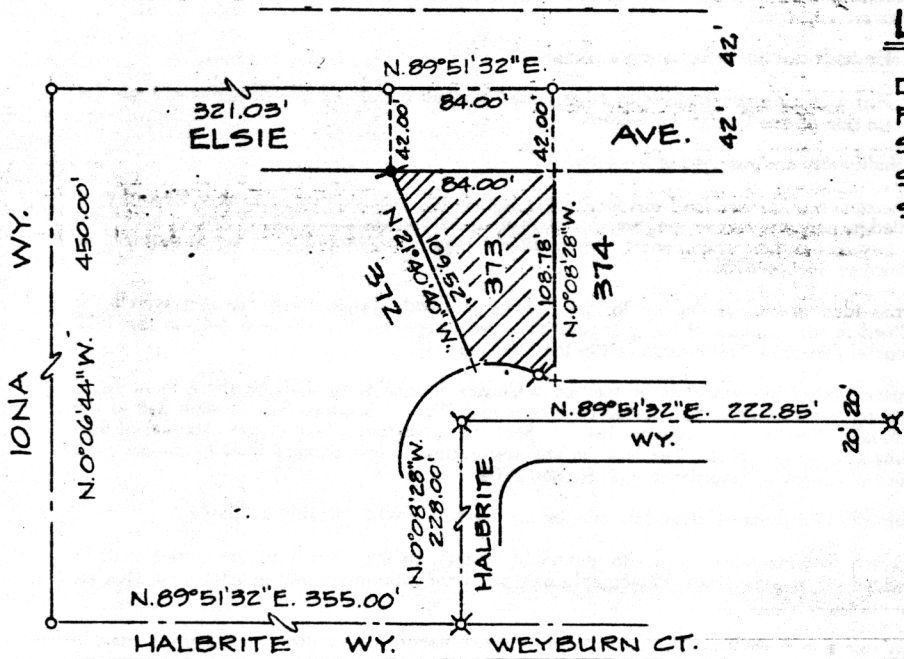
SEE SKETCH

PHYSICAL DESCRIPTION OF MONUMENTS REBUILT OR PERPETUATED

SEE SKETCH

CALIFORNIA COORDINATE SYSTEM ORDER: FIRST SECOND THIRD
 STATIONS USED: NGS (USC & GS) STATE COUNTY OTHER STATION _____ STATION _____
 ZONE _____ ELEVATION _____ NORTHINGS (N) _____ EASTINGS (E) _____

SKETCH: (Include reference tie or witness points, remarks and topo of area)



LEGEND:

- DIMENSION POINT ———— o
- FD. 3/4" I.P. ———— X
- SET 5/8" REBAR L.S. 5123 ———— o
- SET '4' IN SDWK ———— +
- SET 60 P SPK. ———— X

SURVEYOR'S CERTIFICATE

THIS CORNER RECORD WAS PREPARED BY ME OR UNDER MY DIRECTION IN CONFORMANCE WITH THE LAND SURVEYORS ACT ON JULY 23, 1987

SIGNED: [Signature]
 L.S. or R.C.E. No.: L.S. 5123

SEAL

COUNTY SURVEYOR'S CERTIFICATE

THE CORNER RECORD WAS RECEIVED July 1987
 AND EXAMINED AND FILED July 28, 1987

BY: [Signature]
 TITLE: SUPERVISOR ENGINEERING - TERA

DOCUMENT No. 134

STATEMENT ON BACK OF SHEET

YES NO