

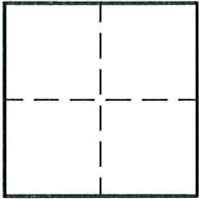
CORNER RECORD

Document Number 1329

City of ELK GROVE

County of SACRAMENTO, California

Legal Description _____



CORNER TYPE

Government Corner Control
Meander Property
Rancho Other
Date of Survey _____

CORNER TYPE (Optional)

N. _____
E. _____
Zone _____ Datum _____
Elev. _____

Corner - Left as found Found and tagged Established Reestablished Rebuilt

Identification and type of corner found: Evidence used to identify or procedure used to establish or reestablish the corner.
FOUND 3/4" IRON PIPE IN INTERSECTION OF PARK MEADOWS DRIVE AND MEADOWSWEET WAY
PER 114RM9.

A description of the physical condition of the monument as found and as set or reset. _____

SURVEYOR'S STATEMENT

This Corner Record was prepared by me or under my direction in conformance with the Land Surveyor's Act on Nov. 28 2006.

Signed Scott A. Bryant (L.S.) or R.C.E. Number 7228.



COUNTY SURVEYOR'S STATEMENT

This Corner Record was received 12/14 20006

and filed 12/21 20006

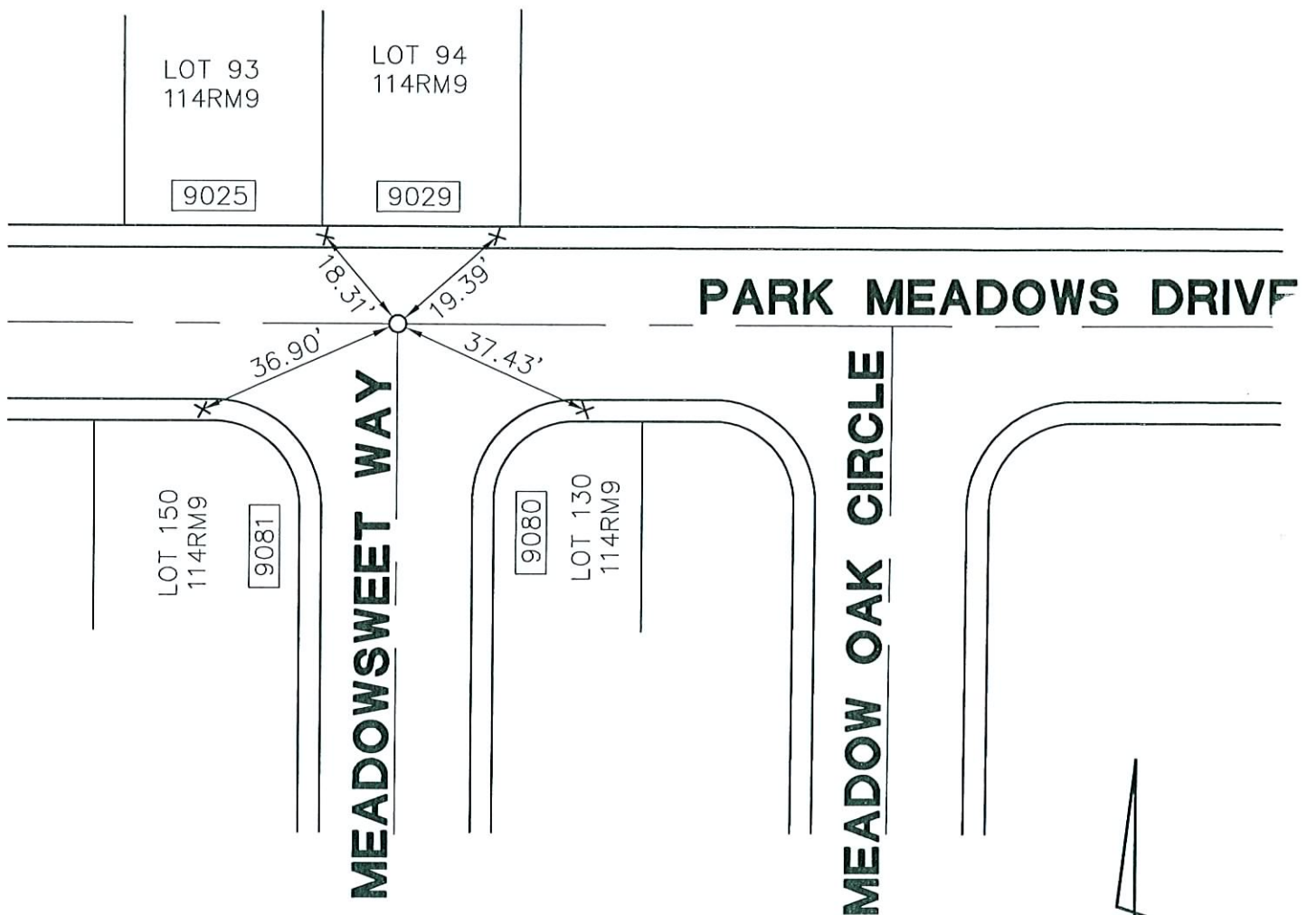
Signed Larry S. Savio Title ASSOC. C.S.



County Surveyor's Comment _____

LEGEND

- × SET CUT CROSS IN TOP OF CURB
- FOUND 3/4" IRON PIPE PER 114RM9
- STREET ADDRESS



NOT TO SCALE