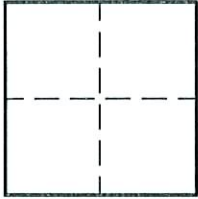


# CORNER RECORD

Document Number 1309  
County of SACRAMENTO, California

City of ELK GROVE

Legal Description \_\_\_\_\_



### CORNER TYPE

Government Corner  Control   
Meander  Property   
Rancho  Other   
Date of Survey \_\_\_\_\_

### CORNER TYPE (Optional)

N. \_\_\_\_\_  
E. \_\_\_\_\_  
Zone \_\_\_\_\_ Datum \_\_\_\_\_  
Elev. \_\_\_\_\_

Corner - Left as found  Found and tagged  Established  Reestablished  Rebuilt

Identification and type of corner found: Evidence used to identify or procedure used to establish or reestablish the corner.  
FOUND 3/4" IRON PIPE IN THE CENTERLINE OF CADURA CIRCLE (SOUTHWESTERLY KNUCKLE)  
PER 142RM4.

A description of the physical condition of the monument as found and as set or reset. \_\_\_\_\_

### SURVEYOR'S STATEMENT

This Corner Record was prepared by me or under my direction in conformance with the Land Surveyor's Act on Nov. 28 2006.

Signed Scott A Bryan (L.S.) or R.C.E. Number 7228.



### COUNTY SURVEYOR'S STATEMENT

This Corner Record was received 12/14 2006.

and filed 12/20 2006.

Signed Larry S. Savio Title ASSOC. L.S.

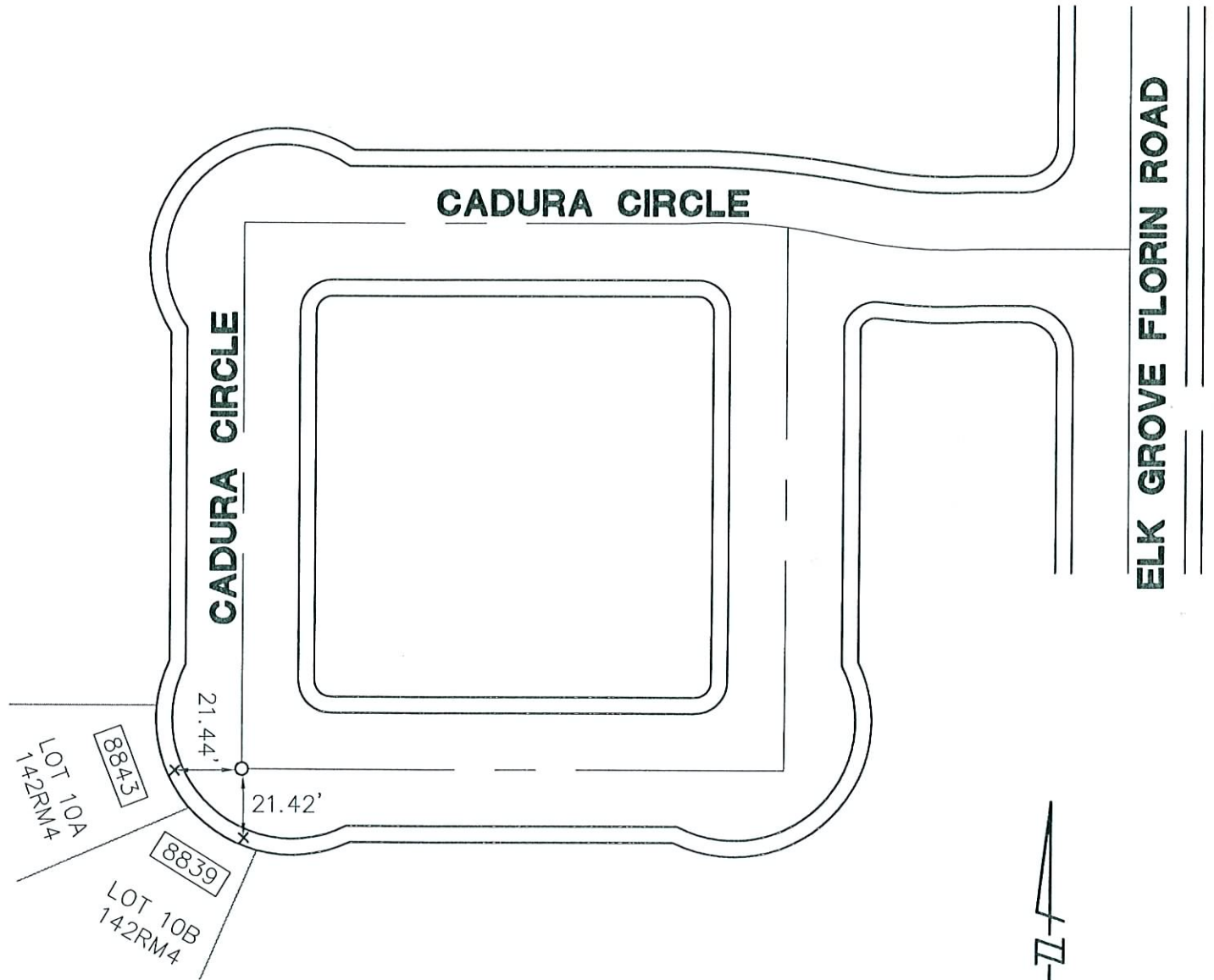


County Surveyor's Comment \_\_\_\_\_

# LEGEND

Document Number \_\_\_\_\_

- x SET CUT CROSS IN TOP OF CURB
- o FOUND 3/4" IRON PIPE PER 142RM4
- STREET ADDRESS



NOT TO SCALE