

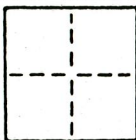
**CORNER RECORD**

013

COUNTY OF Sacramento T. 4 North R. 3 East Mt. Diablo MERIDIAN CALIFORNIA

CORNER TYPE: GOV'T. CORNER  MEANDER  RANCHO  CONTROL  OTHER

CORNER IDENTIFICATION — DATE OF VISIT Sept. 29 1984  
Nov. 9 1984



CORNER — LEFT AS FOUND  FOUND AND TAGGED  REESTABLISHED OBLITERATED CORNER  REBUILT

PHYSICAL DESCRIPTION OF CORNER FOUND; EVIDENCE AND METHOD USED TO IDENTIFY OR REESTABLISH  
10' REF. MON. TO N.E. COR. FRANCIS STEPHENSON PROPERTY

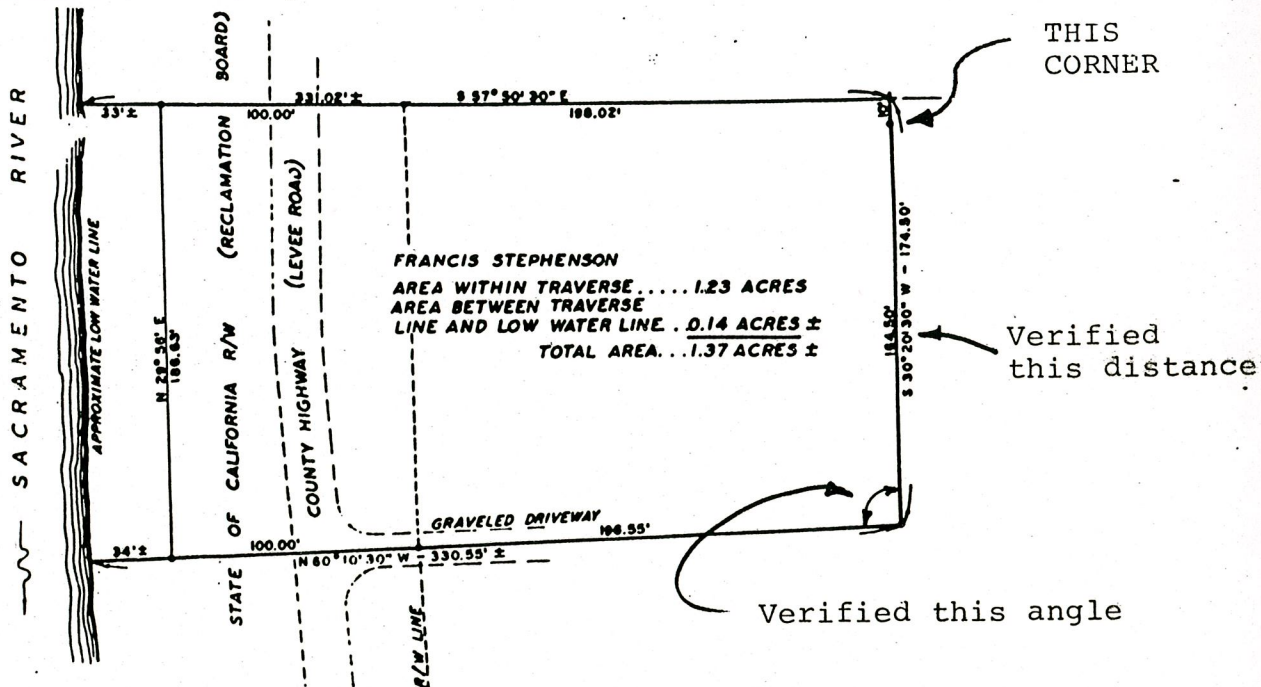
Shown on Survey filed in Vol. 10 of Surveys, Map No. 34

A 1" iron pipe set in concrete - no tag.  
Grouted tag L.S. 2457 in top.

PHYSICAL DESCRIPTION OF MONUMENTS REBUILT OR PERPETUATED

CALIFORNIA COORDINATE SYSTEM ORDER: FIRST  SECOND  THIRD   
STATIONS USED: NGS (USC & GS)  STATE  COUNTY  OTHER  STATION \_\_\_\_\_ STATION \_\_\_\_\_  
ZONE \_\_\_\_\_ ELEVATION \_\_\_\_\_ NORTHINGS (Y) \_\_\_\_\_ EASTINGS (X) \_\_\_\_\_

SKETCH: (Include reference tie or witness points, remarks and topo of area)



**SURVEYOR'S CERTIFICATE**

THIS CORNER RECORD WAS PREPARED BY ME OR UNDER MY DIRECTION IN CONFORMANCE WITH THE LAND SURVEYORS ACT ON December 6, 1984

SIGNED: J. M. S. S. S.

L.S. or R.C.E. No.: L.S. 2457

SEAL

**COUNTY SURVEYOR'S CERTIFICATE**

THE CORNER RECORD WAS RECEIVED \_\_\_\_\_ 19\_\_\_\_ AND EXAMINED AND FILED \_\_\_\_\_ 19\_\_\_\_

BY: \_\_\_\_\_

TITLE: \_\_\_\_\_

DOCUMENT No. 13

STATEMENT ON BACK OF SHEET

YES  NO