

Corner Record

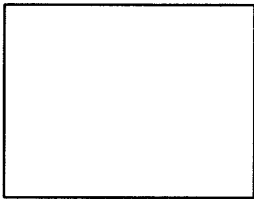
Document Number 1299

City of _____

County of Sacramento, California

Brief Legal Description

The beginning of a 1700' radius curve on the centerline of American River Dr., 75.16' west of Wilhaggin Dr., as shown on the "Plat of Wilhaggin West Unit No. 3", filed in the office of the Recorder of the County of Sacramento in book 76 of maps, at page 10.



Corner Type

Coordinates

(Optional)

Government Corner	()	Control	()	N.	_____
Meander	()	Property	(x)	E.	_____
Rancho	()	Other	()	Zone	_____ Datum _____
Date of Survey	<u>11/03/2004</u>	Elev.	_____		

Corner- Left as Found () Found and Tagged () Established () Reestablished (x) Rebuilt ()

Identification and Type of Corner Found, Evidence used to Identify or Procedure used to Establish or Reestablish the corner:

Found 3/4" iron pipe monument on centerline of American River Dr., as described in book 76 of maps, at page 10, filed in the office of the Recorder of Sacramento County, California. Set 3/4" Sacramento County brass tags in concrete for reference points. Refer to Sacramento County field notes A255, page RP-21, 11/03/2004.

A Description of the Physical Condition of the Monument as Found and as Set or Reset:

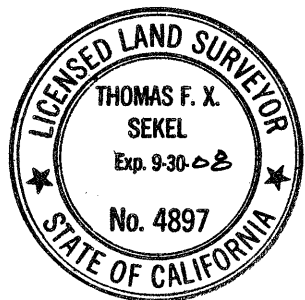
Replaced original monument on 7/11/2006 with 2 1/2" brass disc in monument well stamped "Sacramento Co. Municipal Services, 2006" in original position after original monument was destroyed as a result of construction.

Surveyor's Statement

This Corner Record was prepared by me or under my direction in conformance with The Land Surveyor's Act on 10/10/2006

Signed Thomas F. X. Sekel
Thomas F. X. Sekel

L.S. or R.C.E. LS 4897



County Surveyor's Statement

This Corner Record was received 10/11, 2006 and examined and filed 10/27, 2006

Signed Larry Savio
Larry Savio

Title: Associate Land Surveyor

County Surveyor's Comments:

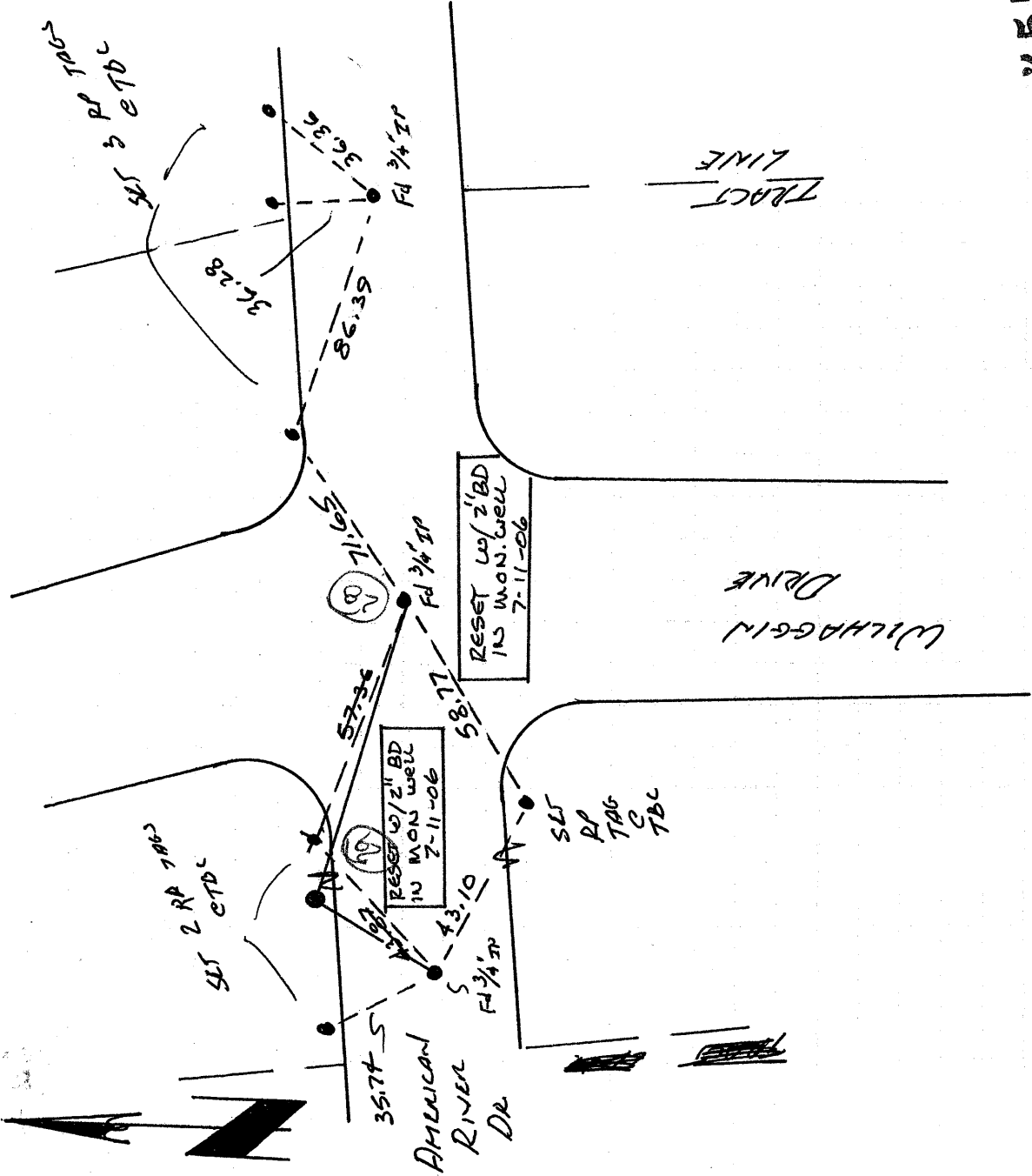


DRAW: SAVIO Date: 11/3/04
KLIPSCH Page: 21/23

Project: American River Dr. overlay

STIP VI

PLAT OF
WILHAGEN WEST
UNIT #3
76 BM 10



A 255