

# Corner Record

Document Number 1259

City of Rancho Cordova

County of Sacramento, California

## Brief Legal Description

The intersection of the centerline of Lincoln Village Dr. and Atomic Court, as shown on the "Plat of Lincoln Village Unit No. 2", filed in the office of the Recorder of the County of Sacramento in book 57 of maps, at page 28.

## Corner Type

## Coordinates

(Optional)



Government Corner	( )	Control	( )	N.	_____
Meander	( )	Property	(x)	E.	_____
Rancho	( )	Other	( )	Zone	_____ Datum _____
Date of Survey	<u>11/05/2004</u>	Elev.	_____		

Corner- Left as Found ( ) Found and Tagged ( ) Established ( ) Reestablished (x) Rebuilt ( )

## Identification and Type of Corner Found, Evidence used to Identify or Procedure used to Establish or Reestablish the corner:

Found Sac. Co. Spike & Washer on centerline intersection of Lincoln Village Dr. and Atomic Court as described in book 57 of maps, at page 28 filed in the office of the Recorder of Sacramento County, California. Set 3/4" Sacramento County brass tags in concrete for reference points. Refer to Sacramento County field notes L-85, page RP-3, 11/05/2004.

## A Description of the Physical Condition of the Monument as Found and as Set or Reset:

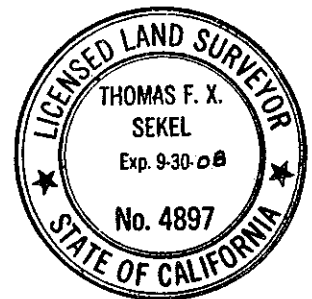
Replaced original monument on 9/05/2006 with 2 1/2" brass disc in monument well stamped "Sacramento Co. Municipal Services, 2006" in original position after original monument was destroyed as a result of construction.

## Surveyor's Statement

This Corner Record was prepared by me or under my direction in conformance with The Land Surveyor's Act on 10/10/2006

Signed Thomas F. X. Sekel  
Thomas F. X. Sekel

L.S. or R.C.E. LS 4897



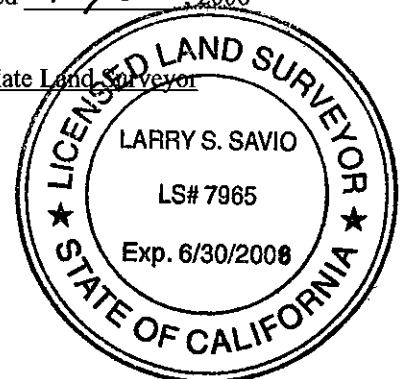
## County Surveyor's Statement

This Corner Record was received 10/11, 2006 and examined and filed 10/26, 2006

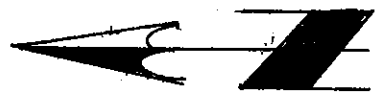
Signed Larry Savio  
Larry Savio

Title : Associate Land Surveyor

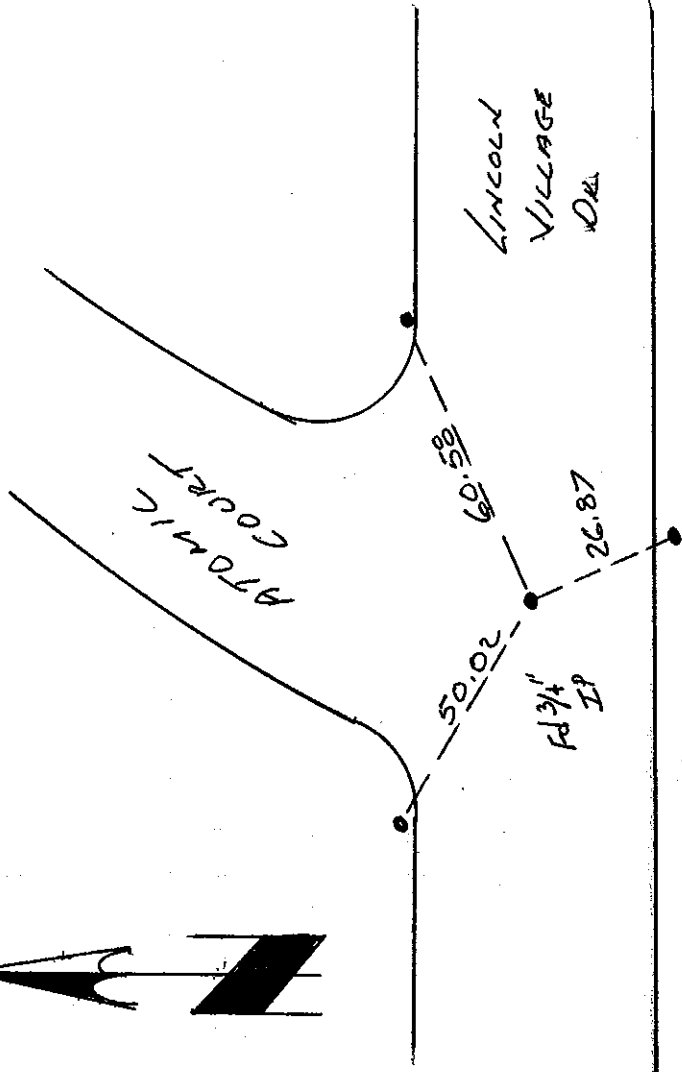
County Surveyor's Comments:



Project: LINCOLN VILLAGE DR.      Crew: SAVIO      Date: 11/5/04  
TOVERLAY      KLIASCH      Page: RP 3/13



PLAT of  
LINCOLN VILLAGE #2  
UNIT  
57BM28



RESET 2" B.P.  
IN MON. WELL  
9-5-06