

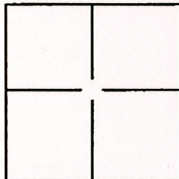
# CORNER RECORD

City of Orangevale

Document Number 1247-1

County of Sacramento, California

Brief Legal Description Parcel D 38 PM 41, Sacramento County Records



### CORNER TYPE

Government Corner  Control   
Meander  Property   
Rancho  Other

Date of Survey 05/08/2006

### COORDINATES(Optional)

N. \_\_\_\_\_

E. \_\_\_\_\_

Zone \_\_\_\_\_ NAD27  NAD83

NAD83 Epoch \_\_\_\_\_

Elevation \_\_\_\_\_

Vert. Datum: NGVD29  NAV88

Meas. Units: Metric  Imperial

Corner - Left as found  Found and tagged  Established  Reestablished  Rebuilt

Identification and type of corner found: Evidence used to identify or procedure used to establish or reestablish the corner:

Original plat dimension were held based on found monuments to Set corners as shown,

A description of the physical condition of the monument as found and as set or reset: \_\_\_\_\_

Monuments found appear to be un-disturbed flush with ground surface.

### SURVEYOR'S STATEMENT

This Corner Record was prepared by me or under my direction in conformance with the Land Surveyor's Act on May 12, 2006.

Signed Edgar D Brown P.L.S. or R.C.E. Number PLS 5405

### COUNTY SURVEYOR'S STATEMENT

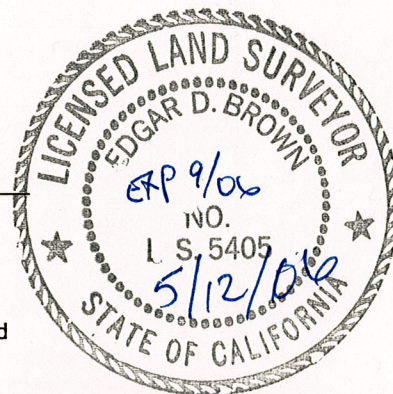
This Corner Record was received 5/24, 2006 and examined

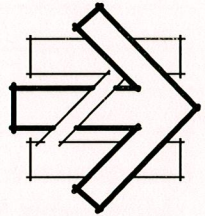
and filed 6/7, 2006.

Signed Larry S. Savio P.L.S. or R.C.E. Number LS 7965

Title ASSOCIATE L.S.

County Surveyor's Comment \_\_\_\_\_





1"=100'

LEGEND

- Set nail with tag stamped "LS5405"
- Found as noted

