

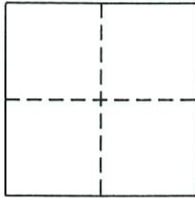
CORNER RECORD

Document Number 1209

City of RANCHO CORDOVA

County of SACRAMENTO, California

Brief Legal Description Corner monuments for Lots 32 & 33 342 B.M. 13



CORNER TYPE

Government Type Control
Meander Property
Rancho Other
Date of Survey _____

COORDINATES (Optional)

N. _____
E. _____
Zone _____ NAD27 NAD83
NAD83 Epoch _____
Vert. Datum: NGVD29 NAVD88
Meas. Units: Metric Imperial

Corner - Left as found Found and tagged Established Reestablished Rebuilt

Identification and type of corner found: Evidence used to identify or procedure used to establish or reestablish the corner:
NO MONUMENTS SET AT REAR CORNERS OF LOTS 32-33 AS SHOWN ON THAT CERTAIN FINAL MAP ENTITLED
"ANATOLIA COMMONS" FILED FOR RECORD IN BOOK 342 OF MAPS, AT PAGE 13, SACRAMENTO COUNTY RECORDS.
USED RECORD MONUMENTS AS SHOWN ON SAID FINAL MAP TO SET 5/8" REBAR WITH PLASTIC CAP STAMPED
L.S. 7944 AT A TWO (2') FOOT OFFSET ALONG THE PROPERTY LINE FOR THE ABOVE MENTIONED PROPERTY
CORNERS OF LOTS 32-33.

A Description of the physical condition of the monument as found and as set or reset:
MONUMENT FOUND AT SOUTHEAST CORNER OF SUBDIVISION IS IN GOOD CONDITION. SET 5/8" REBAR WITH PLASTIC
CAP STAMPED L.S. 7944 ARE IN GOOD CONDITION.

SURVEYOR'S STATEMENT

This Corner Record was prepared by me or under my direction in conformance with
the Land Surveyor's Act on November 17 2005
Signed [Signature] P.L.S. or R.C.E. No. 7944



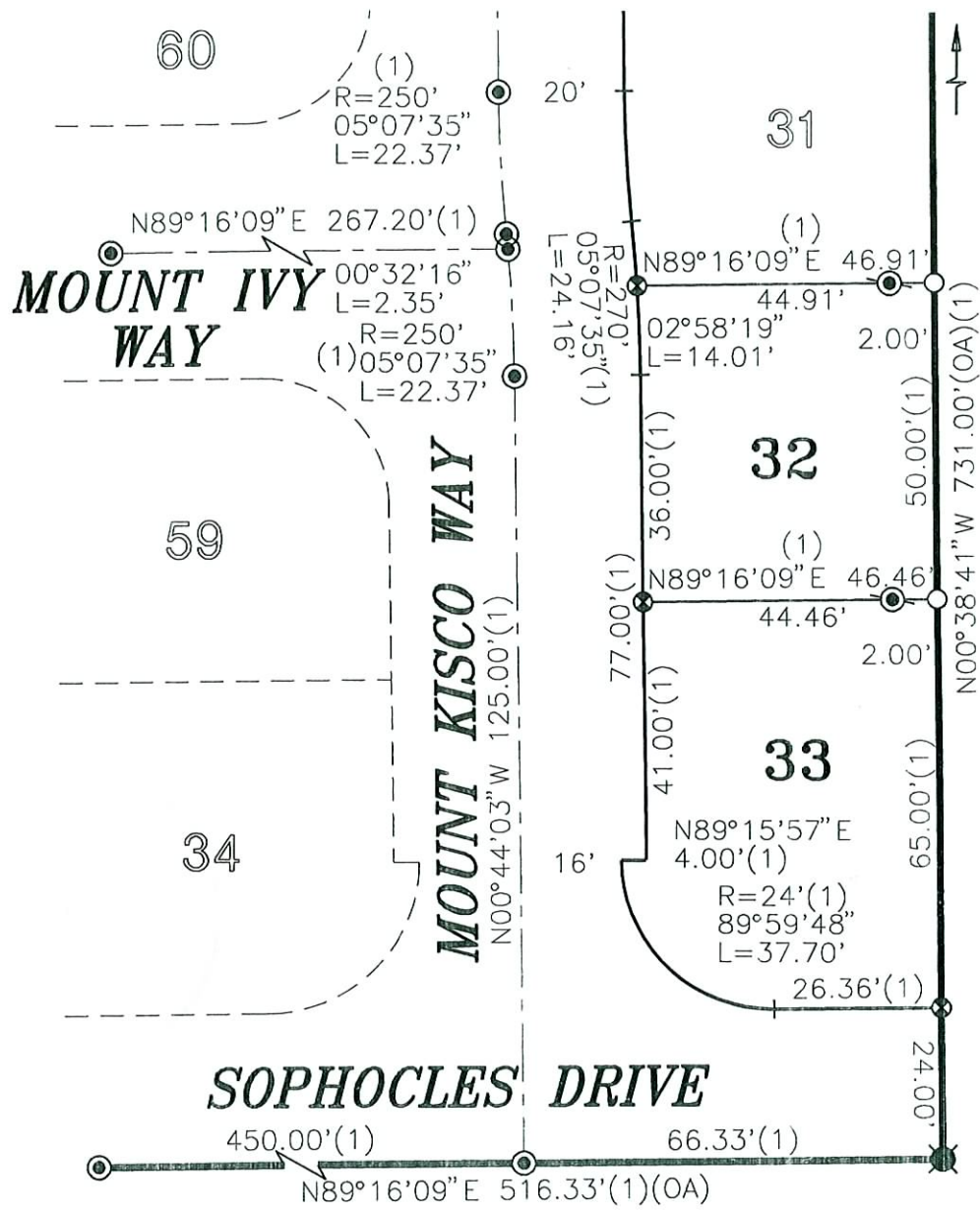
COUNTY SURVEYOR'S STATEMENT

This Corner Record was received 12/1/2005
and examined and filed 12/2/2005
Signed [Signature] P.L.S. or R.C.E. No. 7965
Title ASSOCIATE LAND SURVEYOR



County Surveyor's Comment _____

CORNER RECORD
 ANATOLIA COMMONS LOTS 29-31
 RANCHO CORDOVA
 COUNTY OF SACRAMENTO STATE OF CALIFORNIA



SCALE: 1"=30'

LEGEND:

- DIMENSION POINT
- ⊙ FOUND 3/4" IRON PIPE WITH PLUG STAMPED L.S. 7944 PER (1)
- ⊗ FOUND 1" BRASS DISK STAMPED L.S. 7944 AT 1.00' PROJECTION ONTO SIDEWALK PER (1)
- ⊙ SET 5/8" REBAR WITH PLASTIC CAP STAMPED L.S. 7944
- ⊗ FOUND 3/4" IRON PIPE WITH PLASTIC CAP STAMPED L.S. 6046
- (1) = 342 B.M. 13