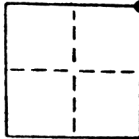


**CORNER RECORD**

COUNTY OF SACRAMENTO T. 7N R. 5E MD MERIDIAN CALIFORNIA  
 CORNER TYPE: GOVT. CORNER  MEANDER  RANCHO  CONTROL  OTHER   
 CORNER IDENTIFICATION — DATE OF VISIT DEC 19 76



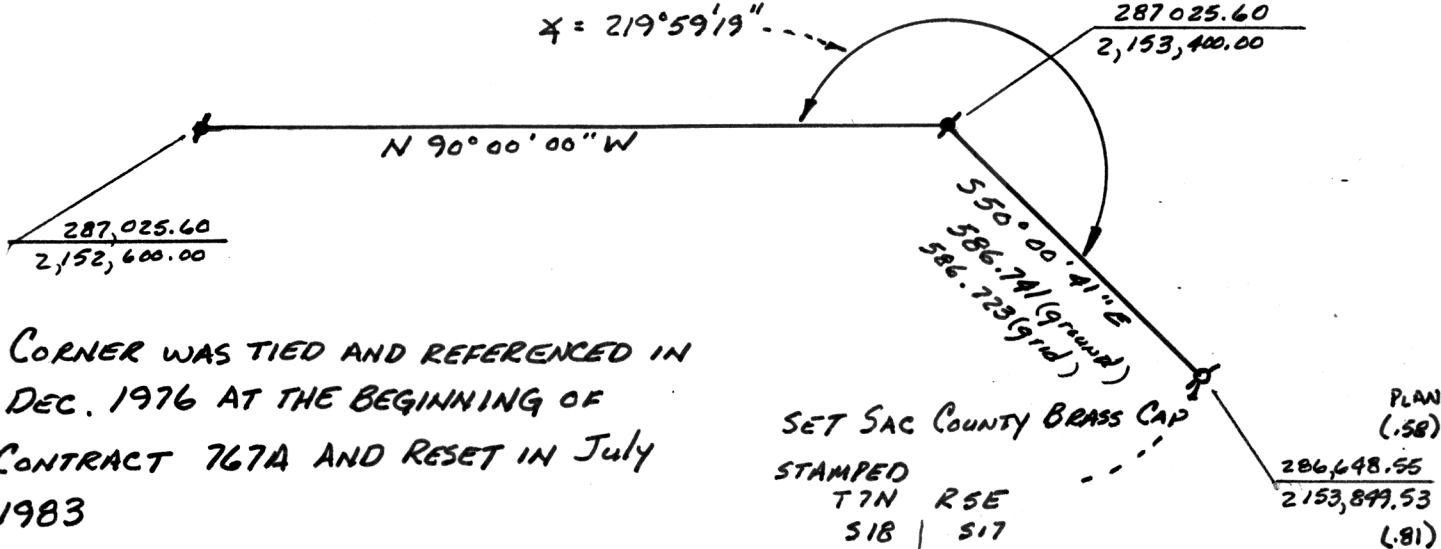
CORNER — LEFT AS FOUND  FOUND AND TAGGED  REESTABLISHED OBLITERATED CORNER  REBUILT

PHYSICAL DESCRIPTION OF CORNER FOUND; EVIDENCE AND METHOD USED TO IDENTIFY OR REESTABLISH  
FOUND 1/4 IP NO EVIDENCE OF TAG PER SAC COUNTY CONTRACT #767A  
DRAWINGS VOL D1 PG G-11

PHYSICAL DESCRIPTION OF MONUMENTS REBUILT OR PERPETUATED  
SET SAC. COUNTY PUBLIC WORKS BRASS CAP IN CONCRETE

CALIFORNIA COORDINATE SYSTEM ORDER: FIRST  SECOND  THIRD   
 STATIONS USED: NGS (USC & GS)  STATE  COUNTY  OTHER  STATION \_\_\_\_\_ STATION \_\_\_\_\_  
 ZONE \_\_\_\_\_ ELEVATION \_\_\_\_\_ NORTHINGS (Y) \_\_\_\_\_ EASTINGS (X) \_\_\_\_\_

SKETCH: (Include reference tie or witness points, remarks and topo of area)



**SURVEYOR'S CERTIFICATE**  
 THIS CORNER RECORD WAS PREPARED BY ME OR UNDER MY DIRECTION IN CONFORMANCE WITH THE LAND SURVEYORS ACT ON April 2 19 84  
 SIGNED: Robert C. Bents  
 L.S. or R.C.E. No.: 4057

**COUNTY SURVEYOR'S CERTIFICATE**  
 THE CORNER RECORD WAS RECEIVED \_\_\_\_\_ 19 \_\_\_\_\_ AND EXAMINED AND FILED \_\_\_\_\_ 19 \_\_\_\_\_  
 BY: \_\_\_\_\_  
 TITLE: \_\_\_\_\_  
 DOCUMENT No. 12  
 STATEMENT ON BACK OF SHEET YES  NO