

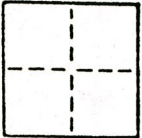
CORNER RECORD

118

COUNTY OF SACRAMENTO T. 7 R. 5 M D M MERIDIAN CALIFORNIA

CORNER TYPE: GOVT. CORNER  MEANDER  RANCHO  CONTROL  OTHER

CORNER IDENTIFICATION - DATE OF VISIT April 16 19 87



91 PM 24

CORNER - LEFT AS FOUND  FOUND AND TAGGED  REESTABLISHED OBLITERATED CORNER  REBUILT

PHYSICAL DESCRIPTION OF CORNER FOUND; EVIDENCE AND METHOD USED TO IDENTIFY OR REESTABLISH

Nothing found or set on Parcel 7, 91 PM 24. Parcel re-established by Field Survey recovery of monumentation shown on 91 PM 24 and 91 PM 25.

PHYSICAL DESCRIPTION OF MONUMENTS REBUILT OR PERPETUATED

See attached exhibit.

CALIFORNIA COORDINATE SYSTEM ORDER: FIRST  SECOND  THIRD   
STATIONS USED: NGS (USC & GS)  STATE  COUNTY  OTHER  STATION \_\_\_\_\_ STATION \_\_\_\_\_  
ZONE \_\_\_\_\_ ELEVATION \_\_\_\_\_ NORTHINGS (Y) \_\_\_\_\_ EASTINGS (X) \_\_\_\_\_

SKETCH: (Include reference tie or witness points, remarks and topo of area)

See attached exhibit.

SURVEYOR'S CERTIFICATE

THIS CORNER RECORD WAS PREPARED BY ME OR UNDER MY DIRECTION IN CONFORMANCE WITH THE LAND SURVEYORS ACT ON April 20 19 87

SIGNED: [Signature] 4967

L.S. or R.C.E. No.: 4967

SEAL

COUNTY SURVEYOR'S CERTIFICATE

THE CORNER RECORD WAS RECEIVED 4-21 19 87 AND EXAMINED AND FILED 4-24 19 87

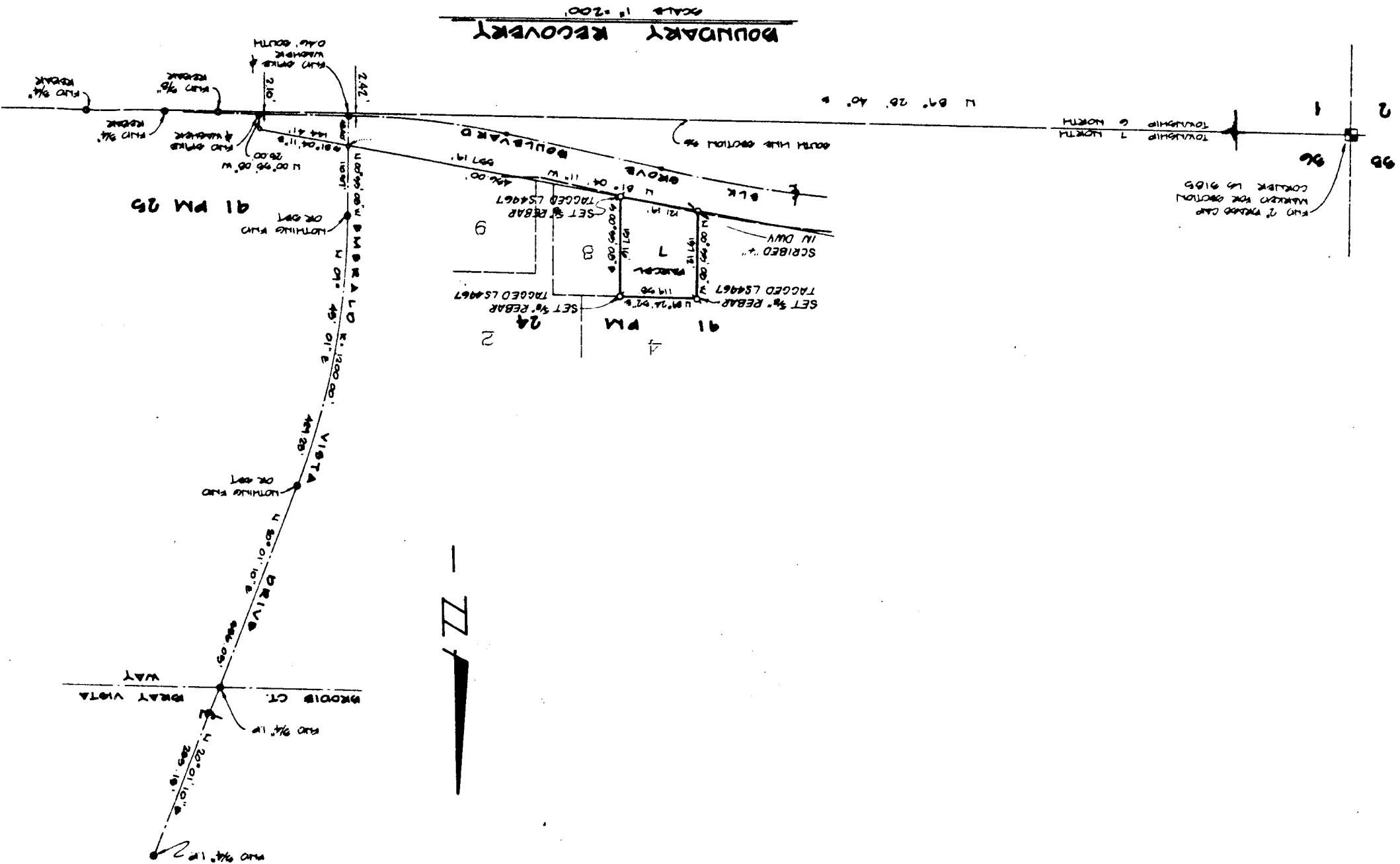
BY: D. PARKER

TITLE: Spansing Eng Tech

DOCUMENT No. 118

STATEMENT ON BACK OF SHEET

YES  NO



**CARL RODOLF & ASSOCIATES, INC.**

Civil Engineering and Surveying

EXHIBIT TO ACCOMPANY  
 CORNER RECORD FOR MONUMENTS SET  
 ON PARCEL 7, BOOK 91 OF PARCEL MAPS  
 AT PAGE 24, COUNTY OF SACRAMENTO, CALIFORNIA

5411 Madison Avenue, Suite 5 • Sacramento, California 95841 • (916) 344-2313

SHEET NO. 1 OF 1  
 BY            DATE 4/20/87  
 JOB NO. 87CH 01