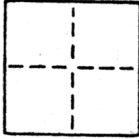


CORNER RECORD

COUNTY OF SACRAMENTO T. 10 N R. 6 E MDM MERIDIAN CALIFORNIA

CORNER TYPE: GOVT. CORNER MEANDER RANCHO CONTROL OTHER

CORNER IDENTIFICATION — DATE OF VISIT APRIL 3 1987



S.W. & S.E. CORNERS OF LOT 36 OF "BROOK TREE NORTH"
58 BM 14

CORNER — LEFT AS FOUND FOUND AND TAGGED REESTABLISHED OBLITERATED CORNER REBUILT

PHYSICAL DESCRIPTION OF CORNER FOUND; EVIDENCE AND METHOD USED TO IDENTIFY OR REESTABLISH

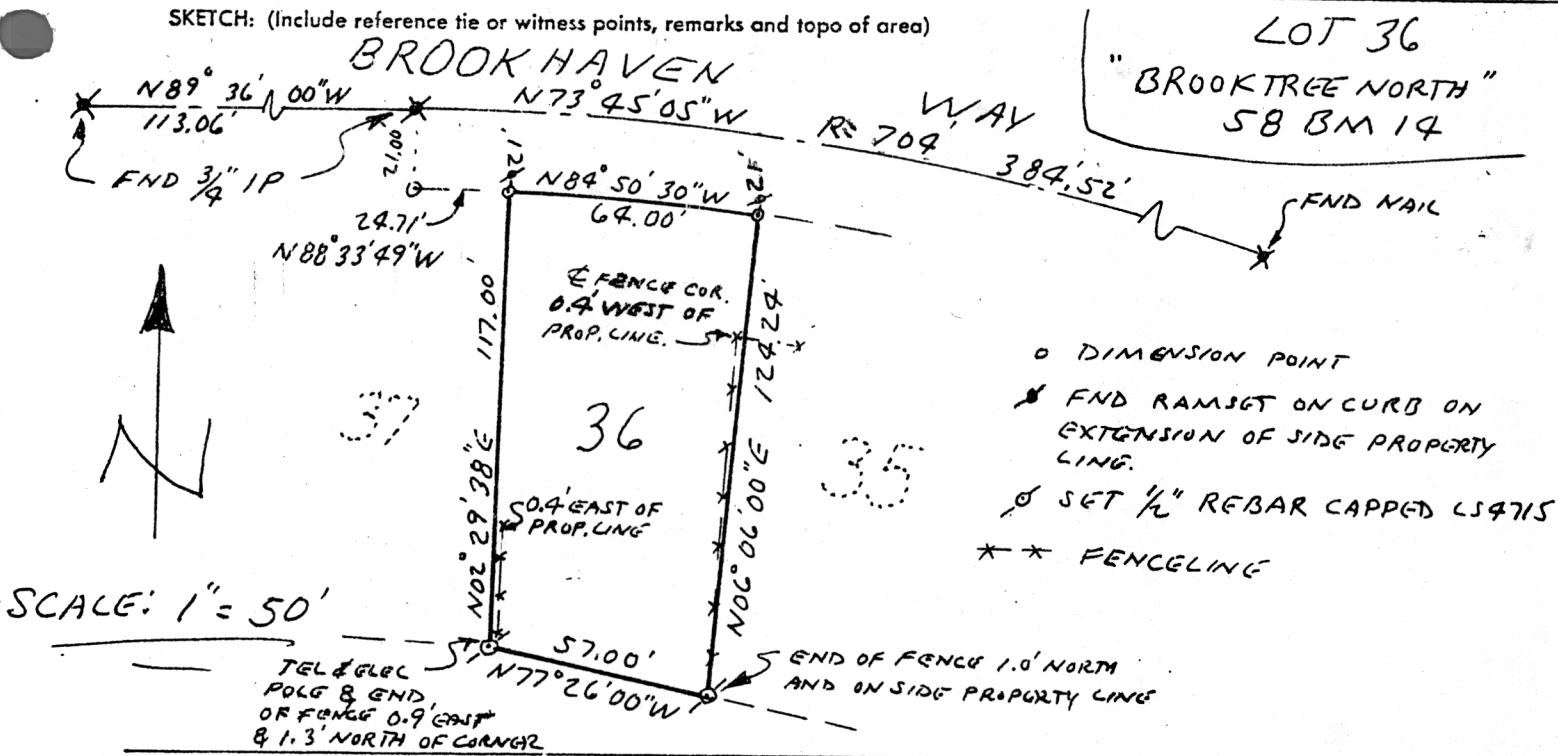
STANDARD SUBDIVISION CONTROL

PHYSICAL DESCRIPTION OF MONUMENTS REBUILT OR PERPETUATED

1/2" REBAR CAPPED LS 4715

CALIFORNIA COORDINATE SYSTEM ORDER: FIRST SECOND THIRD
 STATIONS USED: NGS (USC & GS) STATE COUNTY OTHER STATION _____
 ZONE _____ ELEVATION _____ NORTHINGS (Y) _____ EASTINGS (X) _____

SKETCH: (Include reference tie or witness points, remarks and topo of area)



SURVEYOR'S CERTIFICATE

THIS CORNER RECORD WAS PREPARED BY ME OR UNDER MY DIRECTION IN CONFORMANCE WITH THE LAND SURVEYORS ACT ON APRIL 3 1987

SIGNED: William F. McKinney
L.S. or R.C.E. No.: LS 4715

COUNTY SURVEYOR'S CERTIFICATE

THE CORNER RECORD WAS RECEIVED APRIL 8 1987 AND EXAMINED AND FILED APRIL 9 1987

BY: D. PARKER
TITLE: Supervising Eng. Tech

DOCUMENT No. 117

STATEMENT ON BACK OF SHEET

YES NO

