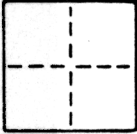


CORNER RECORD

COUNTY OF SACRAMENTO T. 8N R. 5E MT. DIABLO MERIDIAN CALIFORNIA

CORNER TYPE: GOVT. CORNER MEANDER RANCHO CONTROL OTHER

CORNER IDENTIFICATION — DATE OF VISIT JAN 29 1985



THE S.W. & S.E. CORNERS, AND WITNESS CORNERS TO THE N.E. & N.W. CORNERS OF LOT 62 OF TERMINAL TRACT

CORNER — LEFT AS FOUND FOUND AND TAGGED REESTABLISHED OBLITERATED CORNER REBUILT

PHYSICAL DESCRIPTION OF CORNER FOUND; EVIDENCE AND METHOD USED TO IDENTIFY OR REESTABLISH

CORNERS WERE ESTABLISHED USING CITY SWING TIES AND RECORD INFORMATION PER "PLAT OF TERMINAL TRACT" FILED NOVEMBER 12, 1910 IN BOOK 11 OF MAPS PAGE 14, SACRAMENTO COUNTY RECORDS.

PHYSICAL DESCRIPTION OF MONUMENTS REBUILT OR PERPETUATED

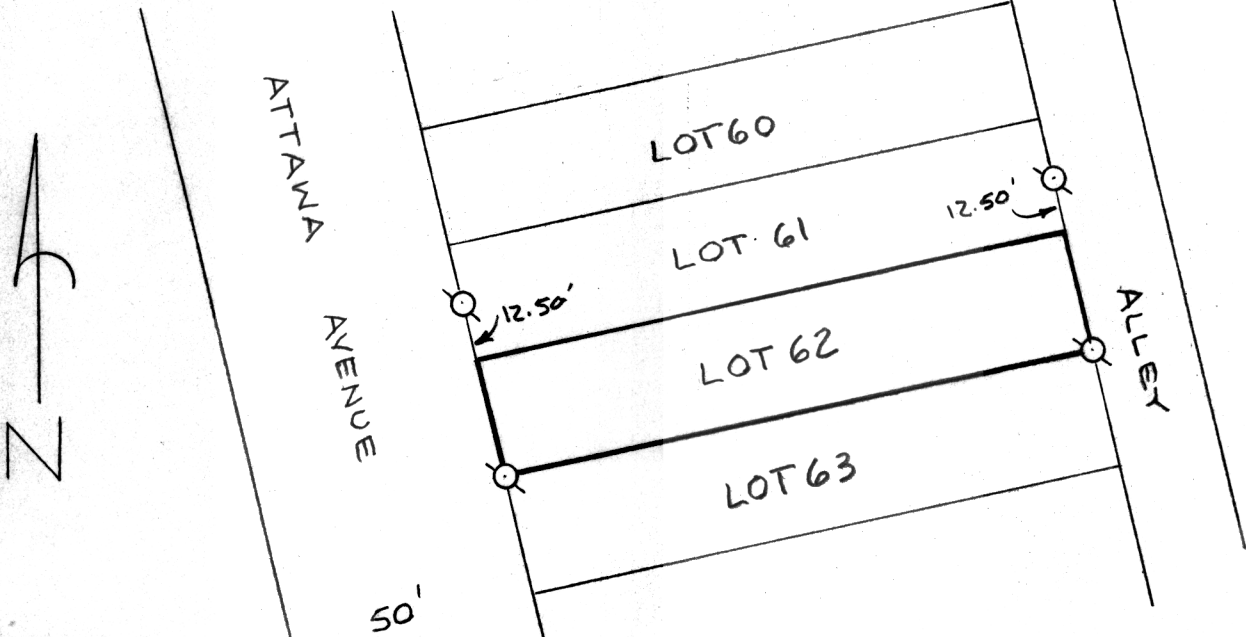
1/4" O.D. IRON PIPE MONUMENTS WITH TAG "L.S. 2457" WERE SET AS SHOWN ON SKETCH.

CALIFORNIA COORDINATE SYSTEM ORDER: FIRST SECOND THIRD

STATIONS USED: NGS (USC & GS) STATE COUNTY OTHER STATION _____ STATION _____

ZONE _____ ELEVATION _____ NORTHINGS (Y) _____ EASTINGS (X) _____

SKETCH: (Include reference tie or witness points, remarks and topo of area)



Q SET 1/4" O.D. IRON PIPE TAGGED "LS 2457"

NO. 8501-13

SURVEYOR'S CERTIFICATE

CORNER RECORD WAS PREPARED BY ME OR UNDER MY DIRECTION IN CONFORMANCE WITH THE LAND SURVEYORS ACT
FEBRUARY 6 1987

SIGNED: Timothy S. Train
 R.C.E. No.: LS 2457

COUNTY SURVEYOR'S CERTIFICATE

THE CORNER RECORD WAS RECEIVED MARCH 18 1987
 AND EXAMINED AND FILED MARCH 19 1987

BY: D. PARKER
 TITLE: SUPERVISING ENGR. TECH

DOCUMENT No. 116

STATEMENT ON BACK OF SHEET

YES NO

SEAL

