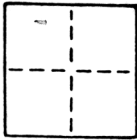


CORNER RECORD

COUNTY OF SACRAMENTO T. 8N. R. 5E. MT. DIABLO MERIDIAN CALIFORNIA

CORNER TYPE: GOVT. CORNER MEANDER RANCHO CONTROL OTHER

CORNER IDENTIFICATION — DATE OF VISIT DECEMBER 6, 1984



THE SE CORNER OF LOT 1820 OF PARK TERRACE

CORNER — LEFT AS FOUND FOUND AND TAGGED REESTABLISHED OBLITERATED CORNER REBUILT

PHYSICAL DESCRIPTION OF CORNER FOUND; EVIDENCE AND METHOD USED TO IDENTIFY OR REESTABLISH

CORNER WAS ESTABLISHED USING CITY SWING TIES AND RECORD INFORMATION PER "PLAT OF PARK TERRACE" FILED MAY 15, 1904 IN BOOK 5 OF MAPS MAP NO. 43 SACRAMENTO COUNTY RECORDS.

PHYSICAL DESCRIPTION OF MONUMENTS REBUILT OR PERPETUATED

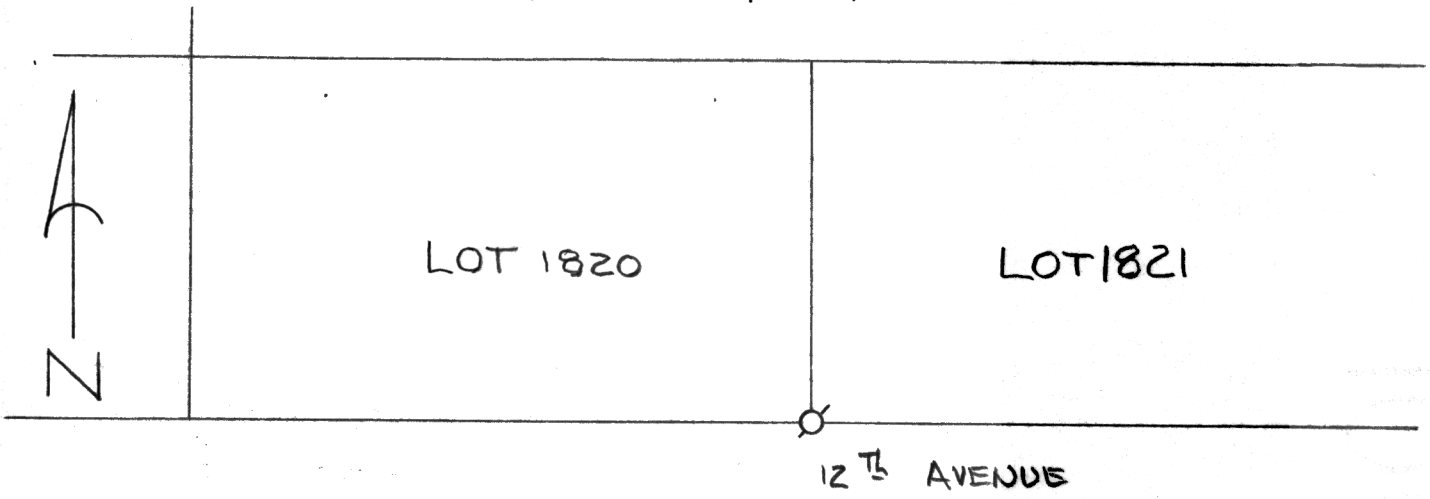
1" I.D. IRON PIPE MONUMENT WITH TAG "L.S. 2457" SET AS SHOWN ON SKETCH.

CALIFORNIA COORDINATE SYSTEM ORDER: FIRST SECOND THIRD

STATIONS USED: NGS (USC & GS) STATE COUNTY OTHER STATION _____ STATION _____

ZONE _____ ELEVATION _____ NORTHINGS (Y) _____ EASTINGS (X) _____

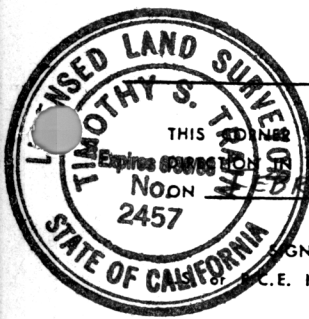
SKETCH: (Include reference tie or witness points, remarks and topo of area)



○ SET 1" I.D. IRON PIPE TAGGED L.S. 2457

LISSETTA AVENUE

W.O. 8411-09



SURVEYOR'S CERTIFICATE

THIS CORNER RECORD WAS PREPARED BY ME OR UNDER MY SUPERVISION IN CONFORMANCE WITH THE LAND SURVEYORS ACT

SIGNED: Timothy S. Taylor
C.E. No.: LS 2457

SEAL

COUNTY SURVEYOR'S CERTIFICATE

THE CORNER RECORD WAS RECEIVED MARCH 18, 1987 AND EXAMINED AND FILED MARCH 19, 1987

BY: D. PARKER
TITLE: SUPERVISING ENG. TECH

DOCUMENT No. 115

STATEMENT ON BACK OF SHEET

YES NO