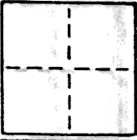


# CORNER RECORD

COUNTY OF SACRAMENTO T. \_\_\_\_\_ R. MT. DIABLO MERIDIAN CALIFORNIA

CORNER TYPE: GOVT. CORNER  MEANDER  RANCHO  CONTROL  OTHER

CORNER IDENTIFICATION — DATE OF VISIT NOVEMBER 6 1984



THE N.E.ly & N.W.ly CORNERS OF LOT 10 BLOCK 30 NORTH SACRAMENTO SUBDIVISION NO. 8

CORNER — LEFT AS FOUND  FOUND AND TAGGED  REESTABLISHED OBLITERATED CORNER  REBUILT

PHYSICAL DESCRIPTION OF CORNER FOUND; EVIDENCE AND METHOD USED TO IDENTIFY OR REESTABLISH

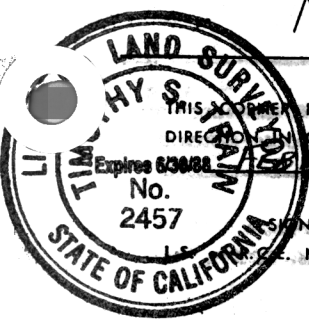
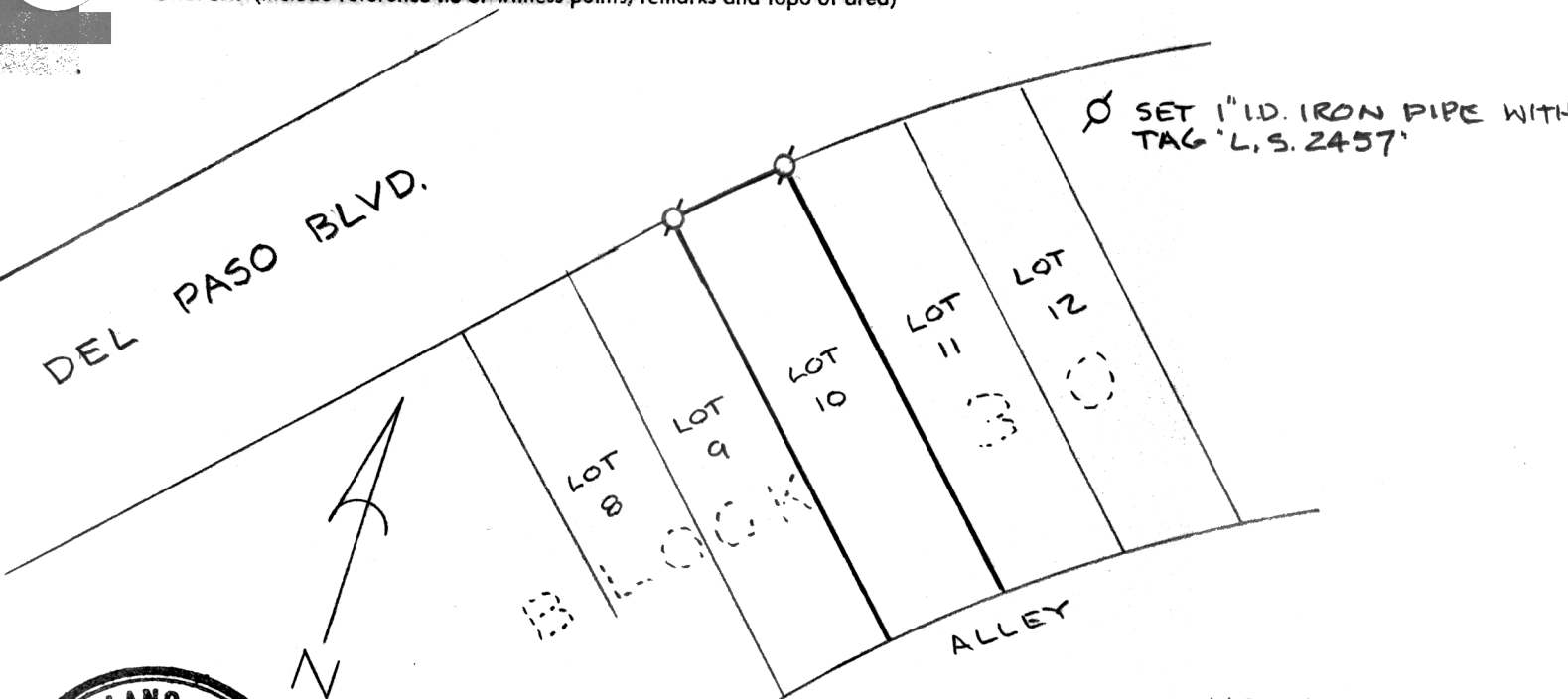
CORNERS WERE ESTABLISHED USING FOUND MONUMENTS, IMPROVEMENTS AND RECORD INFORMATION PER "PLAT OF NORTH SACRAMENTO SUB-DIVISION NO. 8" FILED MARCH 26, 1913 IN BOOK 13 OF MAPS, MAP NO 49, SACRAMENTO COUNTY RECORDS.

PHYSICAL DESCRIPTION OF MONUMENTS REBUILT OR PERPETUATED

1" I.D. IRON PIPE MONUMENTS WITH TAG "L.S. 2457" WERE SET AS SHOWN ON SKETCH.

CALIFORNIA COORDINATE SYSTEM ORDER: FIRST  SECOND  THIRD   
 STATIONS USED: NGS (USC & GS)  STATE  COUNTY  OTHER  STATION \_\_\_\_\_ STATION \_\_\_\_\_  
 ZONE \_\_\_\_\_ ELEVATION \_\_\_\_\_ NORTHINGS (Y) \_\_\_\_\_ EASTINGS (X) \_\_\_\_\_

SKETCH: (Include reference tie or witness points, remarks and topo of area)



**SURVEYOR'S CERTIFICATE**  
 THIS CORNER RECORD WAS PREPARED BY ME OR UNDER MY DIRECTION IN CONFORMANCE WITH THE LAND SURVEYORS ACT  
 FEBRUARY 6, 1987  
 BY: Jimmy S. Hy  
 No.: LS2457

W.D. 9,411-03

**COUNTY SURVEYOR'S CERTIFICATE**  
 THE CORNER RECORD WAS RECEIVED MARCH 18, 1987  
 AND EXAMINED AND FILED MARCH 19, 1987  
 BY: D. PARKER  
 TITLE: SUPERVISING ENG. TECH  
 DOCUMENT No. 114  
 STATEMENT ON BACK OF SHEET YES  NO

SEAL