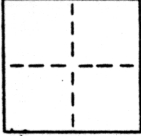


CORNER RECORD

COUNTY OF Sacramento T. _____ R. _____ MERIDIAN CALIFORNIA

CORNER TYPE: GOV'T. CORNER MEANDER RANCHO CONTROL OTHER Property Corner
 CORNER IDENTIFICATION - DATE OF VISIT March 3, 19 87



ROBLA ACRES BLOCK 9 LOT 4

CORNER - LEFT AS FOUND FOUND AND TAGGED REESTABLISHED OBLITERATED CORNER REBUILT

PHYSICAL DESCRIPTION OF CORNER FOUND: EVIDENCE AND METHOD USED TO IDENTIFY OR REESTABLISH _____

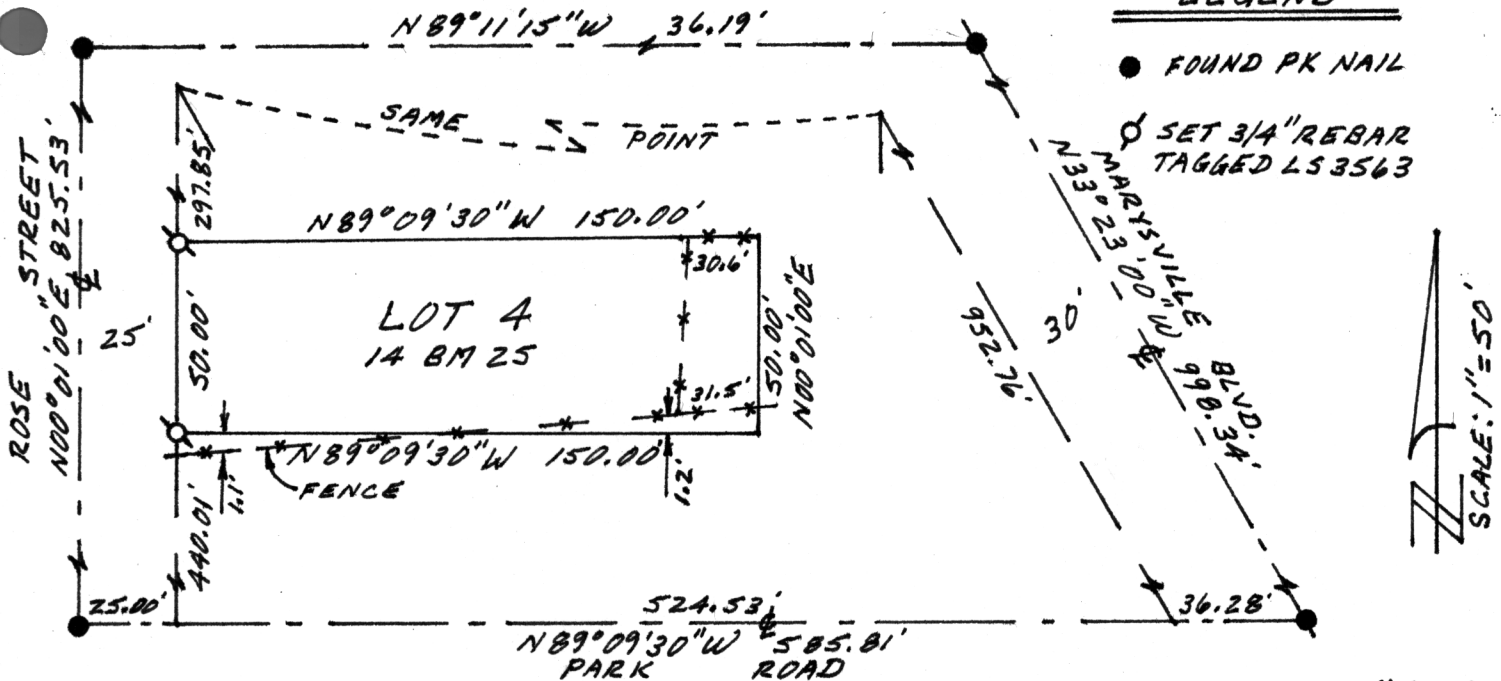
Found PK nails as shown in sketch.

PHYSICAL DESCRIPTION OF MONUMENTS REBUILT OR PERPETUATED _____

Set 3/4" Rebar Tagged LS 3563 at the NW and SW corners of Lot 4 (14 BM 25) and located fence lines.

CALIFORNIA COORDINATE SYSTEM ORDER: FIRST SECOND THIRD
 STATIONS USED: NGS (USC & GS) STATE COUNTY OTHER STATION _____ STATION _____
 ZONE _____ ELEVATION _____ NORTHINGS (Y) _____ EASTINGS (X) _____

SKETCH: (Include reference tie or witness points, remarks and topo of area)



SURVEYOR'S CERTIFICATE

THIS CORNER RECORD WAS PREPARED BY ME OR UNDER MY DIRECTION IN CONFORMANCE WITH THE LAND SURVEYORS ACT
 March 19 87

SIGNED: Lloyd C. Parker
 E. No.: LS 3563

SEAL

COUNTY SURVEYOR'S CERTIFICATE

THIS CORNER RECORD WAS RECEIVED 3-4 1987
 AND EXAMINED AND FILED 3-11 1987

BY: D. PARKER
 TITLE: SUPERVISING ENG. TECH

DOCUMENT No. 113

STATEMENT ON BACK OF SHEET

YES NO

