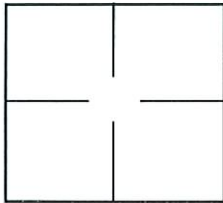


# CORNER RECORD

Document Number 1119  
 City of Elk Grove County of Sacramento, California  
 Brief Legal Description Centerline of intersection at Ranch Park Drive and Sharkey Avenue -  
Plat of Williamson Ranch Unit no.3 ( 138 BM 8 )

**CORNER TYPE**

**COORDINATES (Optional)**



Government Corner  Control   
 Meander  Property   
 Rancho  Other   
 Date of Survey 9/15/2003

N. \_\_\_\_\_  
 E. \_\_\_\_\_  
 Zone \_\_\_\_\_ NAD27  NAD83   
 NAD83 Epoch \_\_\_\_\_  
 Elev. \_\_\_\_\_  
 Vert. Datum: NGVD29  NADV88   
 Meas. Units: Metric  Imperial

**Corner -** Left as found  Found and tagged  Established  Reestablished  Rebuilt

Identification and type of corner found: Evidence used to identify or procedure used to establish or reestablish the corner:  
Found 3/4" Iron Pipe, No tag prior to overlay.

A description of the physical condition of the monument as found and as set or reset: Set 3 reference points for found 3/4"  
Iron Pipe.

**SURVEYOR'S STATEMENT**

This Corner Record was prepared by me or under my direction in conformance with  
 the Land Surveyor's Act on Feb. 5, 2004.  
 Signed Robert H. Blaser P.L.S. or R.C.E. No.: 30232



**COUNTY SURVEYOR'S STATEMENT**

This Corner Record was received 4/7, 2004 and examined  
 and filed 11/9, 2009.  
 Signed [Signature] P.L.S. or R.C.E. No.: LS 7965  
 Title ASSOC. G.S.

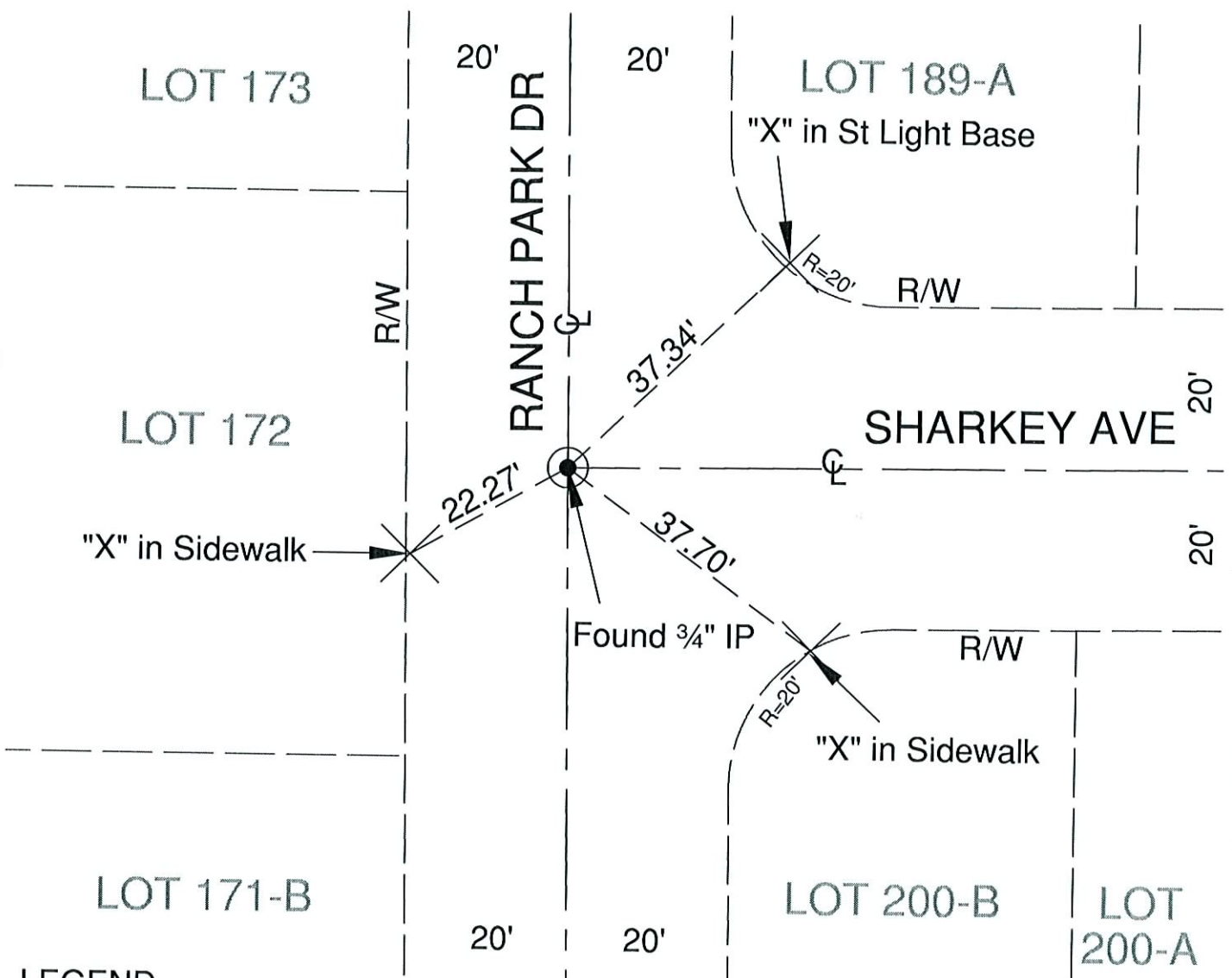


**County Surveyor's Comment**

\_\_\_\_\_  
 \_\_\_\_\_  
 \_\_\_\_\_  
 \_\_\_\_\_



No Scale



**LEGEND**

- ⊙ FOUND 3/4" IRON PIPE, NO TAG PER 138 B.M. 8
- ✕ SCRIBED "X" IN CONCRETE AS NOTED