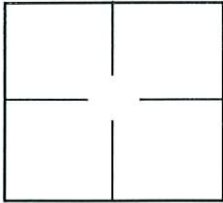


# CORNER RECORD

Document Number 1109  
 City of Elk Grove County of Sacramento, California  
 Brief Legal Description Centerline West of intersection of Via Media Way and Vista Grande Way-  
 Plat of Via Verde Unit no.1 ( 113 BM 12 )

### CORNER TYPE

### COORDINATES (Optional)



Government Corner  Control   
 Meander  Property   
 Rancho  Other   
 Date of Survey 9/17/2003

N. \_\_\_\_\_  
 E. \_\_\_\_\_  
 Zone \_\_\_\_\_ NAD27  NAD83   
 NAD83 Epoch \_\_\_\_\_  
 Elev. \_\_\_\_\_  
 Vert. Datum: NGVD29  NADV88   
 Meas. Units: Metric  Imperial

Corner - Left as found  Found and tagged  Established  Reestablished  Rebuilt

Identification and type of corner found: Evidence used to identify or procedure used to establish or reestablish the corner:

Found 3/4" Iron Pipe, No tag prior to overlay.

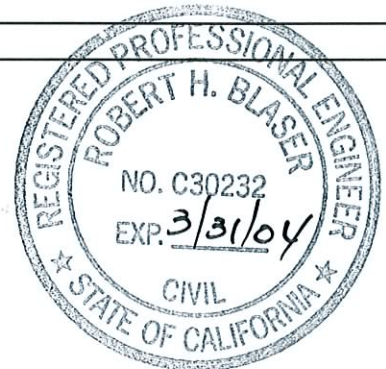
A description of the physical condition of the monument as found and as set or reset:  
Iron Pipe.

Set 3 reference points for found 3/4"

### SURVEYOR'S STATEMENT

This Corner Record was prepared by me or under my direction in conformance with  
 the Land Surveyor's Act on Feb. 5, 2004.

Signed Robert H. Blaser P.L.S. or R.C.E. No.: 30232



### COUNTY SURVEYOR'S STATEMENT

This Corner Record was received 4/7, 2004 and examined  
 and filed 11/9, 2009.

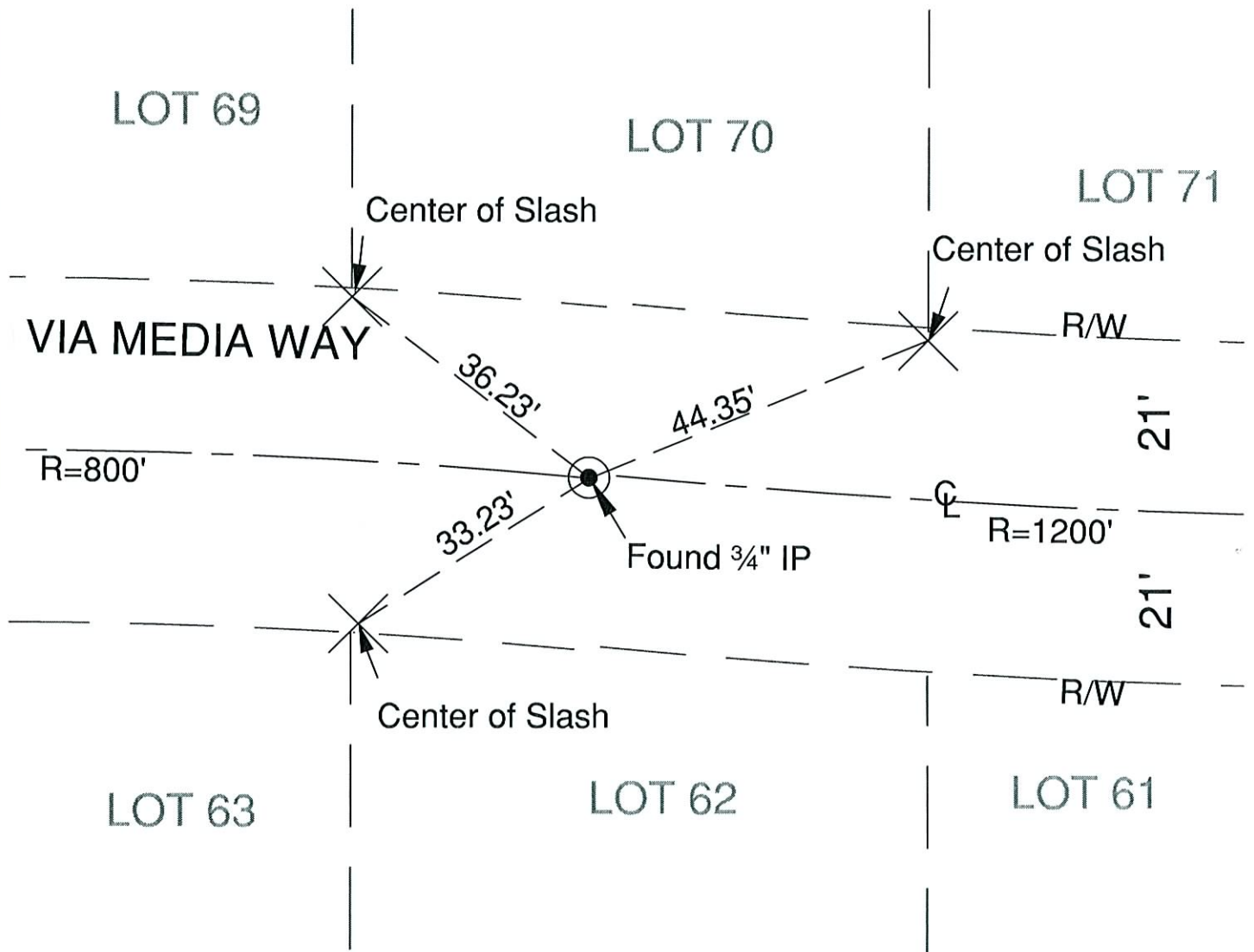
Signed [Signature] P.L.S. or R.C.E. No.: LS 7965  
 Title ASSOC. L.S.



### County Surveyor's Comment



No Scale



**LEGEND**

● FOUND 3/4" IRON PIPE, NO TAG  
PER 113 BM 12

✕ SCRIBE IN CONCRETE  
AS NOTED