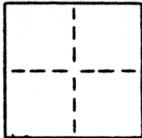


**CORNER RECORD**

COUNTY OF Sacramento T. \_\_\_\_\_ R. \_\_\_\_\_ MERIDIAN \_\_\_\_\_ CALIFORNIA

CORNER TYPE: GOV'T. CORNER  MEANDER  RANCHO  CONTROL  OTHER  Property Corner  
 CORNER IDENTIFICATION - DATE OF VISIT February 11, 19 87



*RIVER ROCK LOTS 6 & 7*

CORNER - LEFT AS FOUND  FOUND AND TAGGED  REESTABLISHED OBLITERATED CORNER  REBUILT

PHYSICAL DESCRIPTION OF CORNER FOUND: EVIDENCE AND METHOD USED TO IDENTIFY OR REESTABLISH \_\_\_\_\_

Found 5/8" rebar with plastic cap, stamped LS 3852 per 128 BM 4 in centerline of River Rock Drive.

PHYSICAL DESCRIPTION OF MONUMENTS REBUILT OR PERPETUATED \_\_\_\_\_

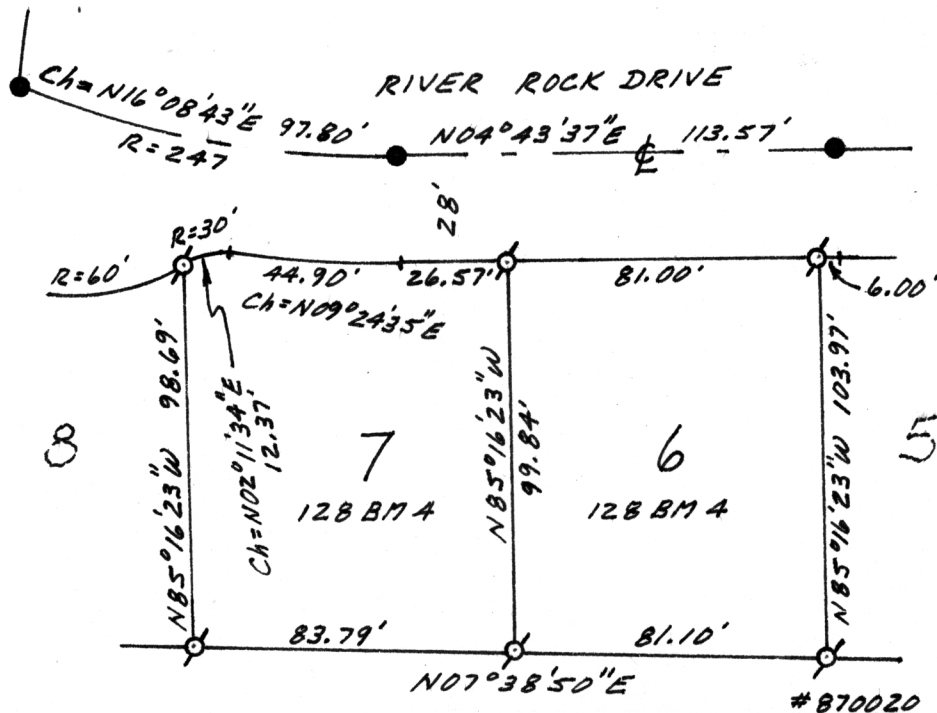
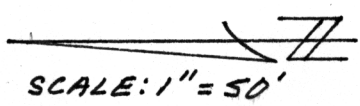
Set corners of Lots 6 and 7 (128 BM 4) as shown in sketch.

CALIFORNIA COORDINATE SYSTEM ORDER: FIRST  SECOND  THIRD   
 STATIONS USED: NGS (USC & GS)  STATE  COUNTY  OTHER  STATION \_\_\_\_\_ STATION \_\_\_\_\_  
 ZONE \_\_\_\_\_ ELEVATION \_\_\_\_\_ NORTHINGS (Y) \_\_\_\_\_ EASTINGS (X) \_\_\_\_\_

SKETCH: (Include reference tie or witness points, remarks and topo of area)

**LEGEND**

- FOUND 5/8" REBAR W/  
PLASTIC CAP LS 3852
- ⊕ SET 3/4" REBAR TAGGED  
LS 3563



**SURVEYOR'S CERTIFICATE**

THIS CORNER RECORD WAS PREPARED BY ME OR UNDER MY DIRECTION IN CONFORMANCE WITH THE LAND SURVEYORS ACT  
 February 19 87

SIGNED: Lloyd C. Parker  
 L.S. 3563

SEAL

**COUNTY SURVEYOR'S CERTIFICATE**

THIS CORNER RECORD WAS RECEIVED 2-27 1987  
 AND EXAMINED AND FILED 2-27 1987

BY: D. PARKER  
 TITLE: SUPERVISING ENG TECH

DOCUMENT No. 110

STATEMENT ON BACK OF SHEET

YES  NO

