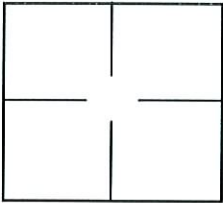


CORNER RECORD

Document Number 1099
City of Elk Grove County of Sacramento, California
Brief Legal Description Centerline of intersection at Worcester Way and South Wales Way -
Plat of Valley Hi Greens (80 BM 26)

CORNER TYPE

COORDINATES (Optional)



Government Corner Control
Meander Property
Rancho Other
Date of Survey 9/17/2003

N. _____
E. _____
Zone _____ NAD27 NAD83
NAD83 Epoch _____
Elev. _____
Vert. Datum: NGVD29 NADV88
Meas. Units: Metric Imperial

Corner - Left as found Found and tagged Established Reestablished Rebuilt

Identification and type of corner found: Evidence used to identify or procedure used to establish or reestablish the corner:

Found 3/4" Iron Pipe, No tag prior to overlay.

A description of the physical condition of the monument as found and as set or reset:

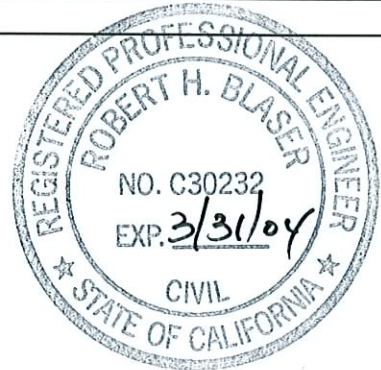
Iron Pipe.

Set 3 reference points for found 3/4"

SURVEYOR'S STATEMENT

This Corner Record was prepared by me or under my direction in conformance with the Land Surveyor's Act on Feb. 5, 2004.

Signed Robert H. Blaser P.L.S. or R.C.E. No.: 30232



COUNTY SURVEYOR'S STATEMENT

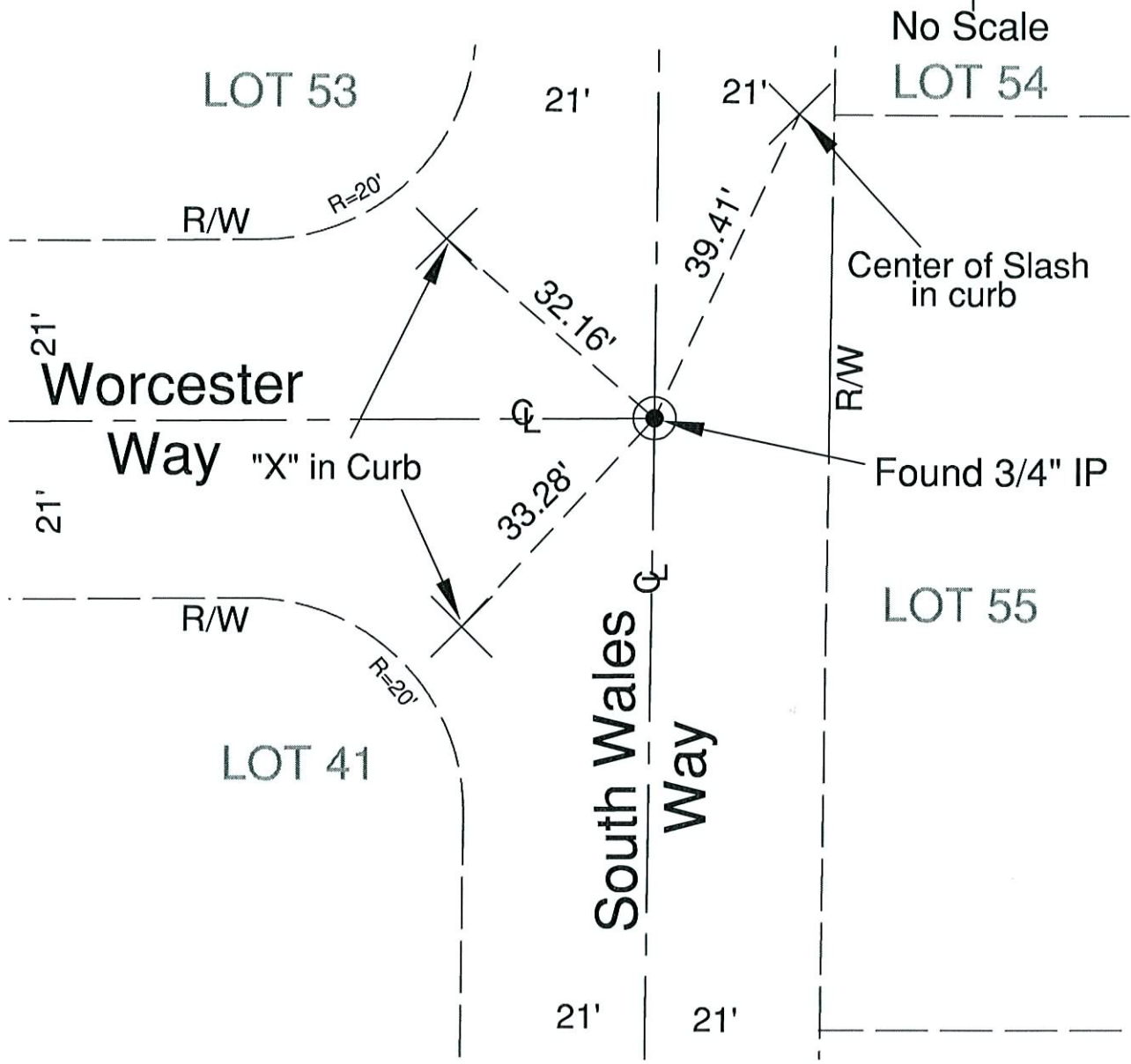
This Corner Record was received 4/7, 2004 and examined and filed 11/9, 2009.

Signed Larry S. Savio P.L.S. or R.C.E. No.: _____

Title ASSOC. L.S.

County Surveyor's Comment





LEGEND

- ⊙ FOUND 3/4" IRON PIPE, NO TAG
PER 80 B.M. 26
- ✕ SCRIBED "X" OR SLASH IN CONCRETE
AS NOTED