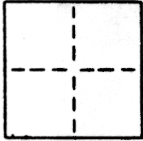


Parkside #4

CORNER RECORD

COUNTY OF Sacramento T. _____ R. _____ MERIDIAN _____ CALIFORNIA

CORNER TYPE: GOV'T. CORNER MEANDER RANCHO CONTROL OTHER Property Corner
CORNER IDENTIFICATION - DATE OF VISIT February 18, 1987



PARKSIDE #4 LOT 19

CORNER - LEFT AS FOUND FOUND AND TAGGED REESTABLISHED OBLITERATED CORNER REBUILT

PHYSICAL DESCRIPTION OF CORNER FOUND: EVIDENCE AND METHOD USED TO IDENTIFY OR REESTABLISH _____

Found 3/4" iron pipe per 108 BM 23 in centerline of Summer Water Circle.

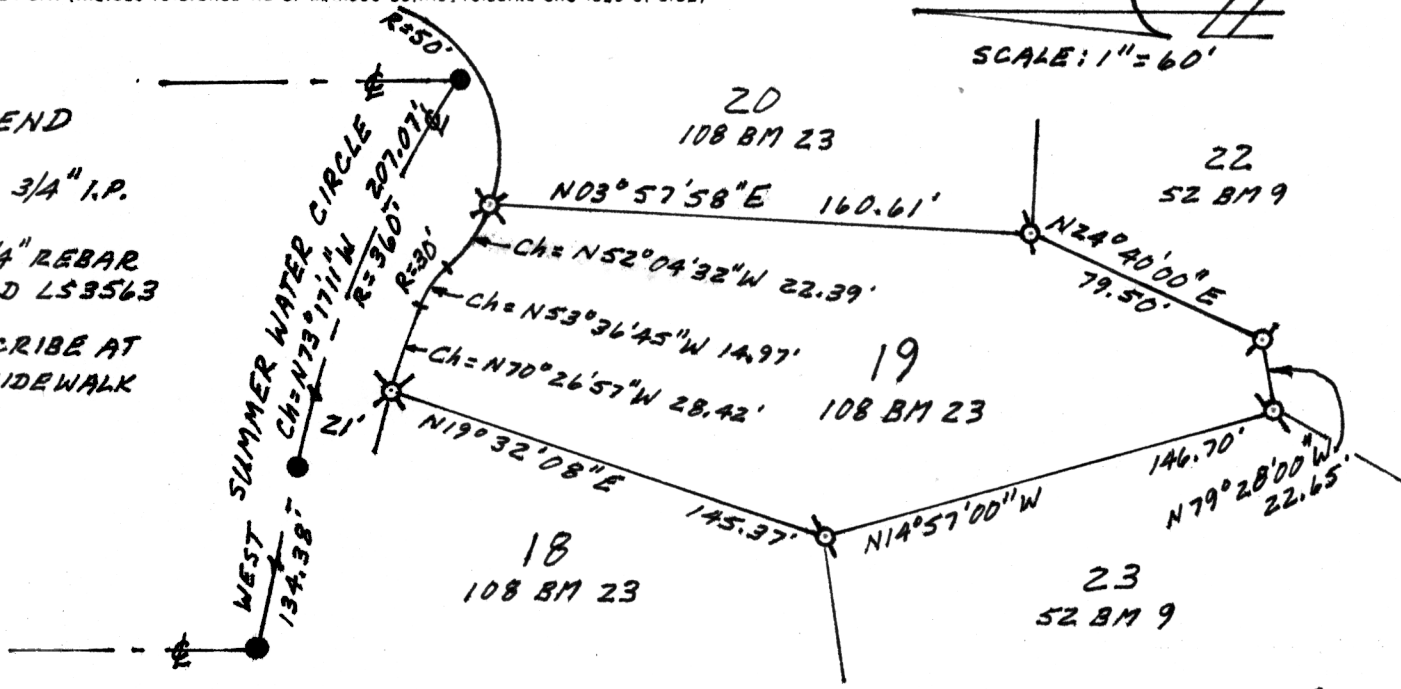
PHYSICAL DESCRIPTION OF MONUMENTS REBUILT OR PERPETUATED _____

Set corners of Lot 19 (108 BM 23) as shown in sketch

CALIFORNIA COORDINATE SYSTEM ORDER: FIRST SECOND THIRD
STATIONS USED: NGS (USC & GS) STATE COUNTY OTHER STATION _____ STATION _____
ZONE _____ ELEVATION _____ NORTHINGS (Y) _____ EASTINGS (X) _____

SKETCH: (Include reference tie or witness points, remarks and topo of area)

- LEGEND**
- FOUND 3/4" I.P.
 - ⊕ SET 3/4" REBAR TAGGED LS3563
 - ⊗ SET SCRIBE AT BACK SIDEWALK



870019

SURVEYOR'S CERTIFICATE

THIS CORNER RECORD WAS PREPARED BY ME OR UNDER MY DIRECTION IN CONFORMANCE WITH THE LAND SURVEYORS ACT
February 19 87



SIGNED: Lloyd C. Parker
No.: L.S. 3563

SEAL

COUNTY SURVEYOR'S CERTIFICATE

THIS CORNER RECORD WAS RECEIVED 2-27 1987
AND EXAMINED AND FILED 2-27 1987

BY: D. PARKER
TITLE: SUPERVISING ENG. TECH

DOCUMENT No. 109

STATEMENT ON BACK OF SHEET

YES NO