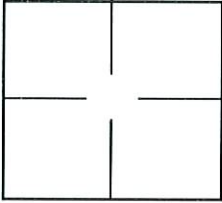


CORNER RECORD

City of Elk Grove Document Number 1089
 County of Sacramento, California
 Brief Legal Description Centerline East of intersection at Lujan Way and Elk Way - Terra Linda Unit no.1(88 BM 11)

CORNER TYPE

COORDINATES (Optional)



Government Corner Control
 Meander Property
 Rancho Other
 Date of Survey 9/16/2003

N. _____
 E. _____
 Zone _____ NAD27 NAD83
 NAD83 Epoch _____
 Elev. _____
 Vert. Datum: NGVD29 NADV88
 Meas. Units: Metric Imperial

Corner - Left as found Found and tagged Established Reestablished Rebuilt

Identification and type of corner found: Evidence used to identify or procedure used to establish or reestablish the corner:
Found 3/4" Iron Pipe, No tag prior to overlay.

A description of the physical condition of the monument as found and as set or reset: Set 3 reference points for found 3/4" Iron Pipe.

SURVEYOR'S STATEMENT

This Corner Record was prepared by me or under my direction in conformance with the Land Surveyor's Act on Feb. 5, 2004.
 Signed Robert H. Blaser P.L.S. or R.C.E. No.: 30232



COUNTY SURVEYOR'S STATEMENT

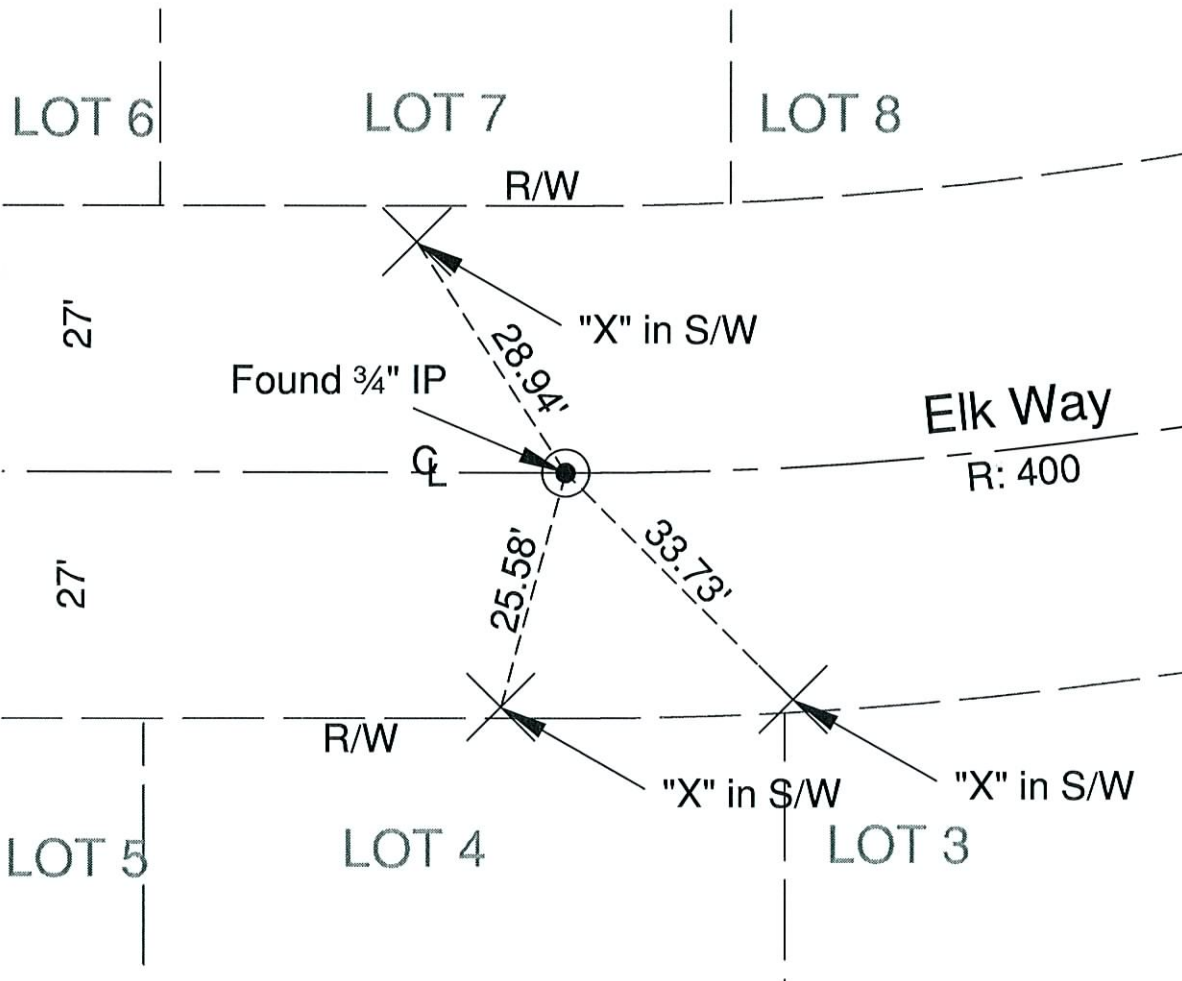
This Corner Record was received 4/7, 2004 and examined and filed 11/9, 2009.
 Signed Larry S. Savio P.L.S. or R.C.E. No.: LS 7965
 Title ASSOC. L.S.



County Surveyor's Comment



No Scale



LEGEND

⊙ FOUND 3/4" IRON PIPE, NO TAG
PER 88 B.M. 11

✕ SCRIBED "X" IN CONCRETE AS
NOTED