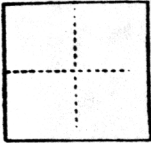


CORNER RECORD

COUNTY OF Sacramento T. _____ R. _____ MERIDIAN _____ CALIFORNIA

CORNER TYPE: GOVT. CORNER MEANDER RANCHO CONTROL OTHER

CORNER IDENTIFICATION — DATE OF VISIT _____ 19____



LOT 14 PROFESSIONAL VILLAGE

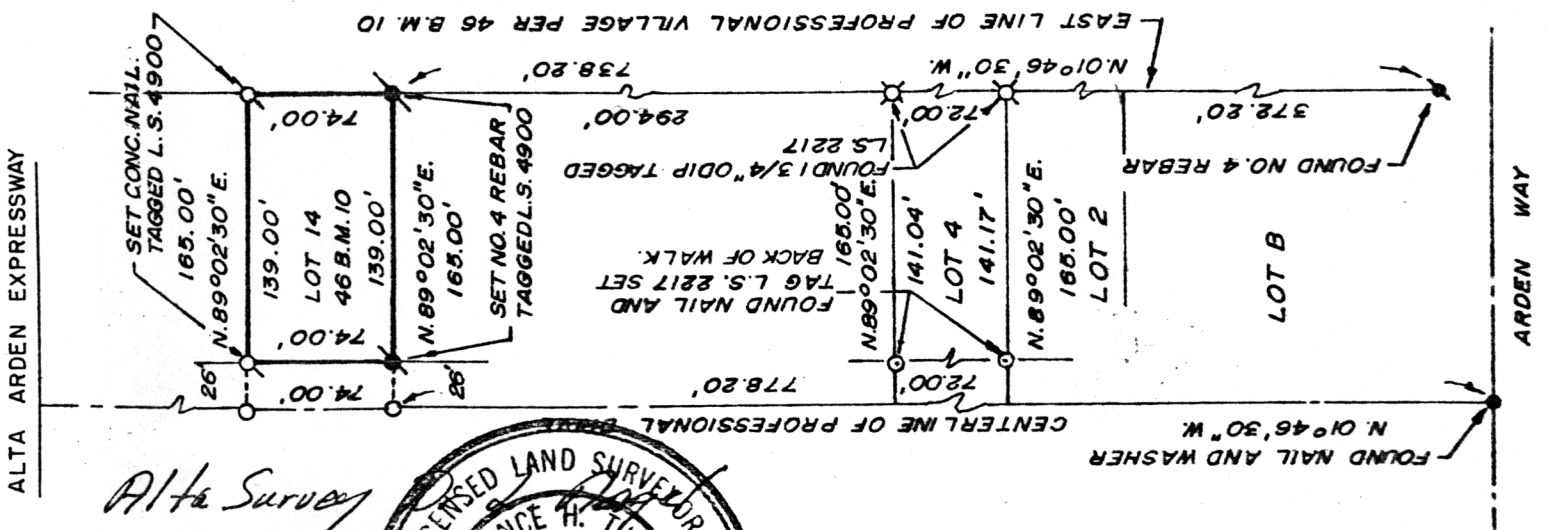
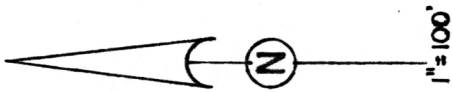
CORNER — LEFT AS FOUND FOUND AND TAGGED REESTABLISHED OBLITERATED CORNER REBUILT

PHYSICAL DESCRIPTION OF CORNER FOUND; EVIDENCE AND METHOD USED TO IDENTIFY OR REESTABLISH

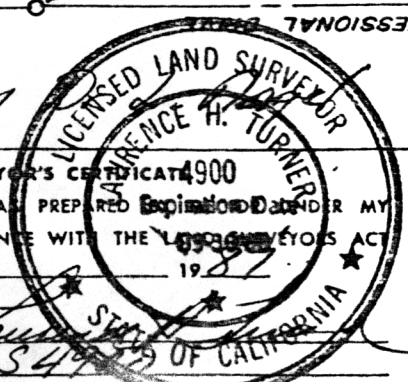
PHYSICAL DESCRIPTION OF MONUMENTS REBUILT OR PERPETUATED

CALIFORNIA COORDINATE SYSTEM ORDER: FIRST SECOND THIRD
 STATIONS USED: NGS (USC & GS) STATE COUNTY OTHER STATION _____ STATION _____
 ZONE _____ ELEVATION _____ NORTHINGS (Y) _____ EASTINGS (X) _____

SKETCH: (Include reference tie or witness points, remarks and topo of area)



Alta Survey



SURVEYOR'S CERTIFICATE 4900
 THIS CORNER RECORD WAS PREPARED AND EXAMINED UNDER MY
 DIRECTION IN CONFORMANCE WITH THE LAND SURVEYORS ACT
 ON Feb 11, 1987
 SIGNED: _____
 L.S. or R.C.E. No.: L.S. 4900

COUNTY SURVEYOR'S CERTIFICATE
 THE CORNER RECORD WAS RECEIVED Feb 19, 1987
 AND EXAMINED AND FILED Feb 24, 1987
 BY: D. PARKER
 TITLE: _____
 DOCUMENT No. 107
 STATEMENT ON BACK OF SHEET