

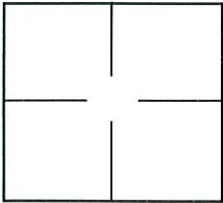
# CORNER RECORD

Document Number 1069  
 County of Sacramento, California

City of Elk Grove  
 Brief Legal Description Centerline North of intersection at Terra Linda Drive and Elk Way - Terra Linda Unit no. 2 (90 BM 21)

### CORNER TYPE

### COORDINATES (Optional)



Government Corner  Control   
 Meander  Property   
 Rancho  Other   
 Date of Survey 9/16/2003

N. \_\_\_\_\_  
 E. \_\_\_\_\_  
 Zone \_\_\_\_\_ NAD27  NAD83   
 NAD83 Epoch \_\_\_\_\_  
 Elev. \_\_\_\_\_  
 Vert. Datum: NGVD29  NADV88   
 Meas. Units: Metric  Imperial

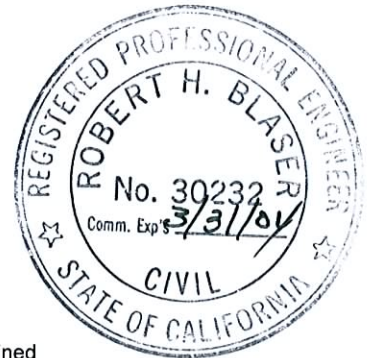
Corner - Left as found  Found and tagged  Established  Reestablished  Rebuilt

Identification and type of corner found: Evidence used to identify or procedure used to establish or reestablish the corner:  
Found 3/4" Iron Pipe, No tag prior to overlay.

A description of the physical condition of the monument as found and as set or reset: Set 3 reference points for found 3/4" Iron Pipe.

### SURVEYOR'S STATEMENT

This Corner Record was prepared by me or under my direction in conformance with the Land Surveyor's Act on Feb. 5, 2004.  
 Signed [Signature] P.L.S. or R.C.E. No.: 30232



### COUNTY SURVEYOR'S STATEMENT

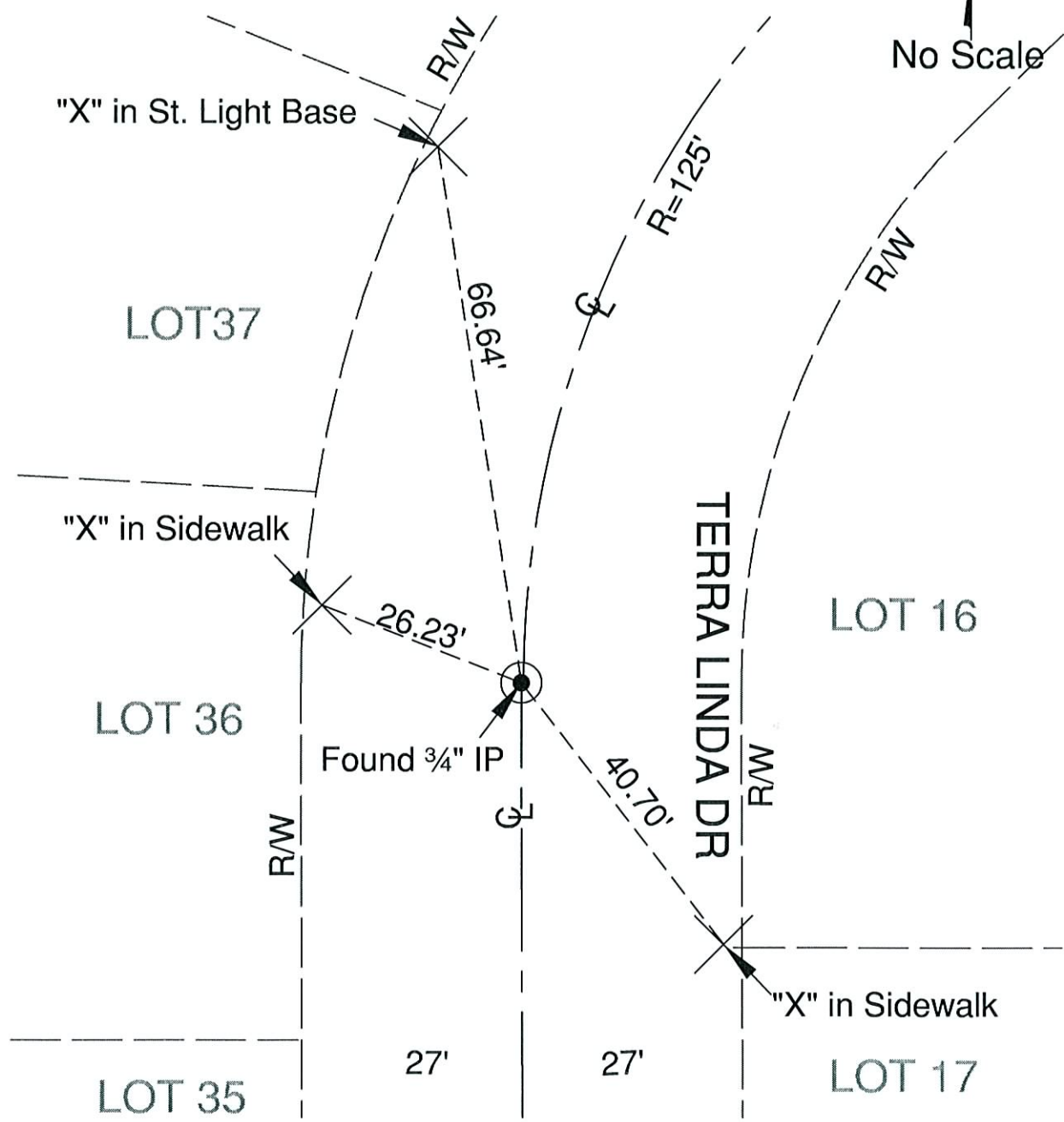
This Corner Record was received 4/7, 2004 and examined and filed 4/9, 2009.  
 Signed [Signature] P.L.S. or R.C.E. No.: LS 7965  
 Title ASSOC. L.S.



County Surveyor's Comment \_\_\_\_\_



No Scale



**LEGEND**

- ⊙ FOUND 3/4" IRON PIPE, NO TAG PER 90 B.M. 21
- ✕ SCRIBED "X" IN CONCRETE AS NOTED