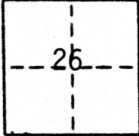


**CORNER RECORD**

COUNTY OF SACRAMENTO T. 10N R. 6E M.D.M. MERIDIAN CALIFORNIA

CORNER TYPE: GOV'T. CORNER  MEANDER  RANCHO  CONTROL  OTHER  PROPERTY CORNER  
 CORNER IDENTIFICATION - DATE OF VISIT DECEMBER 19 86



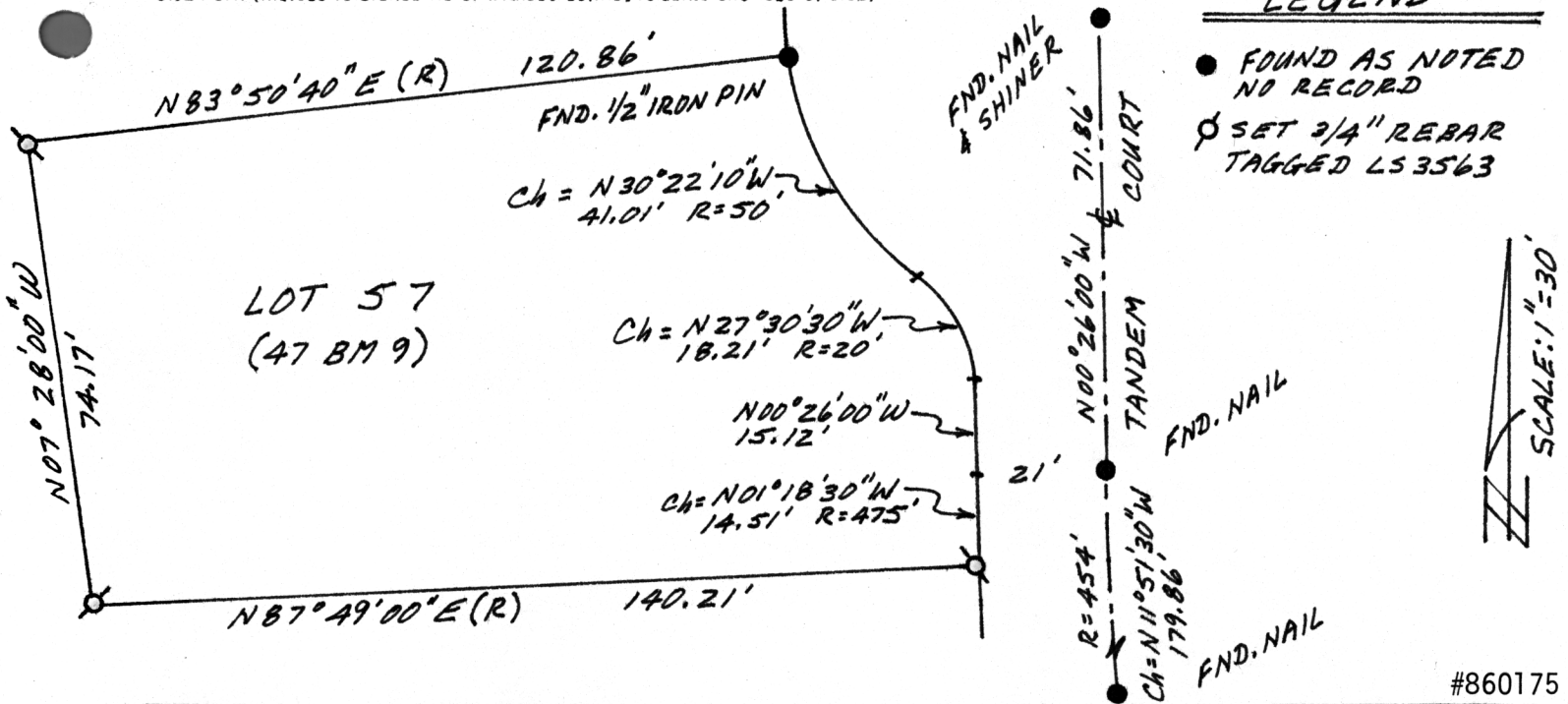
CORNER - LEFT AS FOUND  FOUND AND TAGGED  REESTABLISHED OBLITERATED CORNER  REBUILT

PHYSICAL DESCRIPTION OF CORNER FOUND: EVIDENCE AND METHOD USED TO IDENTIFY OR REESTABLISH \_\_\_\_\_  
 FOUND 1/2" IRON PIN AT NORTHEAST CORNER OF LOT 57.  
 FOUND NAIL AND SHINER AT CENTER OF CUL-DE-SAC.  
 FOUND NAIL AT CENTERLINE BC.  
 FOUND NAIL AT CENTERLINE EC.

PHYSICAL DESCRIPTION OF MONUMENTS REBUILT OR PERPETUATED \_\_\_\_\_  
 SET 3/4" REBAR TAGGED LS3563 AT THE NORTHWEST, SOUTHWEST  
 AND SOUTHEAST CORNERS OF LOT 57 OF SYLVAN PARK NO.2 (47 BM 9).

CALIFORNIA COORDINATE SYSTEM ORDER: FIRST  SECOND  THIRD   
 STATIONS USED: NGS (USC & GS)  STATE  COUNTY  OTHER  STATION \_\_\_\_\_ STATION \_\_\_\_\_  
 ZONE \_\_\_\_\_ ELEVATION \_\_\_\_\_ NORTHINGS (Y) \_\_\_\_\_ EASTINGS (X) \_\_\_\_\_

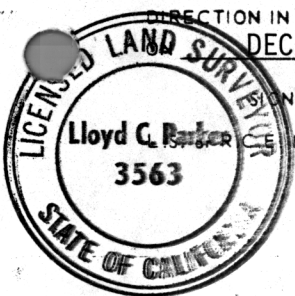
SKETCH: (Include reference tie or witness points, remarks and topo of area)



**SURVEYOR'S CERTIFICATE**

THIS CORNER RECORD WAS PREPARED BY ME OR UNDER MY DIRECTION IN CONFORMANCE WITH THE LAND SURVEYORS ACT  
 DECEMBER 18, 19 86

BY: Lloyd C. Parker  
 No.: LS3563



SEAL

**COUNTY SURVEYOR'S CERTIFICATE**

THIS CORNER RECORD WAS RECEIVED 12/26 19 86  
 AND EXAMINED AND FILED 12/29 19 86

BY: D. PARKER  
 TITLE: Supervising Eng. Tech

DOCUMENT No. 106  
 STATEMENT ON BACK OF SHEET

YES  NO