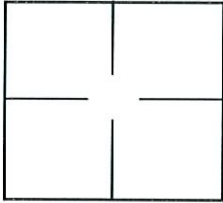


CORNER RECORD

Document Number 1059
 City of Elk Grove County of Sacramento, California
 Brief Legal Description Centerline Northeast of intersection at St. Augustine Drive and South Wales Way -
Plat of Valley Hi Greens (80 BM 26)

CORNER TYPE

COORDINATES (Optional)



Government Corner Control
 Meander Property
 Rancho Other
 Date of Survey 9/16/2003

N. _____
 E. _____
 Zone _____ NAD27 NAD83
 NAD83 Epoch _____
 Elev. _____
 Vert. Datum: NGVD29 NADV88
 Meas. Units: Metric Imperial

Corner - Left as found Found and tagged Established Reestablished Rebuilt

Identification and type of corner found: Evidence used to identify or procedure used to establish or reestablish the corner:
Found 3/4" Iron Pipe, No tag prior to overlay.

A description of the physical condition of the monument as found and as set or reset: Set 3 reference points for found 3/4"
Iron Pipe.

SURVEYOR'S STATEMENT

This Corner Record was prepared by me or under my direction in conformance with the Land Surveyor's Act on Feb. 5, 2004.
 Signed [Signature] P.L.S. or R.C.E. No.: 30232



COUNTY SURVEYOR'S STATEMENT

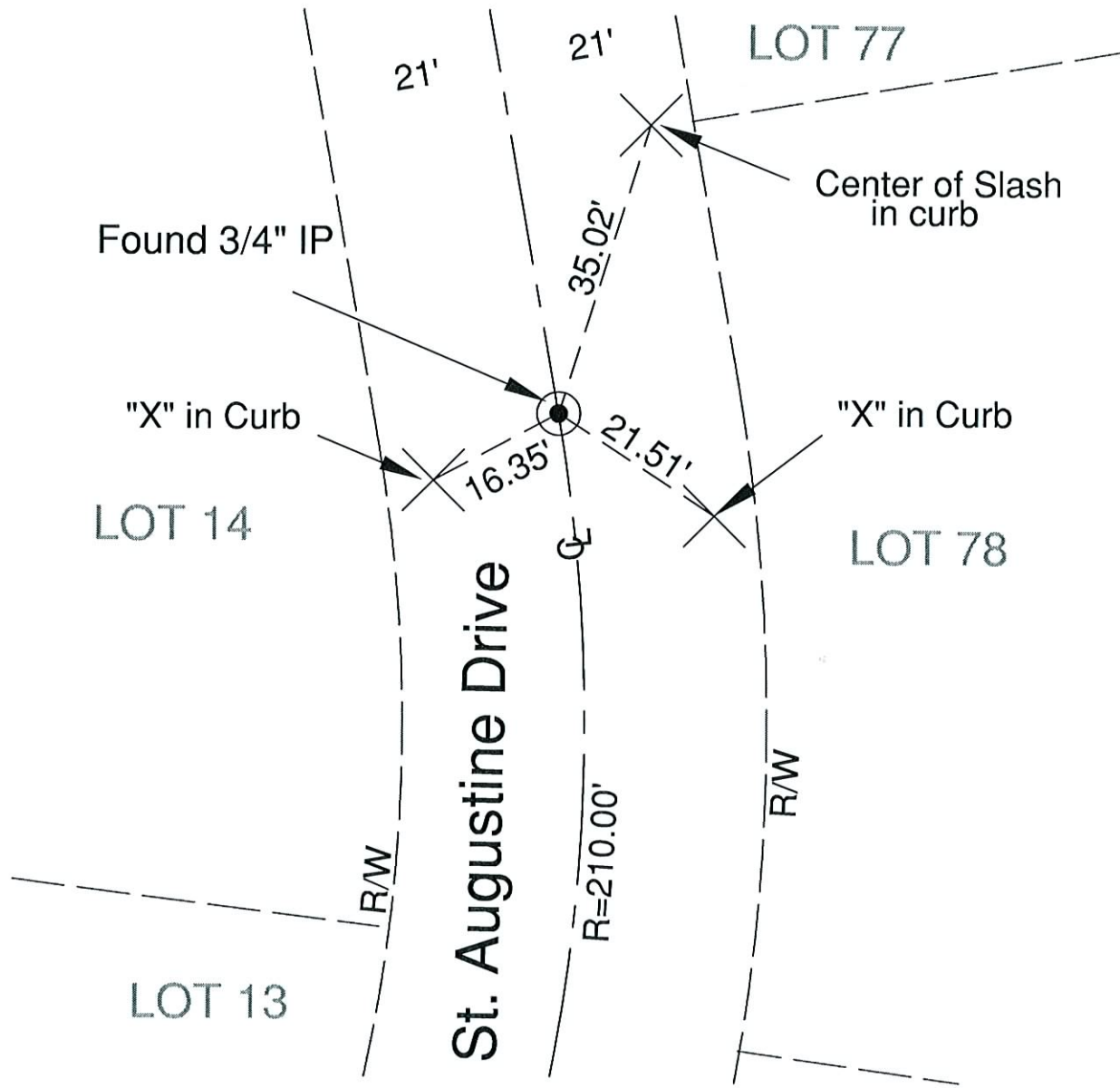
This Corner Record was received 4/7, 2004 and examined
 and filed 11/9, 2009.
 Signed [Signature] P.L.S. or R.C.E. No.: LS 7965
 Title ASSOC. L.S.



County Surveyor's Comment



No Scale



LEGEND

- ⊙ FOUND 3/4" IRON PIPE, NO TAG PER 80 B.M. 26
- ✕ SCRIBED "X" OR SLASH IN CONCRETE AS NOTED