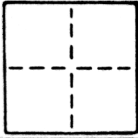


CORNER RECORD

COUNTY OF SACRAMENTO T. 8N R. 5E M.D.M. MERIDIAN CALIFORNIA

CORNER TYPE: GOVT. CORNER MEANDER RANCHO CONTROL OTHER

CORNER IDENTIFICATION - DATE OF VISIT NOV. 19 1986



SW. CORNER & WITNESS CORNER TO THE S.E. CORNER OF LOT 31 WESTERN PACIFIC ADDITION, 11 BM 12.

CORNER - LEFT AS FOUND FOUND AND TAGGED REESTABLISHED OBLITERATED CORNER REBUILT

PHYSICAL DESCRIPTION OF CORNER FOUND; EVIDENCE AND METHOD USED TO IDENTIFY OR REESTABLISH

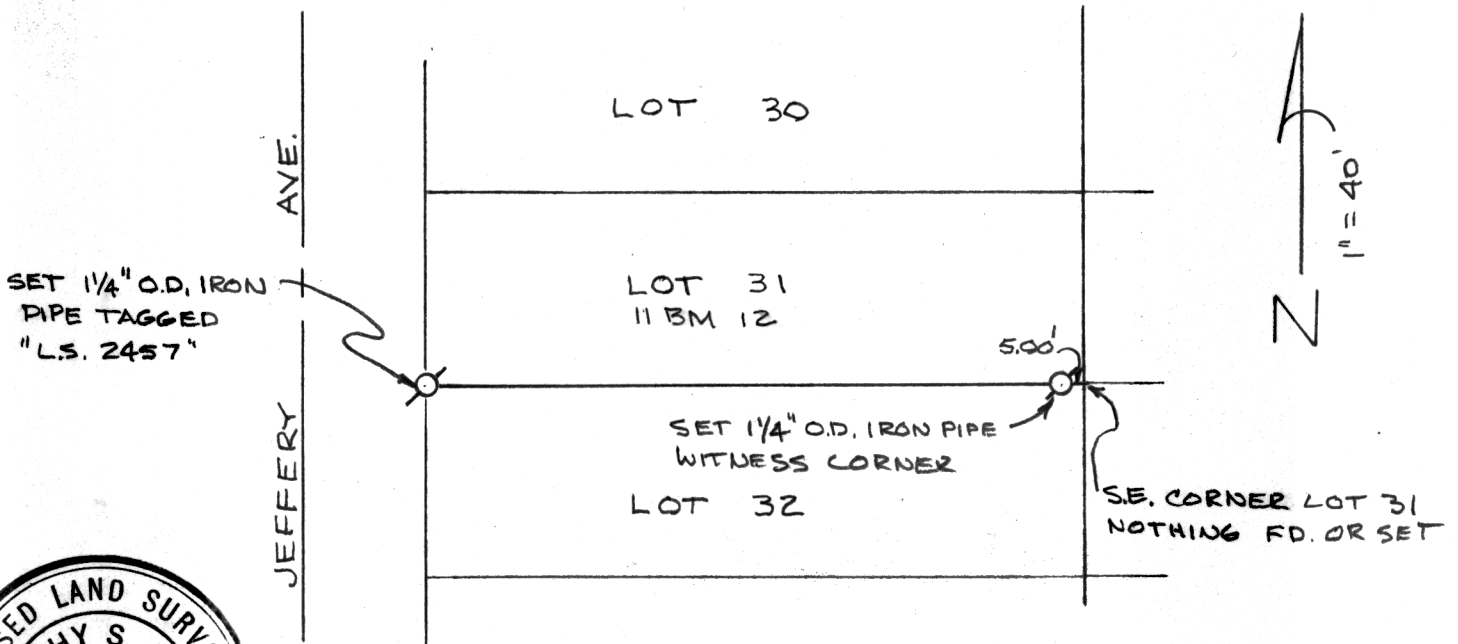
CORNERS ESTABLISHED PER OFFICIAL MAP OF WESTERN PACIFIC ADDITION, STREET IMPROVEMENTS, AND FOUND CHISELED CROSSES IN SIDEWALKS.

PHYSICAL DESCRIPTION OF MONUMENTS REBUILT OR PERPETUATED

SET 1 1/4" O.D. IRON PIPE MONUMENTS AS NOTED IN SKETCH.

CALIFORNIA COORDINATE SYSTEM ORDER: FIRST SECOND THIRD
 STATIONS USED: NGS (USC & GS) STATE COUNTY OTHER STATION _____ STATION _____
 ZONE _____ ELEVATION _____ NORTHINGS (Y) _____ EASTINGS (X) _____

SKETCH: (Include reference tie or witness points, remarks and topo of area)



SURVEYOR'S CERTIFICATE
 THIS CORNER RECORD WAS PREPARED BY ME OR UNDER MY DIRECTION IN CONFORMANCE WITH THE LAND SURVEYORS ACT NOVEMBER 19, 1986

SIGNED: Timothy S. Trainor
 L.S. or R.C.E. No.: LS2457

SEAL

COUNTY SURVEYOR'S CERTIFICATE
 THE CORNER RECORD WAS RECEIVED NOV. 25 1986 AND EXAMINED AND FILED DEC 19 1986
 BY: D. PARKER
 TITLE: SUPERVISING ENG TECH

DOCUMENT No. 103

STATEMENT ON BACK OF SHEET

YES NO