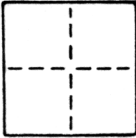


CORNER RECORD

COUNTY OF SACRAMENTO T. _____ R. _____ MERIDIAN _____ CALIFORNIA

CORNER TYPE: GOVT. CORNER MEANDER RANCHO CONTROL OTHER
 CORNER IDENTIFICATION - DATE OF VISIT JUNE 1986



WITNESS POINTS FOR SW CORNER LOT 45 &
 SE CORNER LOT 44, WEST CURTIS OAKS
 BOOK 10 OF MAPS, MAP NO. 48

CORNER - LEFT AS FOUND FOUND AND TAGGED REESTABLISHED OBLITERATED CORNER REBUILT

PHYSICAL DESCRIPTION OF CORNER FOUND; EVIDENCE AND METHOD USED TO IDENTIFY OR REESTABLISH

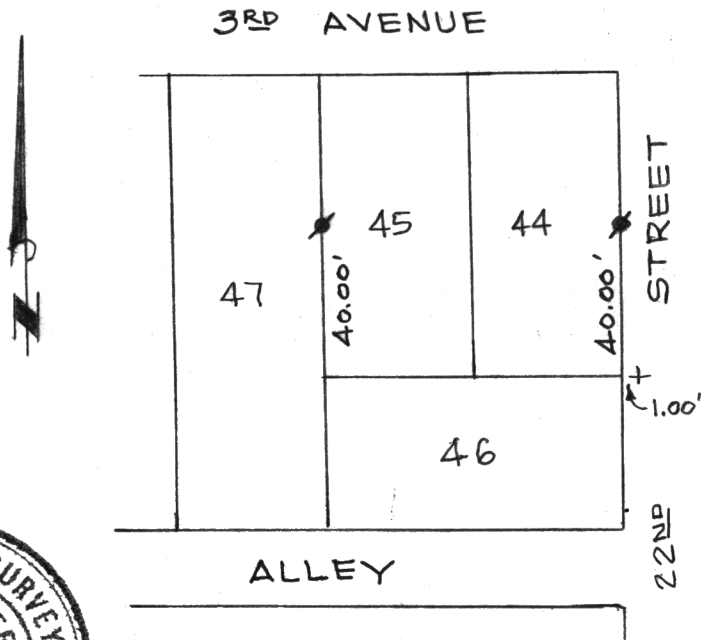
CORNERS ESTABLISHED PER PLAT OF
 WEST CURTIS OAKS

PHYSICAL DESCRIPTION OF MONUMENTS REBUILT OR PERPETUATED

SEE SKETCH

CALIFORNIA COORDINATE SYSTEM ORDER: FIRST SECOND THIRD
 STATIONS USED: NGS (USC & GS) STATE COUNTY OTHER STATION _____ STATION _____
 ZONE _____ ELEVATION _____ NORTHINGS (Y) _____ EASTINGS (X) _____

SKETCH: (Include reference tie or witness points, remarks and topo of area)



SET 1 1/4" O.D. IRON PIPE TAGGED
 LS 2457 FOR WITNESS POINT.
 + CUT CROSS IN SIDEWALK
 FOR WITNESS POINT.



SURVEYOR'S CERTIFICATE

THIS CORNER RECORD WAS PREPARED BY ME OR UNDER MY
 DIRECTION IN CONFORMANCE WITH THE LAND SURVEYORS ACT
SEPTEMBER 23 1986

SIGNED: Timothy S. Trainor
 L.S. or R.C.E. No.: LS 2457

SEAL

COUNTY SURVEYOR'S CERTIFICATE

THE CORNER RECORD WAS RECEIVED NOV 25 1986
 AND EXAMINED AND FILED Dec 17 1986

BY: D. Parker
 TITLE: Superisingy Eng. Tech

DOCUMENT No. 102

STATEMENT ON BACK OF SHEET

YES NO