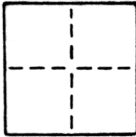


CORNER RECORD

COUNTY OF SACRAMENTO T. \_\_\_\_\_ R. \_\_\_\_\_ MERIDIAN \_\_\_\_\_ CALIFORNIA

CORNER TYPE: GOV'T. CORNER  MEANDER  RANCHO  CONTROL  OTHER

CORNER IDENTIFICATION — DATE OF VISIT SEPTEMBER 1986



N. E. CORNER & S. E. CORNER OF LOT 10,  
SWANSTON PALMS UNIT NO. 2  
BOOK 21 OF MAPS, MAP NO. 35

CORNER — LEFT AS FOUND  FOUND AND TAGGED  REESTABLISHED OBLITERATED CORNER  REBUILT

PHYSICAL DESCRIPTION OF CORNER FOUND; EVIDENCE AND METHOD USED TO IDENTIFY OR REESTABLISH

CORNERS REESTABLISHED PER MAP OF SWANSTON  
PALMS UNIT NO. 2.

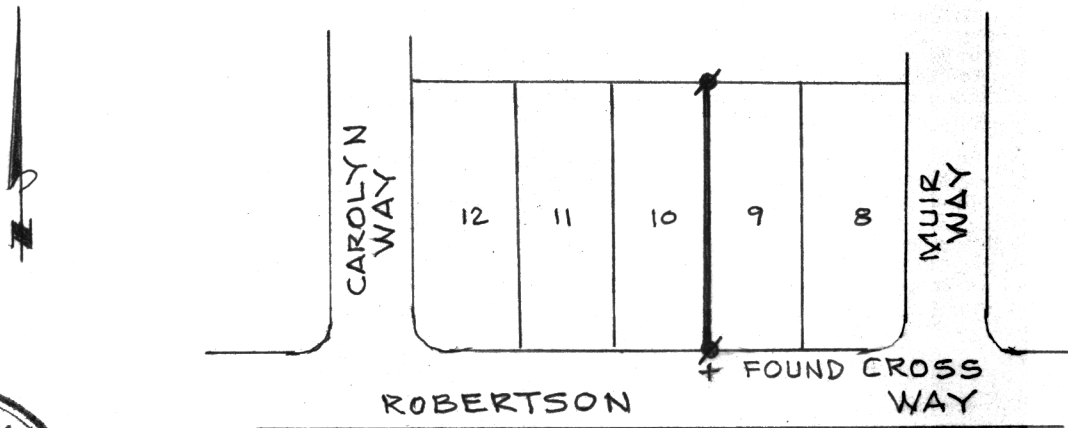
PHYSICAL DESCRIPTION OF MONUMENTS REBUILT OR PERPETUATED

SEE SKETCH

CALIFORNIA COORDINATE SYSTEM ORDER: FIRST  SECOND  THIRD   
STATIONS USED: NGS (USC & GS)  STATE  COUNTY  OTHER  STATION \_\_\_\_\_ STATION \_\_\_\_\_  
ZONE \_\_\_\_\_ ELEVATION \_\_\_\_\_ NORTHINGS (Y) \_\_\_\_\_ EASTINGS (X) \_\_\_\_\_

SKETCH: (Include reference tie or witness points, remarks and topo of area)

SET 1/4" O.D. IRON PIPE TAGGED LS 2457



SURVEYOR'S CERTIFICATE

THIS CORNER RECORD WAS PREPARED BY ME OR UNDER MY  
DIRECTION IN CONFORMANCE WITH THE LAND SURVEYORS ACT  
SEPTEMBER 19, 1986

SIGNED: Timothy S. Traub  
L.S. or R.C.E. No.: LS 2457

SEAL

COUNTY SURVEYOR'S CERTIFICATE

THE CORNER RECORD WAS RECEIVED NOV 25, 1986  
AND EXAMINED AND FILED DEC 19, 1986

BY: D. PARKER  
TITLE: SUPERVISING ENG. TECH

DOCUMENT No. 101

STATEMENT ON BACK OF SHEET

YES  NO