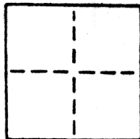


CORNER RECORD

COUNTY OF SACRAMENTO T. _____ R. _____ MERIDIAN CALIFORNIA
CORNER TYPE: GOVT. CORNER MEANDER RANCHO CONTROL OTHER
CORNER IDENTIFICATION - DATE OF VISIT OCTOBER 1981



SUB. SEC 28 RDP

CORNER - LEFT AS FOUND FOUND AND TAGGED REESTABLISHED OBLITERATED CORNER REBUILT

PHYSICAL DESCRIPTION OF CORNER FOUND; EVIDENCE AND METHOD USED TO IDENTIFY OR REESTABLISH
SEE THE ATTACHED MAP. NOTE USE BAR SCALE WHEN MEASURING DISTANCES

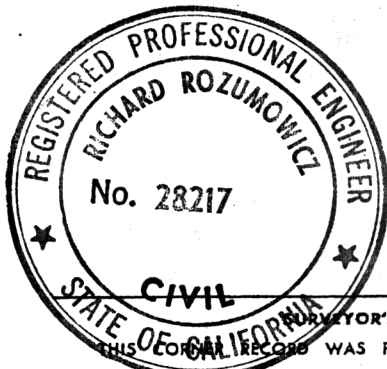
PHYSICAL DESCRIPTION OF MONUMENTS REBUILT OR PERPETUATED

SEE THE ATTACHED MAP.

CALIFORNIA COORDINATE SYSTEM ORDER: FIRST SECOND THIRD
STATIONS USED: NGS (USC & GS) STATE COUNTY OTHER STATION _____ STATION _____
ZONE _____ ELEVATION _____ NORTHINGS (Y) _____ EASTINGS (X) _____

SKETCH: (Include reference tie or witness points, remarks and topo of area)

SEE THE ATTACHED MAP. NOTE, USE BAR SCALE WHEN MEASURING DISTANCES.



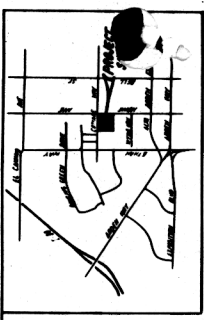
COUNTY SURVEYOR'S CERTIFICATE
THIS CORNER RECORD WAS PREPARED BY ME OR UNDER MY DIRECTION IN CONFORMANCE WITH THE LAND SURVEYORS ACT ON APRIL 4 1983
SIGNED: Richard Rozumowicz
L.S. or R.C.E. No.: 28217

SEAL

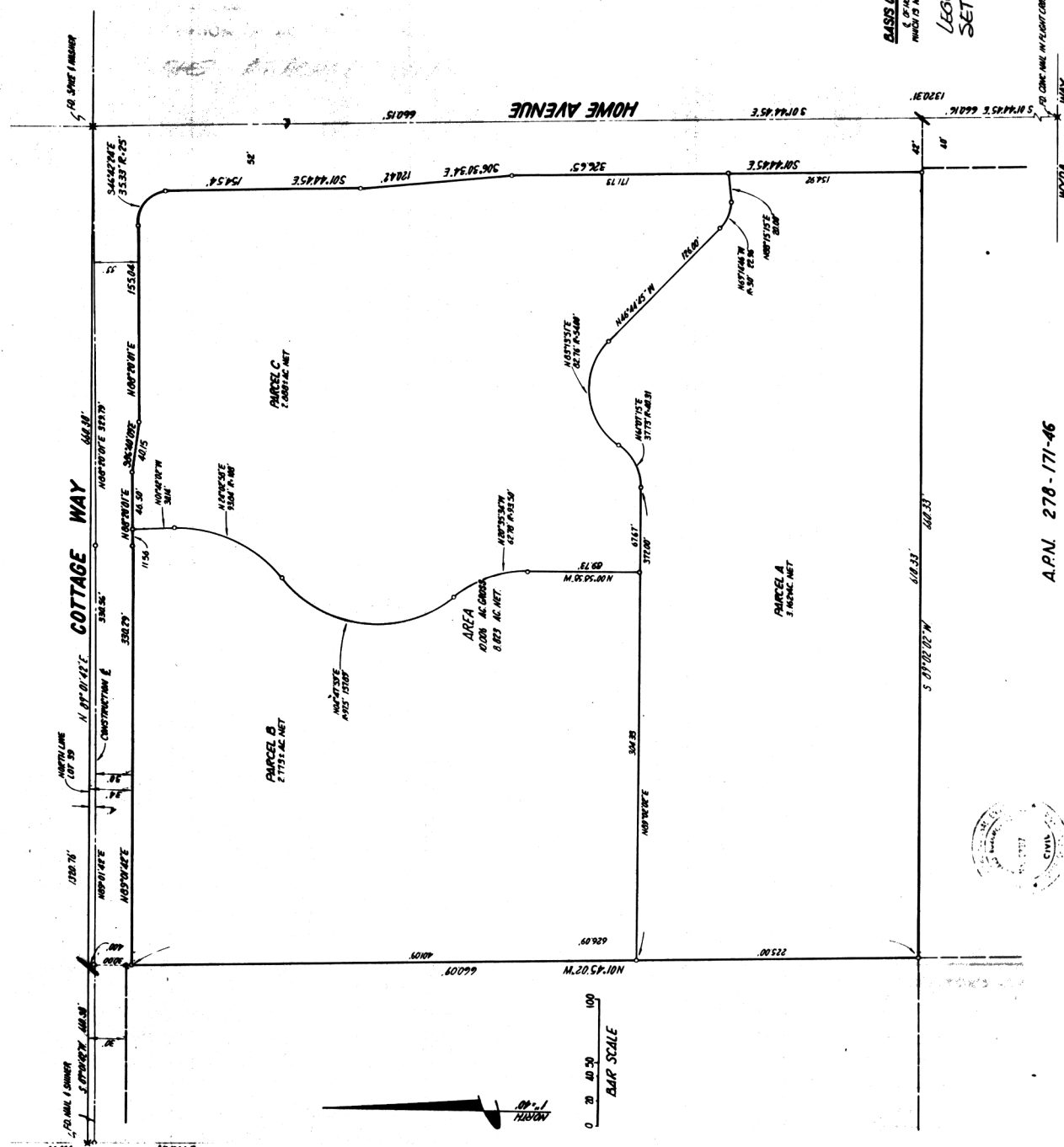
COUNTY SURVEYOR'S CERTIFICATE
THE CORNER RECORD WAS RECEIVED April 4 1983 AND EXAMINED AND FILED April 4 1983.
BY: [Signature]
TITLE: Engineering Engineering Tech
DOCUMENT No. 10

STATEMENT ON BACK OF SHEET

YES NO



VICINITY MAP



LEGEND:
SET 1/2" REBAR

LEGEND:
SET 1/2" REBAR

NO. 20 OF THE RANCHO DEL PASO PER 14 BM 9

A.P.N. 278-171-46

BENCHMARK BM 17, 220 ELEVATION 471.9 LOCATED AT THE BASE OF THE SIGNAL LIGHT AT THE SW CORNER OF INTX. OF COTTAGE WAY/ HOWE AVE.	DESIGNED BY: DRAFTED BY: CHECKED BY:	COUNTY OF SACRAMENTO, CALIFORNIA	SPEATH ENGINEERING Civil Engineers 5710 Garland Ave. Suite 'B' Sacramento, CA 95841 (916) 334-8008	NO.	DESCRIPTION	COUNTY	SECTION	DATE	SCALE	JOB NO.
				REVISIONS	NO.	DATE	SCALE	JOB NO.		
									HORIZ. 1"=40'	87-89
									VERT. 1"=40'	SHEET
									DATE: 08/17/01	1 OF 1